

EcoCart Series

Mobile Powered Workstations



Boost your Dock to Stock Metrics with the EcoCart
www.newcastlesys.com/ecocart

EcoCart Workstations

The entry-level EcoCart mobile powered workstation is designed to provide true mobility within a facility, while eliminating unnecessary movement, touches and transportation wastes. This can result in improved dock to stock cycle times in receiving and on-time shipments in your shipping areas.

This lightweight, compact unit is ideal for powering a laptop, barcode printer and scanner for 8+ hours at time. At the end of use, simply plug your cart into a standard wall outlet to recharge.

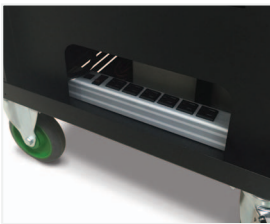
Benefits Include:

- Reduce labor by as much as \$10K per worker
- Increase receipts by as much as 60%
- Reduce improperly labeled products
- Reduce inaccurate inventories
- Process goods directly at the pallet or on the dock
- See your ROI in less than three months

A number of optional accessories are available and can be easily integrated in seconds for a highly versatile workstation.



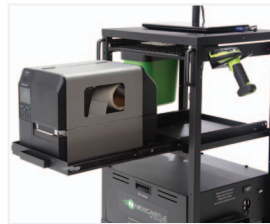
Shown with optional accessories



Easy-access power strip



Integrated push handles for easy maneuverability



Optional slide-out keyboard tray, printer tray and scanner holder

All EcoCart Series Mobile Powered Workstations listed below come standard with (one) top shelf, 5" locking casters, push handles, integrated power system and power strip.

Technical Specifications

Height Adjustable:	Middle shelf adjustable from 20-32" (508-813 mm)	
Shelf:	(1 standard top shelf) 21.75" wide x 20" deep metal (552 x 508 mm) (optional middle shelf) 20" wide x 20" deep metal (508 x 508 mm)	
Capacity:	60 lbs (27 kg) per shelf evenly distributed	
Casters:	5 x 2" (127 x 51 mm) rubber wheels, front fixed, rear locking swivel	
Color & Construction:	Black powder coat & steel	
Battery Type:	Sealed lead acid	
Model Configurations:	EC350	EC380
Typical Devices Powered for 8 Hour Shift:	Laptop/thin client, small thermal printer & scanner	Laptop/thin client, LCD, small or mid-range thermal printer & scanner
Continuous Output Power (W):	450	450
Surge Power:	900	900
Battery Bank (Wh):	480	1200
Charge Time (Hrs):	4	9
Operating Temp (F):	32-95°	
Weight:	110 lbs. (50 kg)	140 lbs. (64 kg)
Dimensions:	20" long x 21.75" wide x 43" high (508 x 552 x 1092 mm)	