

Quick Printing Guide (for BarTender)

M00081400

Rev.A

Trademarks

EPSON is a registered trademark of Seiko Epson Corporation.

Exceed Your Vision and ESC/POS are registered trademarks or trademarks of Seiko Epson Corporation.

BarTender[®] is registered trademark of Seagull Scientific, Inc. in the United States and other countries.

Seagull Scientific is trademark of Seagull Scientific, Inc. in the United States and other countries.

In this manual, the BarTender[®] GUI is used with the permission of Seagull Scientific, Inc.

© Seiko Epson Corporation 2014. All rights reserved.

This document contains information necessary for printing on the TM-C3500 using BarTender 10.1 Professional ("BarTender") of Seagull Scientific, Inc.

This is described with the following premise. Change the settings according to your environment.

- Media Type: Matte Label (Roll Paper)
- Label Size: 72 x 51 mm (Die-cut Label)
- Printed Information:



Install BarTender in advance while referring to the BarTender manual.

See the BarTender manual for how to install and operate BarTender.

See the TM-C3500 Technical Reference Guide for details on how to use the printer and printer driver.

Caution:

The usage may differ when printing with an application other than BarTender or a different version or edition of BarTender.

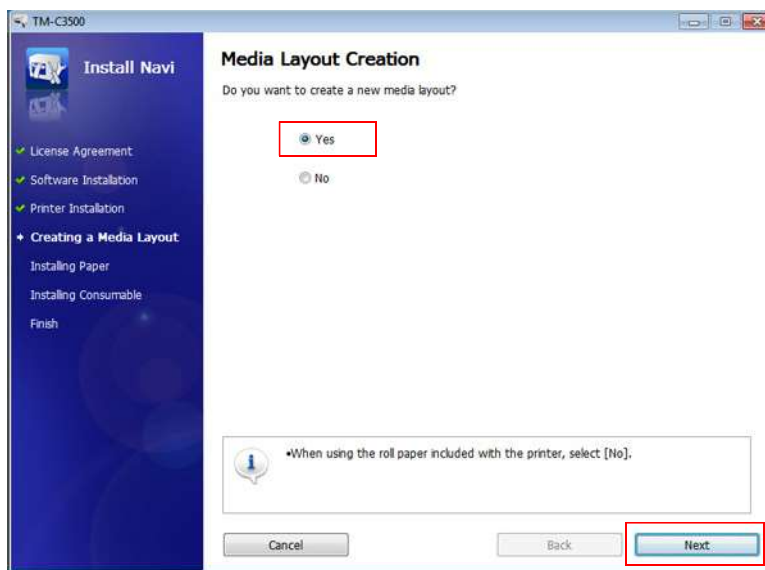
Preparation of the Printer

- 1 Insert the supplied CD into the computer, and set up the printer according to the setup tool instructions.

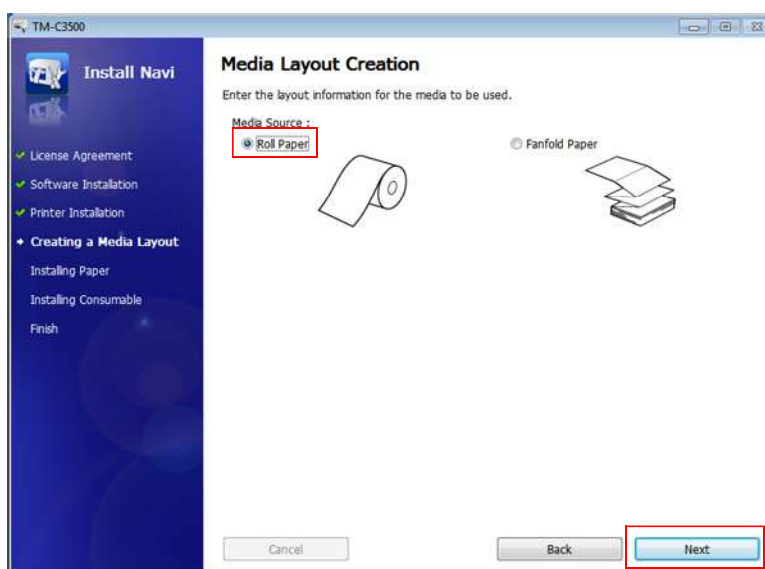
Note:

The printer driver is installed automatically at the same time.

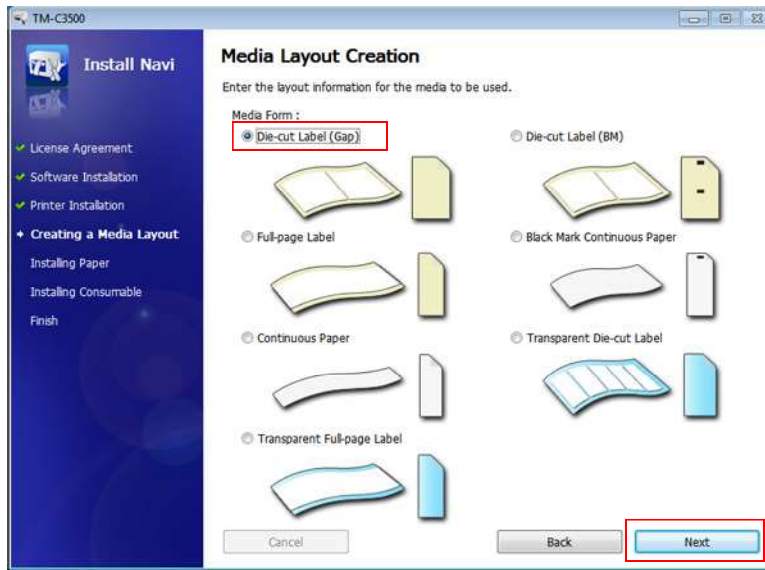
- 2 "Media Layout Creation" Dialog appears. Select (Yes), then click (Next).



- 3 Specify the feed method of the paper to be used. Select (Roll Paper), then click (Next).

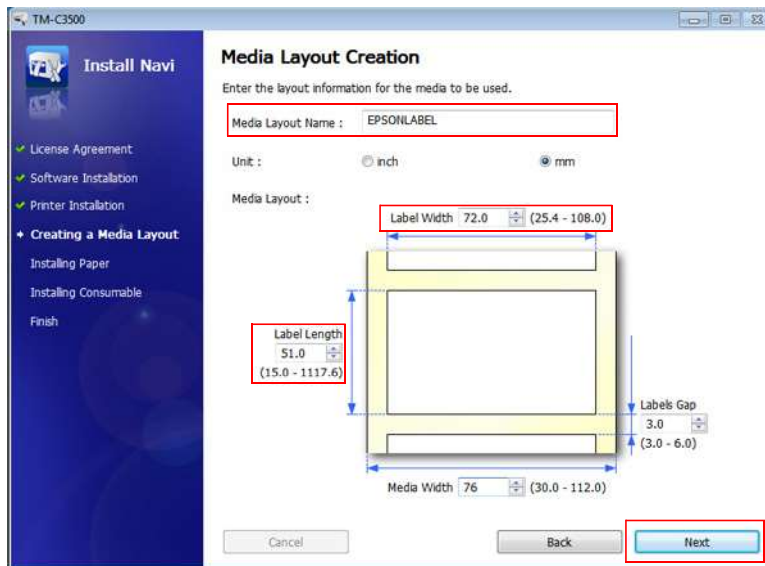


4 Specify the media form to be used. Select (Die-cut Label (Gap)), then click (Next).



5 Specify the size of the paper to be used, as shown below. Then click (Next).

Setting Items	Setting Value
Media Layout Name	EPSONLABEL (Optional)
Label Width	72 mm
Label Length	51 mm



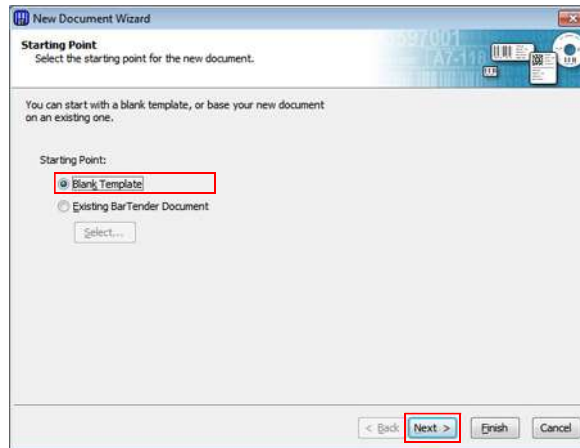
Note:

When using multiple layouts with different paper sizes, register the multiple media layouts to be used on the printer driver.

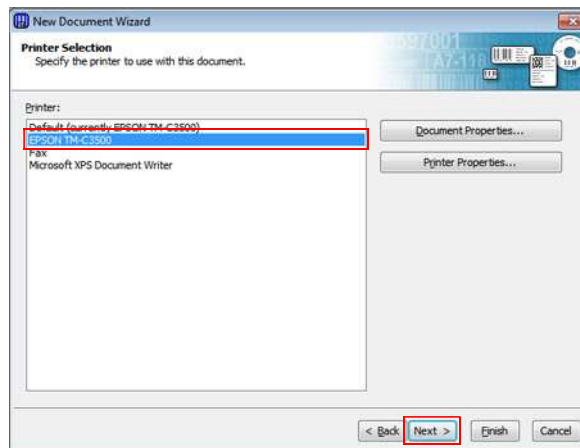
6 After specifying the default print settings, set up the printer by following the instructions of the setup tool.

Preparation of BarTender

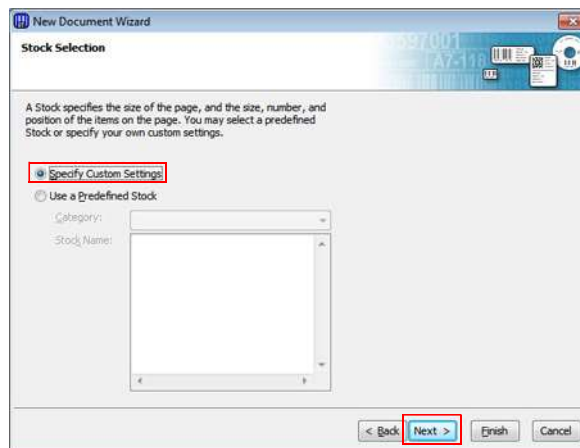
- 1 Start BarTender, and create a new document.
- 2 Set the Starting Point. Select (Blank Template) , then click (Next).



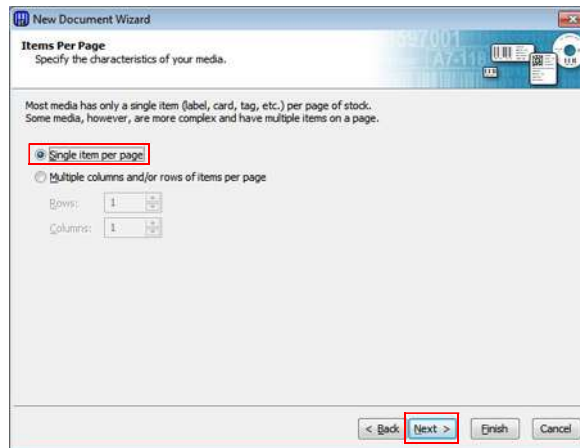
- 3 Select the printer. Select "EPSON TM-C3500", then click (Next).



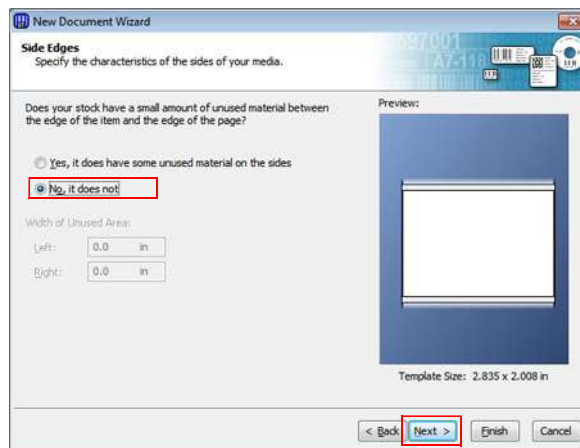
- 4 Select the Stock. Select (Specify Custom Settings), then click (Next).



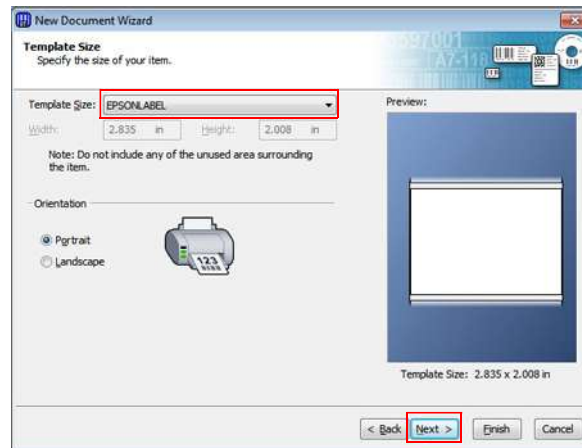
5 Set the Items Per Page. Select (Single item per page), then click (Next).



6 Specify the amount of unused material for Side Edges. Select (No, it does not), then click (Next).



- 7 Set the Template Size. Select (EPSONLABEL) (name of media layout created when setting up the printer), and click (Next).

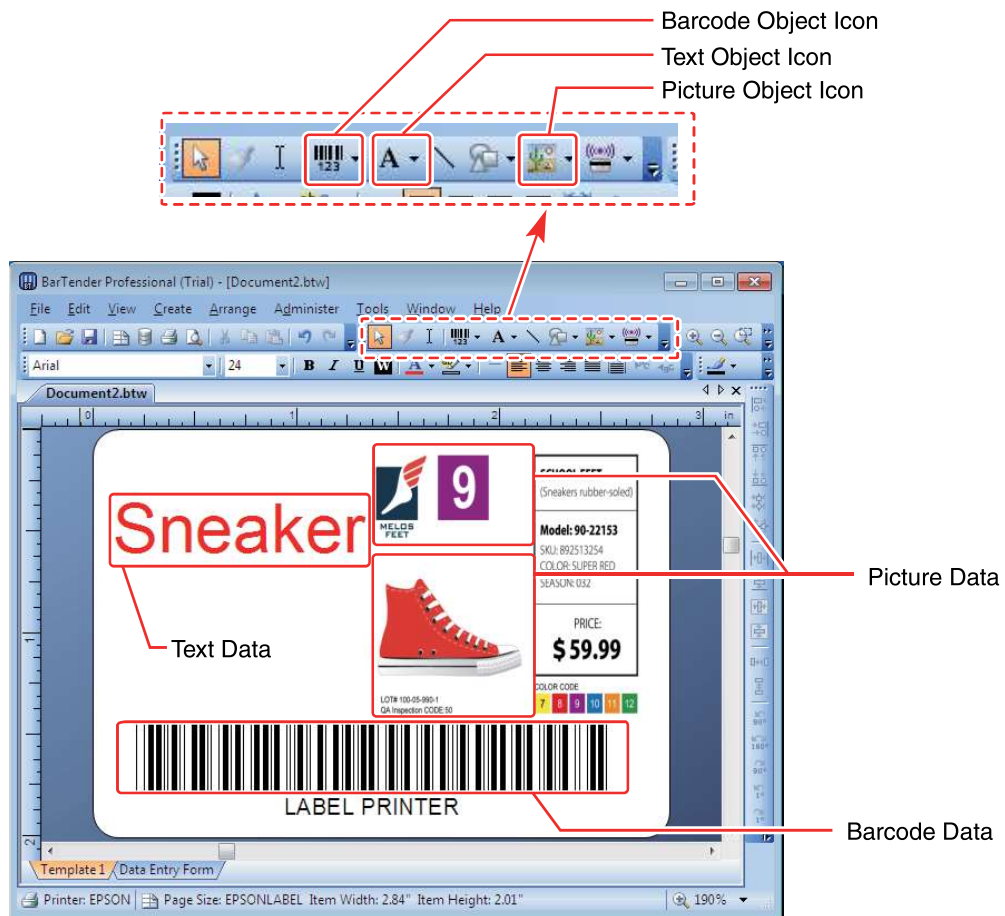


Note:

To directly specify the width and height, select [User Defined Size] from Template Size.

- 8 Follow the wizard instructions to create a document.

Creating Label Design, and Printing



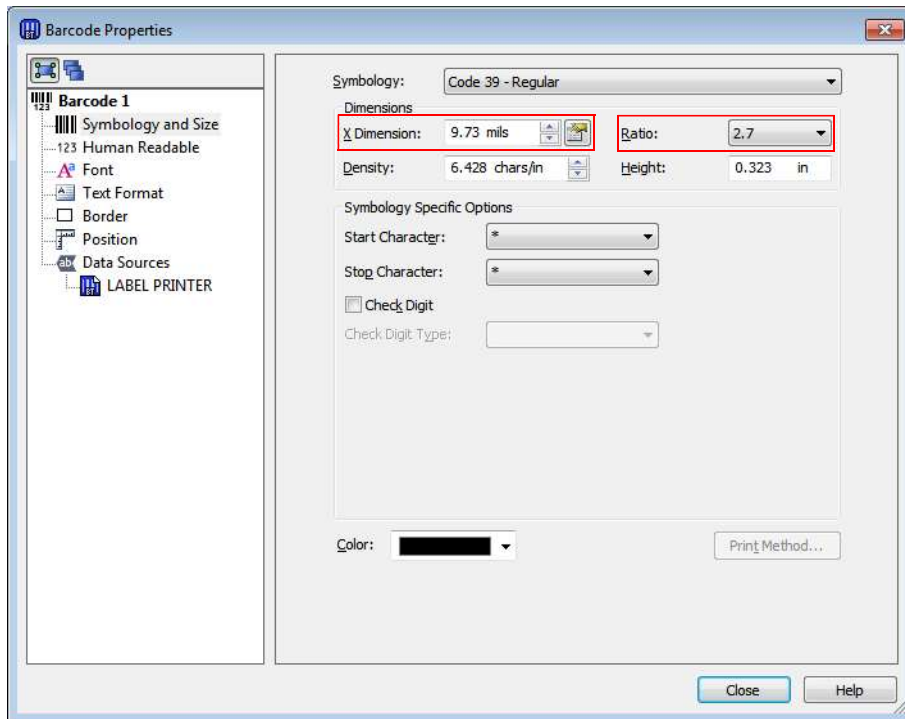
- Use the Text Object Icon to insert Text Data.
- Use the Picture Object Icon to insert Picture Data.
- Use the Barcode Object Icon to insert Barcode Data.

Caution:

Be sure to provide a margin of at least 1.5 mm on all sides of the printed data.

Barcode Settings

In Barcode Properties, specify (9.73 mils) for X Dimension and (2.7) for Ratio.

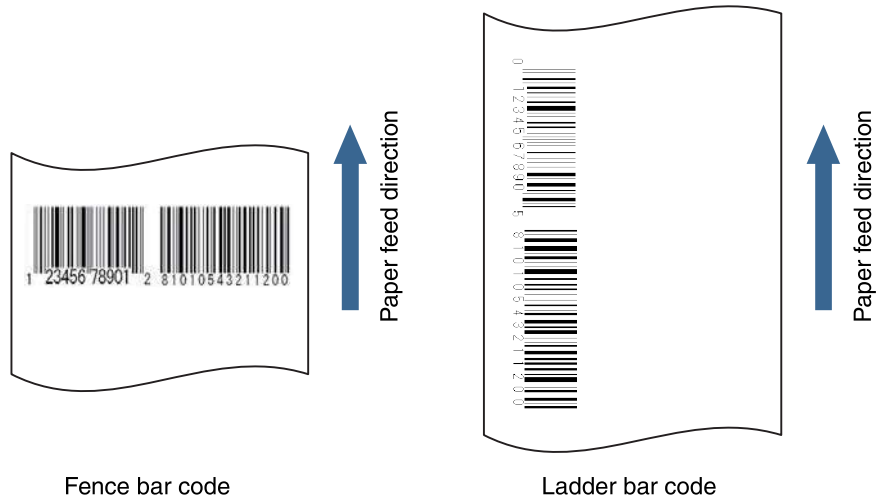


Note:

When printing a barcode with the TM-C3500, there are recommended conditions according to the paper type. If the recommended conditions are not followed, the printed barcode may not be read properly. For the recommended conditions, see the appendix.

Appendix

Recommended conditions of the Barcode



Barcode Direction	Printer Driver settings	BarTender settings		Note
	Paper type	X Dimension	Ratio	
Fence	Plain, Plain Label	12.50	2.5	-
	Other than above	9.73	2.7	-
Ladder	Plain, Plain Label	18.06	2.5	-
	Wristband	12.50	2.5	Use "Codabar"
		15.28	2.5	Use "Code128"
Other than above	18.06	2.5	-	

Cautions:

The above values are valid when using paper recommended by EPSON. Before using the barcode, print the barcode and check the scan quality. For the scan quality of printing using the barcode function of BarTender, contact Seagull Scientific, Inc.

Barcode font Function of the Printer Driver

You can use the barcode font function of the printer driver to print high scan quality barcodes. Use the following method.

- 1** Register the barcode font on the printer driver.
- 2** Replace the registered barcode font on the printer driver with a TrueType font.
- 3** In BarTender, use the replaced font to enter the barcode value as a text object.

Note:

It is not displayed as a barcode image on BarTender.

To preview the barcode, use the preview function of the printer driver.



**INTEGRATED
PRODUCTIVITY
SYSTEMS**

