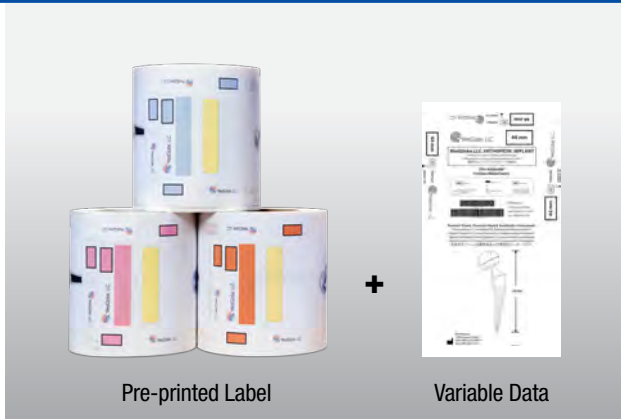




### Why Be Content With This...

Complex Two-Step Printing



Pre-printed Label

Variable Data

- Costly pre-printing required
- High minimum order quantities
- Possible misalignment during printing
- Potential inventory challenges and label waste

### When You Can Have This...

Simple On-Demand Color Printing



Hi-Res Color and Variable Data Printed in One-Step

- Color and variable data printed in one-step
- Print what you need when you need it
- One-step print process eliminates misalignment
- Greatly minimize inventory and label waste

**ColorWorks®** | **On-Demand Color Label Printers**

To learn more, go to [epson.com/colorworks](https://www.epson.com/colorworks)



PRECISIONCORE  
PRINTHEAD

SIMPLE ♦ SMART ♦ CLEAN

## Powered by PrecisionCore®

Advanced printing technology that is simple, smart and clean.

- Simplified for reliable performance
- Highly scalable design enables superior image quality
- Heat-Free technology supports low power consumption

Learn more at [Epson.com/precisioncore](http://Epson.com/precisioncore)



## Designed for Ease Of Use

- Hassle free—no ribbons or thermal printheads to replace
- Easy thermal replacement—native ZPL II®, Windows®, Mac®, SAP®, Linux®
- Powerful remote management utility



### C4000

Low- to Mid-Volume  
Auto Cutter



### C6000A/P

Mid- to High-Volume  
Auto Cutter / Peeler



### C6500A/P

Mid- to High-Volume  
Auto Cutter / Peeler



### C7500

High-Volume  
Batch Printing

**MSRP**

**\$2,199**

**\$2,699/\$2,999**

**\$3,499/\$3,799**

**\$8,499**

**Max. Print Speed (Inches per Second)**

4.0<sup>1</sup>

5.0<sup>2</sup>

5.0<sup>2</sup>

11.8<sup>3</sup>

**Max. Print Resolution (dpi)**

1200 x 1200

1200 x 1200

1200 x 1200

1200 x 600

**Max. Print Width (Inches)**

4.25

4.25

8.34

4.25

**Printer Languages**

ESC/Label®, ZPL II

ESC/Label, ZPL II

ESC/Label, ZPL II

ESC/Label, ZPL II

**Compatibility**

Windows, Mac,  
SAP, Linux

Windows, Mac,  
SAP, Linux

Windows, Mac,  
SAP, Linux

Windows

**Ink Cartridge Capacity (Per Cartridge)**

50mL

80mL

80mL

340mL

**Internal Roll Outer Diameter/  
Estimate Roll Length\***

4"/105'

8"/510'

6"/250'

8"/510'

**Printer Dimensions (W x D x H)**

12.2" x 11.1" x 11.2"

13.4" x 22.2" x 12.8"

17.5" x 20.3" x 12.8"

15.4" x 23.5" x 15.5"

\*May vary by media type



## Epson Preferred<sup>SM</sup> Plus Extended Service Plans

### We've Got You Covered

- Return for Repair—plans and standalone services available
- Spare-in-the-Air™ (SITA)—Next-Business-Day<sup>4</sup> Whole Unit Exchange
- Next-Business-Day On-Site Repair Service<sup>5</sup> includes a next-business-day on-site<sup>5</sup> visit

Get more information [here](#).

To learn more, go to [epson.com/colorworks](http://epson.com/colorworks)

Contact your Epson® sales or service representative today.

Contact:

Epson America, Inc.  
3131 Katella Ave., Los Alamitos, CA 90720

Epson Canada Limited  
185 Renfrew Dr., Markham, Ontario L3R 6G3

[www.epson.com](http://www.epson.com)  
[www.epson.ca](http://www.epson.ca)

<sup>1</sup> Printing in Max. Speed Mode, 300 x 600 dpi resolution, 4" (101.6 mm) print width. Print speeds are based on the print engine speed only. Total throughput time for any label depends on factors including label size, file size, print resolution, speed of data transmission, etc. | <sup>2</sup> Printing in Max. Speed Mode, 300 x 600 dpi, 3.6" (92 mm) print width. | <sup>3</sup> Printing in full 1200 x 600 resolution with Flush-onto-Paper Mode enabled. With Flush-onto-Paper Mode disabled, print speed is up to 10.4" per second. | <sup>4</sup> Expedited shipping not available in all areas. Orders placed and processed by 1 p.m. Pacific Time for Next-Business-Day delivery. See limited warranty or service plan for details. | <sup>5</sup> Geographic limitations may apply. Service request must be received and processed by 1 p.m. Pacific Time, Monday through Friday, excluding holidays.

Pricing and product specifications subject to change without notice. EPSON, ColorWorks, ESC/Label and PrecisionCore are registered trademarks and the EPSON logo is a registered logomark of Seiko Epson Corporation. Spare-in-the-Air is a trademark and Epson Preferred is a service mark of Epson America, Inc. Mac is a trademark of Apple Inc., registered in the U.S. and other countries. Windows is either a registered trademark or trademark of Microsoft Corporation in the United States and other countries. All other product and brand names are trademarks and/or registered trademarks of their respective companies. Epson disclaims any and all rights in these marks. Copyright 2023 Epson America, Inc. CPD-62479 6/23

Click here for more information!



INTEGRATED  
PRODUCTIVITY  
SYSTEMS

(844) 477-4911 | [www.ipsiscan.com](http://www.ipsiscan.com)