

Click here for more information!



IPSi

**INTEGRATED
PRODUCTIVITY
SYSTEMS**

Honeywell

THE POWER OF **CONNECTED**

(844) 477-4911 | www.ipsiscan.com

Xenon™ XP 1950g

Corded Area-Imaging Scanner

Quick Start Guide

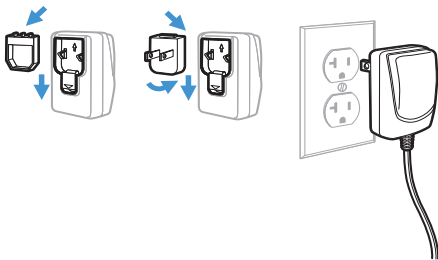
Agency Model: 1950

Note: Refer to your User Guide for information about cleaning your device.

Get Started

Turn off computer's power before connecting the scanner, then power up the computer once the scanner is fully connected.

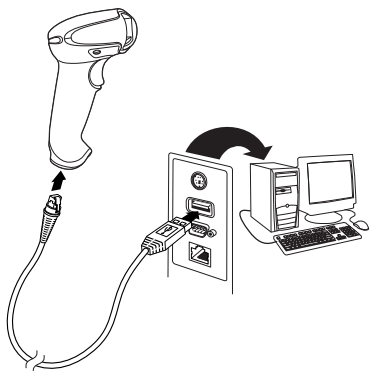
Power Supply Assembly (if included)



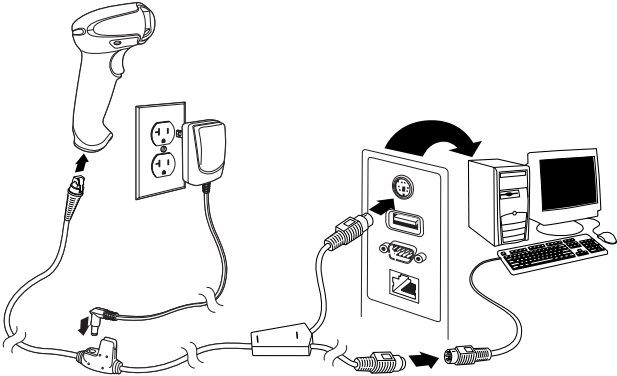
Note: The power supply must be ordered separately, if needed.

Connect the Scanner

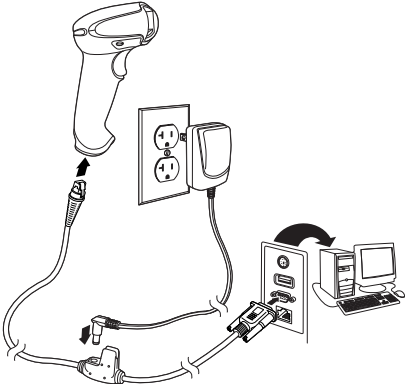
USB:



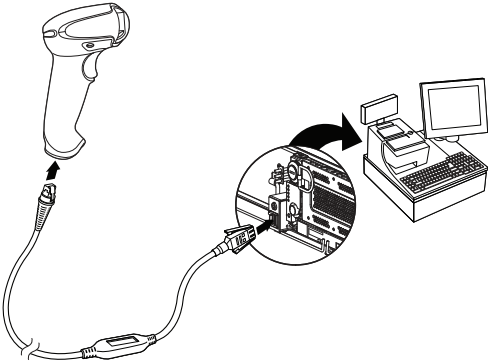
Keyboard Wedge:



RS232 Serial Port:



RS485:



Reading Techniques

The view finder projects an aiming beam that should be centered over the bar code, but it can be positioned in any direction for a good read.



Standard Product Defaults

The following bar code resets all standard product default settings.



Standard Product Defaults

RS485 Interface

The RS485 interface defaults to port 5B. If you have an IBM POS terminal using port 9B, scan the appropriate code below to program the terminal, then power cycle the cash register.



IBM Port 9B HHBCR-1
Interface



IBM Port 9B HHBCR-2
Interface

Note: For additional RS485 interface selections, see the *User Guide* for your product.

USB Serial

Scan the following code to program the scanner to emulate a regular RS232-based COM Port. If you are using a Microsoft® Windows® PC, you will need to download a driver from the Honeywell website (www.honeywellaidc.com). The driver will use the next available COM Port number. Apple® Macintosh computers recognize the scanner as a USB CDC class device and automatically use a class driver.



USB Serial

Note: *No extra configuration (e.g., baud rate) is necessary.*

USB PC Keyboard

Scan the following code to program the scanner for a USB PC Keyboard.



USB PC Keyboard

Keyboard Country

Scan the appropriate country code below to program the keyboard layout for your country or language. By default, national character replacements are used for the following characters: # \$ @ [\] ^ _ { } ~ Refer to the ISO 646 Character Replacements chart in your User Guide to view the character replacements for each

country.



USA (Default)



Denmark



France



Great Britain



Norway



Belgium



Finland



Germany/Austria



Italy



Spain



Switzerland

Note: For a complete list of country codes, see the User Guide for your product.

Trigger

The following bar codes will allow you to use the scanner in **Manual Trigger - Normal Mode** (need to press the trigger to read) or **Presentation mode** (the scanner is activated when it “sees” a bar code).



Manual Trigger - Normal
(Default)



Presentation Mode

Streaming Presentation™

When in Streaming Presentation mode, the scanner leaves the scan illumination on all the time and continuously searches for bar codes.



Streaming Presentation Mode

Suffix

If you want a carriage return after the bar code, scan the **Add CR Suffix** bar code. To add a tab after the bar code, scan the **Add Tab Suffix** bar code. Otherwise, scan the **Remove Suffix** bar code to remove the suffixes.



Add CR Suffix



Add Tab Suffix



Remove Suffix

Add Code ID Prefix to all Symbologies

Scan the following bar code if you wish to add a Code ID prefix to all symbologies at once.



Add Code ID Prefix To All Symbologies
(Temporary)

Note: For a complete list of Code IDs, see the User Guide for your product.

Function Code Transmit

When this selection is enabled and function codes are contained within the scanned data, the scanner transmits the function code to the terminal. Charts of these function codes are provided in your User Guide. When the scanner is in keyboard wedge mode, the scan code is converted to a key code before it is transmitted.



Enable
(Default)



Disable

EZConfig-Scanning

To access additional features for the scanner, use EZConfig-Scanning, an online configuration software tool, available from our website.

Support

To search our knowledge base for a solution or to log into the Technical Support portal and report a problem, go to www.hsmcontactsupport.com.

Product Documentation

Product documentation is available at www.honeywellaidc.com.

Limited Warranty

For warranty information, go to www.honeywellaidc.com and click **Get Resources > Product Warranty**.

Patents

For patent information, see www.hsmpats.com.

Disclaimer

Honeywell International Inc. (“HII”) reserves the right to make changes in specifications and other information contained in this document without prior notice, and the reader should in all cases consult HII to determine whether any such changes have been made. The information in this publication does not represent a commitment on the part of HII.

HII shall not be liable for technical or editorial errors or omissions contained herein; nor for incidental or consequential damages resulting from the furnishing, performance, or use of this material. HII disclaims all responsibility for the selection and use of software and/or hardware to achieve intended results.

This document contains proprietary information that is protected by copyright. All rights are reserved. No part of this document may be photocopied, reproduced, or translated into another language without the prior written consent of HII.

Copyright © 2019 Honeywell International Inc. All rights reserved.