

Click here for more information!



IPSi

**INTEGRATED
PRODUCTIVITY
SYSTEMS**

(844) 477-4911 | www.ipsiscan.com

PRINTRONIX®

AUTO ID

Online Data Validator 2D User's Manual



ODV2D for T8000 and T6000e Printers

TSC Printronix Auto ID Technology, Inc. makes no representations or warranties of any kind regarding this material, including, but not limited to, implied warranties of merchantability and fitness for a particular purpose. Printronix Auto ID Technology, Inc. shall not be held responsible for errors contained herein or any omissions from this material or for any damages, whether direct, indirect, incidental or consequential, in connection with the furnishing, distribution, performance or use of this material. The information in this manual is subject to change without notice.

This document contains proprietary information protected by copyright. No part of this document may be reproduced, copied, translated or incorporated in any other material in any form or by any means, whether manual, graphic, electronic, mechanical or otherwise, without the prior written consent of Printronix Auto ID Technology, Inc.

COPYRIGHT © 2022 TSC PRINTRONIX AUTO ID, INC. All rights reserved.

Trademark Acknowledgements

ODV2D, T6000e and T8000 are trademarks of TSC Printronix Auto ID Technology, Inc.

Communication Notices

This equipment has been tested and found to comply with the limits for a Class A digital device, pursuant to Part 15 of the FCC Rules. These limits are designed to provide reasonable protection against harmful interference in a residential installation. This equipment generates, uses, and can radiate radio frequency energy and, if not installed and used in accordance with the instructions, may cause harmful interference to radio communications. However, there is no guarantee that interference will not occur in an installation. If this equipment does cause harmful interference to radio or television reception, which can be determined by turning the equipment off and on, the user is encouraged to try to correct the interference by one or more of the following measures:

- Reorient or relocate the receiving antenna.
- Increase the separation between the equipment and receiver.
- Connect the equipment into an outlet on a circuit different from that to which the receiver is connected.
- Consult the dealer or an experienced radio/TV technician for help.

Unauthorized changes or modifications could void the user's authority to operate the equipment.

This device complies with part 15 of the FCC Rules. Operation is subject to the following two conditions: (1) this device may not cause harmful interference, and (2) this device must accept any interference received, including interference that may cause undesired operation.

Any change or modification to this product voids the user's authority to operate it per FCC Part 15 Subpart A Section 15.21 regulations.

Canada

This Class A digital apparatus complies with Canadian ICES-003 and RSS 210.

Cet appareil numérique de la classe A est conforme à la norme NMB-003 du Canada.

Operation is subject to the following two conditions: (1) this device may not cause interference, and (2) this device must accept any interference, including interference that may cause undesired operation of the device.

CE Notice (European Union)

Marking by the CE symbol indicates compliance of this Printronix system to the EMC Directive and the Low Voltage Directive of the European Union. Such marking is indicative that this Printronix system meets the following technical standards:

- EN 55022 — “Limits and Methods of Measurement of Radio Interference Characteristics of Information Technology Equipment.”
- EN 55024 — “Electromagnetic Immunity Requirements for Information Technology Equipment”
- EN 60950 — “Safety of Information Technology Equipment.”

Printronix Auto ID Technology, Inc. cannot accept responsibility for any failure to satisfy the protection requirements resulting from a non-recommended modification of the product, including the fitting of non-Printronix option cards.

This product has been tested and found to comply with the limits of Class A Information Technology Equipment according to European standard EN 55022. The limits for Class A equipment were derived for commercial and industrial environments to provide reasonable protection against interference with licensed communication devices.

WARNING

This is a Class A product. In a domestic environment, this product may cause radio interference in which case the user may be required to take adequate measures.

CE Symbol



Taiwan

經型式認證合格之低功率射頻電機，非經許可，公司、商號或使用者均不得擅自變更頻率、加大功率或變更原設計之特性及功能。

低功率射頻電機之使用不得影響飛航安全及干擾合法通信；經發現有干擾現象時，應立即停用，並改善至無干擾時方得繼續使用。前項合法通信，指依電信法規定作業之無線電通信。低功率射頻電機須忍受合法通信或工業、科學及醫療用電波輻射性電機設備之干擾。

Compliance Statements

The TSC Printronix Auto ID Online Data Validator 2D gathers data per the ISO/ANSI method of verification to perform practically all the industry standard bar code quality parameter calculations. These include all ISO/ANSI method parameters for 1-D and 2-D barcodes along with decoding the symbol.

Reflectance Compliance – 660 nm Wavelength (Red) Light

The reflectance values embedded in the calibration symbol supplied with each ODV2D are measured using a calibrated ISO compliant verifier.

ISO/ANSI Method Compliance

The Printronix ODV2D gathers data and performs all ISO/ANSI method parameter calculations per the ISO/IEC 15416 (1-D) and ISO/IEC 15415 (2-D), and ANSI X3.182-1990 methodologies with a few special considerations and exceptions. The ODV2D also conforms to ISO/IEC 15426-1 and 15426-2 per the requirements specified in Section 2 of both documents, with some exceptions.

The exceptions and considerations are related to the instrument's design and mission. The design incorporates a proprietary image scanner that has been assembled with a fixed focal length to produce a calibrated dot resolution for measuring 10mil or larger minimum X-dimensions. Further, the measurement accuracy of some grading parameters may be lower than identified in the standard.

The mission is to not only analyze bar code quality, but also to detect any printer failures, process failures or media problems. For maximum performance and to conform to quality specifications, a fixed mounting distance and angle are required.

An image scan resolution that can detect errors of the particular print method is highly recommended. The scan resolution used may or may not correspond to the recommendations in various specifications that it be related to the X dimension of a particular symbol, but instead correspond to the printer's resolution or some other parameter(s) critical in the application. A major philosophy of an on-line verification system is; if the printer and/or process is operating correctly and the media has proper reflectance properties, the best print quality for that particular print method and material is achieved by definition.



Special Considerations

1. Final system tests are performed at the proper focus distance and at an angle of 27 degrees. Units with common focus distances are checked to yield analysis results within 10% of the ISO verifier accuracy requirements.
2. All ODV2D's use the same light source with a wavelength of 624 +/- 10 nm. Therefore, any ISO/ANSI overall symbol grade calculated by an ODV includes 624 as the wavelength portion of the grade.

Exceptions to the ISO/ANSI Method

The Defects calculation does not include the quiet zone area. A separate quiet zone check is implemented to more easily isolate print problems vs. setup problems in an on-line environment.

Table of Contents

| | |
|---|----|
| Communication Notices | 2 |
| Compliance Statements | 4 |
| 1 ODV2D Usage | 10 |
| Overview | 10 |
| Capability Highlights..... | 10 |
| Supported Barcodes..... | 11 |
| Operational Parameters | 11 |
| Alignment and Calibration | 12 |
| Purposes of Calibration | 12 |
| Enable the ODV2D..... | 12 |
| Enabling and Disabling..... | 12 |
| 2 Operation | 14 |
| ODV2D Menu Overview  | 14 |
| Configuring  the ODV2D | 15 |
| Validator Reporting..... | 16 |
| Requesting a Validator Report..... | 16 |
| Defining the Output Destination (Telemetry Path)..... | 16 |
| Sending Validation Data (Return Data)..... | 16 |
| Resetting ODV2D Data..... | 16 |
| Control Submenu | 17 |
| Validator Active..... | 17 |
| Auto Report | 18 |
| Auto Report Time..... | 18 |
| Telemetry Path | 19 |
| Return Data | 19 |
| Telemetry Data | 20 |
| Validator Action (Error Action) | 20 |
| Stop | 21 |
| Overstrike | 22 |
| Overstrike One..... | 22 |
| Retry Form..... | 22 |

| | |
|-------------------------------|----|
| Stop & Retry | 22 |
| Grade&Report..... | 23 |
| Rescan Form | 23 |
| Rescan&Retry..... | 23 |
| Rescan&Stop..... | 24 |
| Quiet Zones | 25 |
| Skip Labels | 25 |
| Overstrike Style | 25 |
| Num Retry | 26 |
| Max Retry Action | 26 |
| Label Save..... | 26 |
| Comm Error | 27 |
| Comm Timeout | 27 |
| Symbology Submenu | 27 |
| Orientation | 27 |
| Graphics Search | 28 |
| Code 39..... | 28 |
| Code 128 | 28 |
| Interleaved 2/5..... | 28 |
| Code 93..... | 29 |
| Codabar..... | 29 |
| UPC/EAN..... | 29 |
| PDF417 | 29 |
| Data Matrix | 29 |
| QR Code..... | 30 |
| Grading Submenu | 30 |
| Grading Mode..... | 30 |
| Overall Grade | 31 |
| Data Verify..... | 31 |
| Decodability | 32 |
| Percent Decode | 32 |
| Defects | 32 |
| Modulation | 33 |
| EC Min..... | 33 |
| RMin | 33 |
| Symbol Contrast | 34 |
| Fixed Pattern Damage..... | 35 |
| Axial Non-Uniformity | 35 |
| Grid Non-Uniformity | 35 |
| Unused Error Correction | 36 |
| Codeword Yield | 36 |
| Global Threshold | 36 |
| Calibrate Submenu..... | 37 |

| | |
|--|-----------|
| Print Bullseye..... | 37 |
| Alignment Check..... | 37 |
| White Gain Calibration..... | 38 |
| Reflectance Calibration..... | 38 |
| Grading Check..... | 39 |
| Bullseye Height..... | 40 |
| Bullseye Center Row..... | 41 |
| Bullseye Slope..... | 41 |
| Bullseye Tilt..... | 41 |
| Analog Camera Gain..... | 41 |
| Last Alignment Date..... | 41 |
| Last White Gain Date..... | 41 |
| Last Reflectance Date..... | 41 |
| Diagnostics Submenu..... | 42 |
| Scan Report..... | 42 |
| Scan Profile..... | 43 |
| Profile Horiz Mag..... | 44 |
| Print Settings..... | 44 |
| Graphics Info..... | 45 |
| Statistics Submenu..... | 45 |
| Clear Data..... | 45 |
| Good Barcodes..... | 46 |
| Good Forms..... | 47 |
| Overstrike Forms..... | 47 |
| Average BWD..... | 47 |
| Last BWD..... | 47 |
| Validator F/W..... | 47 |
| Serial Number..... | 47 |
| IP Address..... | 47 |
| MAC Address..... | 47 |
| Setup Considerations..... | 48 |
| Note on Energy Star..... | 48 |
| Print Speed Limits..... | 48 |
| Page Size and Barcode Limits..... | 48 |
| Minimum Code Height..... | 48 |
| Data Matrix Complexity..... | 48 |
| On-Demand Printing..... | 49 |
| Checking the Firmware Revision Number..... | 49 |
| PTX_SETUP Control..... | 50 |
| Grading Parameters..... | 52 |
| Grading A-F..... | 52 |

| | |
|---|-----------|
| ISO versus Non-ISO..... | 52 |
| Parameter Applicability..... | 52 |
| Bar Code Failures | 54 |
| Process for 1-D Barcode Analysis | 54 |
| Bad Bar Code Error Detection..... | 55 |
| Missing Bar Code Error Detection | 55 |
| 3 Troubleshooting..... | 56 |
| Validation Demo Page..... | 56 |
| Error Messages..... | 56 |
| 4 Maintenance | 65 |
| Software License Agreement | 66 |
| Definitions..... | 66 |
| License..... | 66 |
| Limited Software Product Warranty..... | 66 |
| Remedy | 67 |
| Disclaimer of Warranties and Limitation of Remedies | 67 |
| Termination of License Agreement | 67 |
| U.S. Government Restricted Rights | 67 |
| Acknowledgement of Terms and Conditions | 67 |
| Open Source Acknowledgements | 68 |
| Linux..... | 68 |
| Linux Boot Loader..... | 68 |
| Aptina Video Driver Module | 69 |
| Busybox..... | 69 |
| GNU C Libraries | 69 |
| OpenCV3..... | 69 |
| ZXing Barcode Reader | 69 |
| Mongoose Web Server | 70 |
| Additional Open Source Components..... | 71 |
| Open Source Licenses | 72 |
| GPL 2.0..... | 72 |
| GPL 3.0..... | 75 |
| LGPL 3.0..... | 82 |
| Apache 2.0..... | 84 |
| BSD | 86 |
| Printronix Auto ID Customer Support Center | 88 |
| Corporate Offices | 89 |

1 *ODV2D Usage*

Overview

If the ODV2D was shipped attached to the printer, the alignment and calibration can be checked before use following the Grading Submenu procedures starting on page 37 of this manual.

If the ODV2D was received unattached, the installation and initial alignment and calibration of the ODV2D must only be performed by trained service personnel. Contact your equipment provider or Printronix Auto ID Service Representative for more information about the initial setup.

The online data verifier/validator (ODV2D) is a precise measurement device for use with the T8000 4-inch and 6-inch and T6000e 4-inch printers. Once properly installed, it will perform well in even harsh environments with reasonable care. The ODV2D for one and two-dimensional barcodes is a fully integrated bar code camera scanning device mounted to the printer above the paper exit. When activated, it records the image of the printed output looking for bar codes in any right-angle orientation (0°, 90°, 180°, 270°). When it finds a bar code, it determines what type of bar code, confirms the data encoded, and provides the ISO grading, performing both functions of validation and verification.

As the label passes under the camera, the ODV2D grades the bar code, confirms the data printed matches the data sent* and sends a report to the printer. The printer response is determined by the ODV2D settings, explained in “Configuring the ODV2D”.

*If the barcode is sent as a bitmap, pdf, or other static image file, the data cannot be matched.

| | Certification Model Numbers |
|---------------|---|
| T6000e series | PTXTHM104, T60004e, SI400,SI400R, L0064R, YQ004, YQ004R, T62R4e, T63R4e, T66R4e, T6204e, T6304e, T6604e |
| T8000 series | PTXTHH104, PTXTHH106 |

Capability Highlights

The ODV2D system is a camera-based system with red LEDs that flash at a given frequency to illuminate the surface of the label as it exits the printer. A sensor is used to record slices of the image as the output moves past the lens and then stitches them together for analysis. Thus, the entire image is recorded by the ODV2D for analysis which allows verification of 1-D barcodes in ladder and picket fence orientations and 2-D barcode grading.

The summary of capabilities are as follows:

- The ODV2D supports all orientations of barcodes (0°, 90°, 180°, 270° degrees).
- The ODV2D supports full ISO-based grading for PDF417, DataMatrix, and QR symbologies.
- Barcodes printed as graphics (Win Drivers, WYSIWIG label programs) do not require additional setup. The printer will dynamically inspect and identify all properly scaled graphic barcodes.
- The ODV2D firmware can be downloaded via the printer or via the ODV2D internal webpage.
- The ODV2D has an Ethernet port (hidden by cover plate) for access by trained service personnel to an onboard webpage that provides:

- Calibration and Alignment Wizards
- Trending Analysis
- The ability to capture and view images from the camera
- Advanced Diagnostics
- The calibration and alignment values can be checked via the Printer Control Panel (see page 32).
- White Gain and Reflectance values can be re-calibrated via the Printer Control Panel (see page 33).
- The overall grading accuracy can be checked using the Calibration Plaque (p/n P220237-001 for 4-inch model and p/n P220404-001 for the 6-inch model) provided with the unit via the Printer Control Panel.

Supported Barcodes

Table 1 lists the symbologies supported by the ODV2D.

Table 1 Symbologies Supported

| 1D Barcode | 2D Barcode |
|----------------------|------------------------|
| Code 39 | PDF417 |
| Interleaved 2/5 | PDF417 Limited |
| Code 93 | Micro PDF417 |
| Code 128 | DataMatrix (Square) |
| UPC/EAN | DataMatrix (Rectangle) |
| UPC/EAN Supplemental | QR |
| Codabar | |

Operational Parameters

The design parameters of the validator are as follows:

- The ODV2D can support labels of 24 inches maximum length.
- The ODV2D can track the performance of up to 50 barcodes on a label.
- The ODV2D can support 2-8 IPS setting for picket fence and 2-6 IPS for ladder.
- The ODV2D 4-inch requires a minimum narrow bar width of 10 mils (0.010 inch). This is equivalent to 2 dots at 203 DPI or 3 dots at 300 DPI.
- The ODV2D 6-inch 203 dpi requires a minimum narrow bar width of 15 mils (0.015 inch). This is equivalent to 3 dots at 203 DPI.
- The ODV2D 6-inch 300 dpi requires a minimum narrow bar width of 13.3 mils (0.0133 inch). This is equivalent to 3 dots at 300 DPI.
- The ODV2D can support bar codes with a minimum height dimension of 0.10 inch (linear 1-D codes).
- Depending on the complexity of the form and number of barcodes, the printer may pause between labels if required to complete the calculations on a given label.

Alignment and Calibration

If the ODV2D was shipped attached to the printer, the alignment and calibration can be checked before use following the Grading Submenu procedures starting on page 40 of this manual.

If the ODV2D was received unattached, the installation and initial alignment and calibration of the ODV2D must only be performed by trained service personnel. Contact your equipment provider or TSC Printronix Auto ID Service Representative for more information about the initial setup.

Purposes of Calibration

Calibration is needed for the following three purposes:

- To make sure the ODV2D unit is functioning properly. This requires the use of a Calibration Plaque that was supplied with your unit.
- To make sure the ODV2D unit is properly aligned with the printer. The ODV2D unit is connected via a bracket and fine tuning may be required if the unit is bumped or transported to another location.
- To make sure the ambient lighting conditions are considered when grading barcodes.

Enable the ODV2D

IMPORTANT If you make any changes to the default configuration menu items, you will be prompted to save the configuration when you attempt to put the printer online. See the printer's *Administrator's Manual* for more information about saving configurations.

Enabling and Disabling

Software can automatically detect an installed validator when the printer is powered up. The state of the ODV2D can be observed from the ONLINE screen as shown in Figure 1 below. If the printer is powered up with *Configs > Control > Power-Up Config* set to "Factory", the ODV2D icon can be selected and *ODV2-2D > Control > Validator Active* can be set to "Enable".

If Power-Up Config. is not set to Factory, the ODV2D icon can be selected, but *ODV2D > Control > Validator Active* is set to "Disable". Set this menu to "Enable" and save the configuration as described in the printer's *Administrator's Manual*. In the same manner, the validator can be disabled.

IMPORTANT Do not disable or enable the ODV2D with data in the buffer.



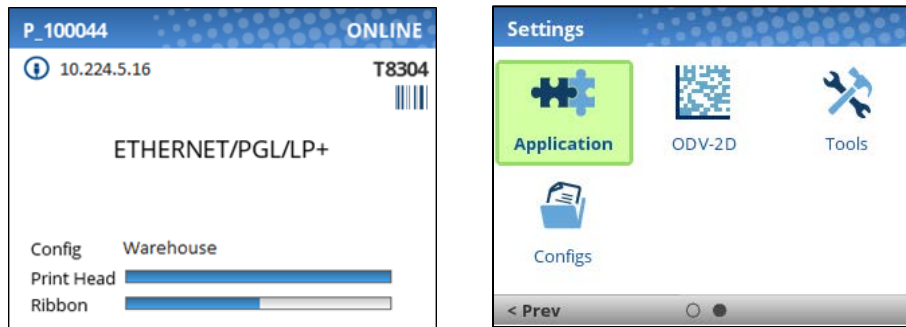
- The ONLINE screen will show the "enabled" validator symbol  under the model number when the ODV2D is installed AND enabled via the menu *ODV2D > Control > Validator Active*.
- The ONLINE screen will show the "disabled" validator symbol  under the model number when the ODV2D is installed and disabled via the menu *ODV2D > Control > Validator Active*.
- If no ODV2D is installed, then no validator symbol will be present on the ONLINE screen.
- The Settings screen will use validator icons as follows:
 - If the ODV2D is not installed, the greyed-out ODV2D icon will be present.
 - If the ODV2D is installed, the colored ODV2D icon will be present.
- Within the menu section, the ODV2D will use *ODV2D* (e.g., *ODV2D > Control*).

Figure 1 Online Screen and ODV2D Icon



Once the ODV2D is installed, the *ODV2D* section under Settings can be selected and the ODV2D configured. However, it may not be enabled by default:

- If the printer is powered up with the menu *Configs > Control > Power-Up Config* set to Factory, the *ODV2D > Control > Validator Active* will be set to “Enable” automatically.
- If the printer is powered up with *Configs > Control > Power-Up Config* to something other than Factory, the *ODV2D > Control > Validator Active* is set to “Disable”.

To enable the ODV2D, change the menu *ODV2D > Control > Validator Active* to “Enable” and save the configuration as described in the printer’s *Administrator’s Manual*.

2 Operation

ODV2D Menu Overview

The ODV2D menu section is structured into five submenus as follows:

- The **Control** submenu is used to configure how the ODV2D will operate with respect to the results provided by the validator. Those menus are described below.
- The **Symbology** submenu is used to configure which orientations and symbologies will be graded and which will be ignored.
- The **Grading** submenu is used to configure grading criteria of the barcodes found by the validator. Those menus are described below.
- The **Calibrate** submenu is used to confirm proper alignment and to re-calibrate the white gain and reflectance values. Those menus are described below.
- The **Diagnostics** submenu is used to run test procedures to help determine the accuracy and troubleshoot the validator. Those menus are described below.
- The **Statistics** submenu is general read-only and used to gather and report statistics on how the validator is reporting on print jobs sent to the printer. Those items are described below.

The ODV2D menu structure and its defaults are summarized in

Figure 2 and Figure 3.

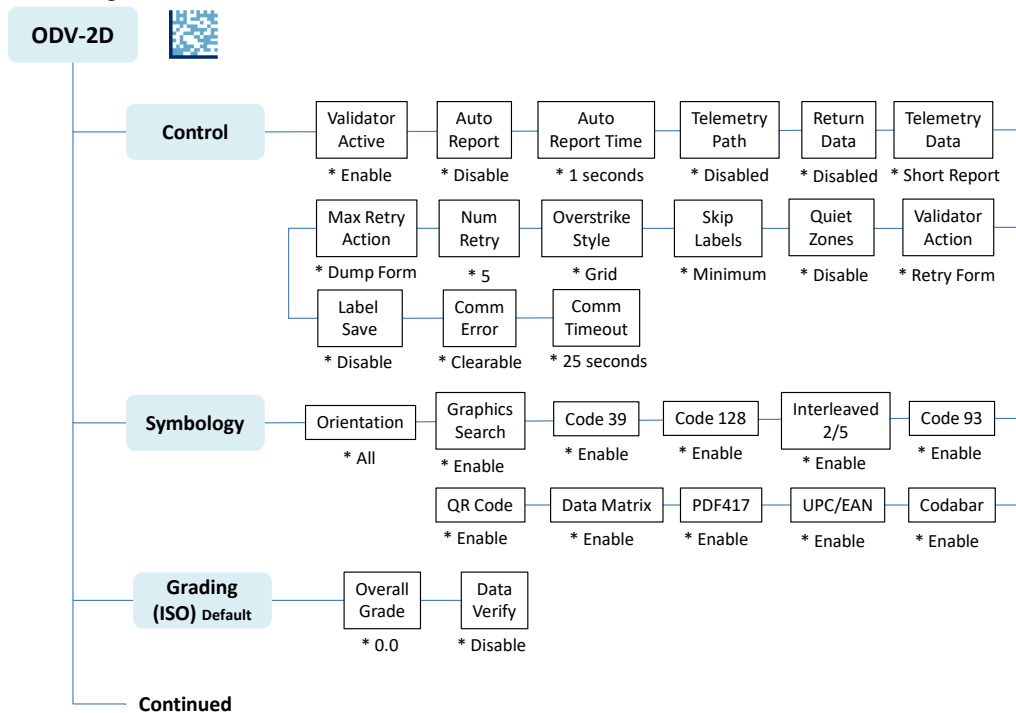


Figure 2 ODV2D Section and Submenus

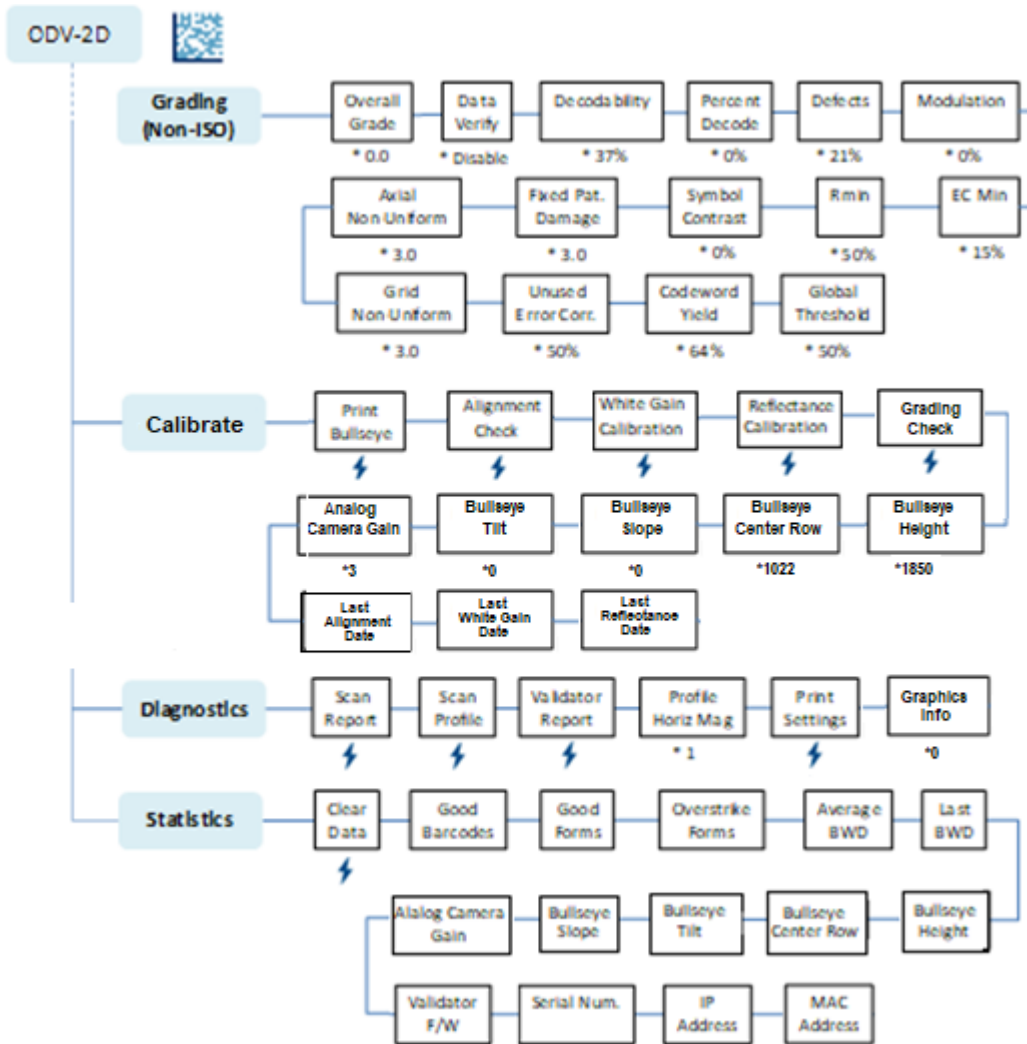



Figure 3 Validator Section and Submenus, Continued

Configuring the ODV2D

Configuring the validator is done by selecting the ODV2D icon  within the printer's menu Settings section. The ODV2D comes equipped with a default setting for each configuration option, and it works without having to change any of these options. However, in some cases it is necessary to adjust these options, which are described below.

IMPORTANT If you are unable to select the ODV2D icon or the icon is grey , then the validator is not properly installed. Please contact the Printronix Customer Support Center.

IMPORTANT If you make any changes to the default configuration menu items, you will be prompted to save the configuration. See "Auto Save Configuration" in the printer's *Administrator's Manual*.

Validator Reporting

After any completed print job or Bar Code Demo page, you can request a report from the printer which describes the validation statistics since the printer was turned on, or since the last data reset.

Requesting a Validator Report

This procedure prints a summarized validator report

1. Press the PAUSE key to take the printer OFFLINE.
2. If necessary, press the UP+DOWN ARROW keys at the same time to unlock the front panel.
3. Enter the menu *Tools > Print Tests > Run Tests*.
4. Find the printer test named “Valid. Report” and press the ENTER key.
5. Lock the panel again using the UP+DOWN ARROW keys.
6. Press PAUSE again to put the printer ONLINE.

Defining the Output Destination (Telemetry Path)

You may want to send a streaming flow of validation data to the PNE Auto ID Data Manager application during the print job. By default, this function is disabled.

To enable this function, set the menu *ODV2D > Control > Telemetry Path* to “Network Port”. The printer then outputs the bar code analysis and underlying data from the validator to the PNE connected to the network port so the validator data can be seen and analyzed with the optional remote management software.

Sending Validation Data (Return Data)

You may want to send a streaming flow of validation data to an external device during the print job. By default, this function is disabled.

To enable this function, set the menu *ODV2D > Control > Return Data* to “Data+Grade” or “Data+Grade+Fail”. The printer then outputs the bar code analysis and underlying data from the validator to a device connected to the port defined in the *System > Printer Mgmt > Ret. Status Port* menu so the ODV2D data can be seen and analyzed.

Resetting ODV2D Data

The ODV2D reports on all bar codes it detects since the last data reset. For example, you print a large batch of labels with bar codes and then print a validator report. Then you print another batch of labels with bar codes and print another report. The report will contain information on both batch jobs. However, if you reset the ODV2D data between batch jobs, the second report will only contain information on the second batch job.

To reset Validator Data, execute the menu *ODV2D > Statistics > Clear Data*.

Control Submenu

Several ODV2D options which define specific parameters for certain print jobs can be set from the printer configuration menu.

Validator Active

| ODV2D > Control > Validator Active | |
|--|---|
| <p>Software can automatically detect an installed validator when the printer is powered up. If the printer is powered up with <i>Configs > Control > Power-Up Config</i> set to "Factory", the Validator icon can be selected and this option is set to "Enable".</p> <p>If <i>Power-Up Config</i> is not set to Factory, the Validator icon can be selected, but this option is set to "Disable".</p> | |
| Disable | The ODV2D is disabled and not active. |
| Enable | The ODV2D is enabled and active. |
| Factory Default | Depends on <i>Configs > Control > Power-Up Config</i> setting. See above. |
| IMPORTANT | Do not disable or enable the ODV2D with data in the buffer. See "Resetting ODV2D Data". |
| IMPORTANT | When exiting Power Saver Mode, about 120 seconds is required to re-initialize ODV2D. A message will be displayed alerting the user of the delay. |

Auto Report

| ODV2D > Control > Auto Report | |
|---|--|
| This function allows you to disable or enable an automatic validator report printout after a batch job or Bar Code Demo page. | |
| Disable | No automatic validator report is printed after the job. |
| Enable | The validator report is printed after the batch job. The end of the batch is determined by either the EXECUTE command or by timeout using <i>ODV2D > Control > Auto Report Time</i> to the desired value (1 to 10 seconds). |
| Print&Clear | Same functionality as <i>Enable</i> with the validator statistics are cleared after the report is printed. After the report is printed, the front panel message will display informing the user the statistics are reset. |
| Scan Report | A diagnostic printout of bar code analysis parameters calculated by the ODV2D is printed. It allows you to determine which parameter may be the cause of bar code verification failures. The report printed is based on the last Full Report received from the ODV2D. Allows sending a bar code print job to the printer, having bar code evaluated by the ODV2D, and view a report of the parameters as seen by the ODV2D. For forms with multiple bar codes, only information from the last processed bar code will be included in the report. To view validator parameters for all bar codes on a form, use Auto ID Data Manager in PrintNet Enterprise. |
| Factory Default | Disable |

Auto Report Time

| ODV2D > Control > Auto Report Time | |
|---|------------|
| This function allows you to set the timeout for the Auto Report in seconds. If the printer is idle for the set number of seconds, an Auto Report will be generated if Auto Report is set to Enable. | |
| Minimum | 1 seconds |
| Maximum | 10 seconds |
| Factory Default | 1 seconds |

Telemetry Path

| ODV2D > Control > Telemetry Path | |
|--|---|
| <p>You may want to send a streaming flow of validation data to the PNE Auto ID Data Manager application during the print job. By default, this function is disabled.</p> <p>To enable this function, set this menu Path to "Network Port". The printer then outputs the bar code analysis and underlying data from the validator to the PNE connected to the network port so the validator data can be seen and analyzed with the optional remote management software.</p> | |
| Disabled | The ODV2D does not send any data to an external device. |
| Network Port | The printer outputs the bar code analysis and underlying data from the ODV2D to a device connected to the network port so the validator data can be seen and analyzed with the optional remote management software. |
| Factory Default | Disabled |

Return Data

| ODV2D > Control > Return Data | |
|---|---|
| <p>This option enables the ODV2D to send data out the status port as defined by <i>System > Printer Mgmt > Ret. Status Port</i>. If <i>System > Printer Mgmt > Ret. Status Port</i> uses <i>E-NET Stat Port</i>, use <i>System > Printer Mgmt > Status Port Number</i> to set port.</p> <p>This feature is designed to work best with <i>ODV2D > Control > Validator Action</i> set to <i>Retry Form</i>.</p> | |
| Disable | No data will be returned through the status port. |
| Data+Grade | The following data will be sent out the status port for every barcode found: <i>Grade, Barcode Data <Carriage Return><Line Feed></i> |
| Data+Grade+Fail | In addition to barcode grades and data, a failure indication will be sent out the return status port if the validator fails a label Max Retry times: <i>FAIL<Carriage Return><Line Feed></i> |
| Factory Default | Disable |
| IMPORTANT | <p>When the menu is set to something other than <i>Disable</i>, the printer will automatically change <i>ODV2D > Control > Telemetry Data</i> to <i>Full Report</i> since it is required for the feature.</p> <p>If, however, the user subsequently changes <i>Telemetry Data</i> to something different, barcode grades data will no longer be returned.</p> |

Telemetry Data

The validator sends a report to the selected data output destination. There are three different options controlled by the *ODV2D > Control > Telemetry Data* menu:

| ODV2D > Control > Telemetry Data | |
|---|--|
| The validator sends a report to the selected data output destination. There are three different options based on this menu. | |
| Short Report | Default setting. Provides the encoded failure cause or pass indication and the bar width deviation, shown as a percentage. |
| Full Report | Provides a completed report of all the data captured by the validator. |
| Validation Mode | Provides the same data as the Short Report, but adds the actual bar code data read. |
| Factory Default | Short Report |

Validator Action (Error Action)

The printer response is the same whether the error stems from a bad or missing bar code. This section will provide details on each particular selection and how it affects printer operation.

Forms Printed After an Error Detection

Because of physical differences between the location of the printhead and the beam, one or more forms may print after a bad form (a form with a bar code error that the validator detected).

The number of forms printed after a bad form depends on the *Media > Image > Label Length*, *Media > Speed > Print Speed*, and *Media > Speed > Slew Speed* settings. Shorter forms and faster speeds tend to increase the number of forms printed before the ODV2D has a chance to detect an error. Also, the ODV2D may not detect an error on forms that have bar codes near the bottom of the form until the next form has already started printing.

Forms that print after a bad form are treated differently, depending upon the error action mode selected (see Table 6). Modes that require a reprint operation may need to reprint more than just the bad form.

| ODV2D > Control > Validator Action | |
|--|--|
| The printer response is the same whether the error stems from a bad or missing bar code. It is determined by the Validator Action setting. | |
| Stop | If the validator detects a bar code failure, the print job stops. |
| Overstrike | Use Overstrike mode when you want bad labels to be marked and not reprinted. When running short labels, labels following the bad label may be overstruck too, but will be reprinted. Overstrike mode will work with any Gap/Mark sensor setting. |
| Overstrike One | Use Overstrike One mode when you want only bad labels to be marked and not reprinted. Overstrike One mode cannot be used when the Sensor is set to Disable. |
| Retry Form | This mode is similar to the Overstrike and Overstrike One modes. However, instead of resuming printing where the printer had left off, the printer will reprint the bad label too. |
| Stop & Retry | The printer will stop printing and display the error message. After the error message is cleared and the appropriate labels are skipped from <i>ODV2D > Control > Skip Labels</i> , it will reprint the bad form and any other forms printed prior to the physical stop. |
| Grade&Report | The entire print job will print uninterrupted. If one or more errors is detected, the printer status indicator lamp flashes, the alarm sounds, and the error message "Bar code fails / Job has errors" displays. |
| Rescan Form | Similar to the Retry Form mode, however, instead of backing up and overstriking the form, the printer will back up and rescan the bad form and any other forms that have already printed. |
| Rescan&Retry | Similar to Rescan Form with one exception: after the printer has rescanned the form and overstruck it if there was still a fault, it will reprint and rescan the same form again. |
| Rescan&Stop | Similar to the Retry Form mode, however, instead of backing up and overstriking the form, the printer will back up and rescan the bad form and any other forms that have already printed. |
| Factory Default | Retry Form |

Table 2 Actions Done to Forms after a Bad Form

Stop

If the ODV2D detects a bar code failure, the print job stops, the printer status indicator lamp flashes, the alarm sounds, and the appropriate error message displays.

The printer remains in a fault condition until you press the PAUSE key. This clears the error message and takes the printer OFFLINE. You must correct any condition that may have caused the fault. When ready,

the printer can be put back ONLINE and it will resume printing with the form immediately following the bad form and any other forms printed prior to the physical stop (see "Forms Printed After an Error Detection").

Overstrike

Use Overstrike mode when you want bad labels to be marked, but not reprinted (i.e., when using pre-numbered labels).

If the system detects a bar code failure, the print job stops, the printer status indicator lamp flashes, the alarm sounds, and the appropriate error message displays.

Without pausing, the printer then automatically reverses to the top of the bad form.

It then prints an obliterating pattern over the bad form and any other forms printed prior to the physical stop (see "Forms Printed After an Error Detection"). By default, the obliterating pattern is a grid of fine lines which clearly marks the label as bad but allows you to read what was originally printed.

NOTE: If short forms are being run, more than one form may be backed up and overstruck. If more than one form is overstruck, only the first overstruck form is lost (the one with the missing or bad bar code), and a separate print command is required to resend it from the host, if needed. The rest of the overstruck forms are automatically reprinted.

The *ODV2D > Control > Overstrike Style* options are: Grid, Grey, Checkerboard, or Error Type Msg. Select "Error Type Message" to see the error message printed on the bad form as the Overstrike Style.

After the overstrike printing, the printer clears the error message and stops the alarm, then resumes normal printing at the point the job was stopped.

Overstrike One

Similar to Overstrike, use Overstrike One mode when you want a bad label to be marked but not reprinted.

If the system detects a bar code failure, the print job stops, the printer status indicator lamp flashes, the alarm sounds, and the appropriate error message displays. The printer then automatically reverses to the top of the bad form. It then prints an obliterating pattern over the bad form ONLY. All other forms printed prior to the physical stop will NOT be overstruck and are still good.

By default, the obliterating pattern is a grid of fine lines which clearly marks the label as bad but allows you to read what was originally printed.

The *ODV2D > Control > Overstrike Style* options are: Grid, Grey, Checkerboard, or Error Type Msg. Select "Error Type Message" to see the error message printed on the bad form as the Overstrike Style.

After the overstrike printing, the printer clears the error message and stops the alarm, then resumes printing at the point the job was stopped.

Retry Form

This mode is like the Overstrike mode. However, instead of resuming printing where the printer had left off, the printer will attempt to reprint the bad form. The number of times the printer will attempt to print the form is determined by the *ODV2D > Control > Num Retry* setting

The printer will stop, indicate an error, and overstrike. Then it will skip several blank labels, depending on the setting for *ODV2D > Control > Skip Labels*. It will then slew to the next top of a blank form and reprint the bad form and any other overstruck forms (see "Forms Printed After an Error Detection").

Once the *ODV2D > Control > Num Retry* counter has been exhausted, the print job stops completely. After you clear the error message, the printer will print the same label or the next label, depending on the setting for *ODV2D > Control > Max Retry Action*.

Stop & Retry

This mode is like the Stop mode: the printer will stop printing and display the error message. After you clear the error message, it will then skip several blank labels, depending on the setting for *ODV2D >*

Control > Skip Labels. Then it will slew to the next top of a blank form and reprint the bad form and any other forms printed prior to the physical stop (see “Forms Printed After an Error Detection”).

NOTE: The number of times the printer will attempt to reprint the bad form is determined by the *ODV2D > Control > Num Retry* setting.

The printer will stop after the specified *ODV2D > Control > Num Retry* attempts. After you clear the error message, the printer will print the same label or the next label, depending on the setting for *ODV2D > Control > Max Retry Action*.

Grade&Report

In this mode, the entire print job will print uninterrupted. If one or more errors is detected, the printer status indicator lamp flashes, the alarm sounds, and the error message “Bar code fails / Job has errors” displays.

IMPORTANT The error message lets you know that at least one bad form printed. To determine which form(s) are bad, you must manually scan all of them.

The printer remains in a fault condition until you press the PAUSE key. This clears the error message and takes the printer OFFLINE. Correct any condition that may have caused the fault, then press PAUSE to place the printer back ONLINE.

Rescan Form

This mode is like the Retry Form mode, however, instead of backing up and overstriking the form, the printer will back up and rescan the bad form and any other forms that have already printed (see “Forms Printed After an Error Detection”).

NOTE: The printer will only attempt this once before declaring an error.

If the printer scans these forms correctly on any of the rescans, it will continue printing with the next form.

If the printer fails to scan these forms correctly, it will overstrike the forms, stop, and indicate an error like Stop mode. After you clear the error message, the printer will skip several blank labels, depending on the setting for *ODV2D > Control > Skip Labels*.

It will then slew to the next top of a blank form and reprint the same form or go the next form, depending on the setting for *ODV2D > Control > Max Retry Action*.

NOTE: The only difference between Rescan Form and Rescan&Stop is that when a form still fails after all the rescans, Rescan Form will overstrike the bad form, whereas Rescan&Stop will not.

Rescan&Retry

This mode is similar to Rescan Form with one exception: after the printer has rescanned the form and overstruck it if there was still a fault, it will reprint and rescan the same form again.

NOTE: The printer will only attempt this once before declaring an error.

The number of times the printer will attempt to *reprint* the bad form is determined by the *ODV2D > Control > Num Retry* setting.

If the printer scans these forms correctly on any of the rescans or reprints, it will continue printing with the next form.

If the printer fails to scan these forms correctly on all the rescans and reprints, it will overstrike the forms, stop, and indicate an error like Stop mode. After you clear the error message, the printer will skip several blank labels, depending on the setting for *ODV2D > Control > Skip Labels*.

It will then slew to the next top of a blank form and reprint the same form or go the next form, depending on the setting for *ODV2D > Control > Max Retry Action*.

Rescan&Stop

This mode is like the Retry Form mode, however, instead of backing up and overstriking the form, the printer will back up and rescan the bad form and any other forms that have already printed (see “Forms Printed After an Error Detection”).

NOTE: The printer will only attempt this once before declaring an error.

If the printer scans these forms correctly on any of the rescans, it will continue printing with the next form.

If the printer fails to scan these forms correctly on all the rescans, it will stop and indicate an error like Stop mode. After you clear the error message, the printer will skip several blank labels, depending on the setting for *ODV2D > Control > Skip Labels*.

It will then slew to the next top of a blank form and reprint the same form or go to the next form, depending on the setting for *ODV2D > Control > Max Retry Action*.

NOTE: The only difference between Rescan Form and Rescan&Stop is that when a form still fails after all the rescans, Rescan Form will overstrike the bad form, whereas Rescan&Stop will not.

Quiet Zones

| ODV2D > Control > Quiet Zones | |
|---|--|
| <p>Quiet zones are the white spaces surrounding the bar code. Each bar code requires a minimum quiet zone distance in order for the bar code to be scanned properly.</p> <p>The validator requires a minimum distance of 1/2" or 20 times the minimum element width (x-dimension), whichever is greater, between bar codes.</p> | |
| Disable | The quiet zone is not included in pass/fail criteria. |
| Enable | The bar code quiet zone is included as part of the pass/fail criteria. |
| Factory Default | Disable |
| IMPORTANT | The validator does not recognize x-dimensions greater than 40 mil with Quiet Zones enabled. |

Skip Labels

| ODV2D > Control > Skip Labels | |
|---|---|
| <p>This option is used for skipping blank labels after bad labels have been marked. It is useful when you want to have extra blank labels in between bad and good ones.</p> | |
| Minimum | Up to one blank label skipped. |
| Maximum | Up to two blank labels skipped. |
| Factory Default | Minimum |
| IMPORTANT | Minimum and Maximum blank labels are only applicable for forms 2 inches (5.08 cm) high or more. For labels less than 2 inches high, the minimum and maximum blank labels may vary. |

Overstrike Style

| ODV2D > Control > Overstrike Style | |
|--|---|
| <p>This option is used for marking bad labels with different overstrike styles: Grid (the default), Grey, Checkerboard, or Error Type Msg.</p> | |
| Grid | Grid Pattern |
| Grey | Grey Pattern |
| Checkerboard | Checkerboard Pattern |
| Error Type Msg | Error Msg with type of failure will overwrite label |
| Factory Default | Grid |

Num Retry

| ODV2D > Control > Num Retry | |
|--|--|
| This option allows you to set the number of times a form will be printed before the printer stops. After you clear the error message, the printer will print the same form or the next form, depending on the setting for Max Retry Action (see “Max Retry Action” below). | |
| Minimum | 3 |
| Maximum | 5 |
| Factory Default | 5 |
| IMPORTANT | This setting is utilized only when Validator Action is set to Retry Form, Stop & Retry, or Rescan&Retry. See “Validator Action (Error Action)”. |

Max Retry Action

| ODV2D > Control > Max Retry Action | |
|---|--|
| This option determines what the printer will do with the current form once the Num Retry counter has been exhausted (see “Num Retry” above). In the case of any Rescan modes, only one rescan form will be attempted. | |
| Dump Form | After you clear the fault the form will be dumped and printing will resume with the next form. |
| Keep Form | After you clear the fault printing will resume with the same form again. It will not attempt to print the next form until the problem form has printed correctly. |
| Factory Default | Dump Form |
| IMPORTANT | This setting is utilized only when Validator Action is set to Retry Form, Stop & Retry, Rescan Form, Rescan&Retry, or Rescan&Stop. “Validator Action (Error Action)”. |

Label Save

| ODV2D > Control > Label Save | |
|--|--|
| The printer will often be printing a label when it determines that the label printed before the immediate label was defective. | |
| Disable | When set to disable, the printer pulls both labels back, overstrikes them and then reprints them. |
| Enable | With Label Save enabled, the ODV will accept or reject the label it just printed before it prints the next label. When a label is found defective, it will only overstrike that label. |
| Factory Default | Disable |
| IMPORTANT | Label Save enabled causes a slight throughput reduction. |

Comm Error

| ODV2D > Control > Comm Error | |
|--|--|
| This menu allows the 'Validator not communicating' error to be clearable by the user or not clearable by the user. | |
| Not Clearable | The user must resolve the error and recycle the printer power to print. |
| Clearable | The user will be able to clear the fault and print jobs. Barcodes in these jobs will not be validated. |
| Factory Default | Clearable |

Comm Timeout

| ODV2D > Control > Skip Labels | |
|---|---|
| This option is used to control the threshold of time the validator does not respond with verification status before declaring an error. | |
| Minimum | 10 seconds |
| Maximum | 180 seconds |
| Factory Default | 25 seconds |
| IMPORTANT | For labels with complex and significant data encoded in 2D barcodes, this menu may need to be increased. |

Symbology Submenu

Several ODV2D options which define which barcodes will be graded and which will be ignored. This can be chosen based on symbology or orientation. Note there are also PTX-SETUP commands that can be used to configure these options as described in Section "PTX_SETUP Control".

Orientation

| ODV2D > Symbology > Orientation | |
|---|--|
| This menu selects the barcode orientations that will be processed and graded and which will be ignored. | |
| All | All orientations will be graded. |
| Picket | Picket barcodes and 2-D barcodes in 0 and 180 degree rotations. |
| Ladder | Ladder barcodes and 2-D barcodes in 90 and 270 degree rotations. |
| Factory Default | All |

Graphics Search

| ODV2D > Symbology > Graphics Search | |
|--|---------------------------------------|
| This menu determines if parts of the label defined with graphics (as opposed to emulation commands) should be searched for barcodes. Graphics are often used in jobs sent via Windows Drivers or from a Postscript or PDF emulation. Searching graphics takes more processing time and this menu should be disabled for jobs with heavy graphics usage in which barcodes don't exist. | |
| Enable | Search graphics for barcodes. |
| Disable | Ignore graphics in terms of barcodes. |
| Factory Default | Enable |

Code 39

| ODV2D > Symbology > Code 39 | |
|--|------------------------------|
| Determines if Code 39 barcodes should be processed or ignored. | |
| Enable | Search for Code 39 barcodes. |
| Disable | Ignore Code 39 barcodes. |
| Factory Default | Enable |

Code 128

| ODV2D > Symbology > Code 128 | |
|---|-------------------------------|
| Determines if Code 128 barcodes should be processed or ignored. | |
| Enable | Search for Code 128 barcodes. |
| Disable | Ignore Code 128 barcodes. |
| Factory Default | Enable |

Interleaved 2/5

| ODV2D > Symbology > Interleaved 2/5 | |
|--|--------------------------------------|
| Determines if Interleaved 2/5 barcodes should be processed or ignored. | |
| Enable | Search for Interleaved 2/5 barcodes. |
| Disable | Ignore Interleaved 2/5 barcodes. |
| Factory Default | Enable |

Code 93

| ODV2D > Symbology > Code 93 | |
|--|------------------------------|
| Determines if Code 93 barcodes should be processed or ignored. | |
| Enable | Search for Code 93 barcodes. |
| Disable | Ignore Code 93 barcodes. |
| Factory Default | Enable |

Codabar

| ODV2D > Symbology > Codabar | |
|--|------------------------------|
| Determines if Codabar barcodes should be processed or ignored. | |
| Enable | Search for Codabar barcodes. |
| Disable | Ignore Codabar barcodes. |
| Factory Default | Enable |

UPC/EAN

| ODV2D > Symbology > UPC/EAN | |
|--|------------------------------|
| Determines if UPC/EAN barcodes should be processed or ignored. | |
| Enable | Search for UPC/EAN barcodes. |
| Disable | Ignore UPC/EAN barcodes. |
| Factory Default | Enable |

PDF417

| ODV2D > Symbology > PDF417 | |
|---|-----------------------------|
| Determines if PDF417 barcodes should be processed or ignored. | |
| Enable | Search for PDF417 barcodes. |
| Disable | Ignore PDF417 barcodes. |
| Factory Default | Enable |

Data Matrix

| ODV2D > Symbology > Data Matrix | |
|--|----------------------------------|
| Determines if Data Matrix barcodes should be processed or ignored. | |
| Enable | Search for Data Matrix barcodes. |
| Disable | Ignore Data Matrix barcodes. |
| Factory Default | Enable |

QR Code

| ODV2D > Symbology > Code QR | |
|--|------------------------------|
| Determines if QR Code barcodes should be processed or ignored. | |
| Enable | Search for QR Code barcodes. |
| Disable | Ignore QR Code barcodes. |
| Factory Default | Enable |

Grading Submenu

As described in Section “ISO versus Non-ISO”, the menu **Grading Mode** will determine how this section will be used and configured.

Grading Mode

| ODV2D > Grading > Grading Mode | |
|--|---|
| This menu selects the type of barcode grading performed. The mode selected will dictate the types of barcode grading faults that will be reported during validation. | |
| ISO | The Overall Grade per ISO standards will determine if the barcodes pass or not. All quality parameter menus will be hidden and only Overall Grade will be selectable. |
| Non-ISO | This mode allows the user to set custom failure thresholds on individual barcode quality parameters. Changing individual quality parameters may lead to non-ISO standard grading. All quality parameter menus are visible and user adjustable in this mode. |
| Factory Default | ISO |
| WARNING | It is recommended that only users that understand both the ISO standards and the end user barcode quality requirements change any parameters when in the non-ISO mode. |

Overall Grade

| ODV2D > Grading > Overall Grade | |
|--|--|
| <p>This menu item sets the value used by the validator for pass/fail threshold during the analysis of bar codes. Instead of a letter grade, numbers are used to allow for more resolution. Higher values create a stricter pass criterion. The numbers can be translated to letter grades per below:</p> <p style="margin-left: 40px;">Letter Grade A = 3.5 to 4.0 range Letter Grade B = 2.5 to 3.4 range Letter Grade C = 1.5 to 2.4 range Letter Grade D = 0.5 to 1.4 range Letter Grade F = 0.0 to 0.4 range</p> <p>The Overall Grade is determined by taking the lowest grade obtained for any of the applicable bar code quality parameters. See Section “Parameter Applicability” for more details.</p> | |
| Minimum | 0.0 |
| Maximum | 4.0 |
| Factory Default | 0.0 |
| IMPORTANT | Any bar code with a grade below this threshold value will cause the printer to display the Overall Grade Fail error message (see “Troubleshooting Error Messages”) and take the appropriate error action. |

Data Verify

| ODV2D > Grading > Data Verify | |
|---|--|
| <p>This menu chooses whether to compare the data that comes from the validator is the same as the data that was used to create the barcode from the emulations.</p> | |
| Disable | The data used by the emulations to create the barcode is not compared to the data returned from the verifier. |
| Enable | The data used by the emulations to create the barcode is compared to the data returned from the verifier. If there is a mismatch, then the fault <i>Data Mismatch</i> will be declared if the successive retries do not solve the problem. |
| Factory Default | Disable |
| IMPORTANT | The data is only compared when the emulation is providing the data. Barcodes that are encoded via graphics cannot compare data. |

Decodability

| ODV2D > Grading > Decodability | |
|---|--|
| Decodability is a measurement of the variance in the width of the bars and spaces which compose the bar code. It always factors into the Overall Grade. This menu allows the user to specify a stricter requirement for Decodability beyond the ISO compliant overall grade. The ODV2D will fail any barcode with a Decodability at or below the value set in this menu, regardless of overall grade. | |
| BARCODES | All 1D, PDF417 |
| Minimum | 30% |
| Maximum | 90% |
| Factory Default | 37% |
| IMPORTANT | Factors into the Overall Grade (page 31). |

Percent Decode

| ODV2D > Grading > Percent Decode | |
|--|--|
| You can set how strict the validator grades each bar code. For example, setting Percent Decode to 60% means that 60% of the scanned bar code must be readable for the ODV2D to give the bar code a passing grade. The higher the percentage value chosen, the stricter the validator grades. | |
| BARCODES | All 1D |
| Minimum | 0% |
| Maximum | 99% |
| Factory Default | 0% |
| IMPORTANT | Factors into the Overall Grade (page 31). |

Defects

| ODV2D > Grading > Defects | |
|---|--|
| You can set how strict the validator grades the irregularities such as voids and spots found within elements and quiet zones for each bar code. For example, the Defects default is 21%. This means that if the bar code and quiet zone defects exceed 21%, the ODV2D gives the bar code a failing grade. The lower the percentage value chosen, the stricter the ODV2D grades. | |
| BARCODES | All 1D, PDF417 |
| Minimum | 0% |
| Maximum | 100% |
| Factory Default | 21% |
| IMPORTANT | Factors into the Overall Grade (page 31). |

Modulation

| ODV2D > Grading > Modulation | |
|---|--|
| <p>Modulation measures how well the ODV2D sees the wide elements (bars or spaces) relative to the narrow elements. This menu item sets the value used by the ODV2D for pass/fail threshold during the analysis of bar codes. Higher values create a stricter criterion for passing.</p> | |
| BARCODES | All |
| Minimum | 0% |
| Maximum | 100% |
| Factory Default | 0% |
| IMPORTANT | Factors into the Overall Grade (page 31). |

EC Min

| ODV2D > Grading > EC Min | |
|---|--|
| <p>This menu item sets the minimum edge contrast, which is the worst edge transition (bar to space or space to bar) used by the ODV2D for pass/fail threshold during the analysis of bar codes. Bar codes with an edge contrast below this threshold will fail. The higher the value, the stricter the criterion.</p> | |
| BARCODES | All 1D, PDF417 |
| Minimum | 0% |
| Maximum | 100% |
| Factory Default | 15% |
| IMPORTANT | Factors into the Overall Grade (page 31). |

RMin

| ODV2D > Grading > RMin | |
|---|--|
| <p>This menu item sets the minimum reflectance value used by the ODV2D for pass/fail threshold used during the analysis of bar codes. A bar code will fail if all the bar reflectance values are above the percentage of space reflectance set by this threshold. For example, an Rmin setting of 50% requires that at least one bar reflectance value fall under the midpoint of the reflectance value read for the highest space reflectance.</p> | |
| BARCODES | All 1D, PDF417 |
| Minimum | 0% |
| Maximum | 100% |
| Factory Default | 50% |
| IMPORTANT | Factors into the Overall Grade (page 31). |

Symbol Contrast

| ODV2D > Grading > Symbol Contrast | |
|--|--|
| Symbol Contrast represents the contrast between the bars and spaces in the bar code used by the validator for pass/fail threshold used during the analysis of bar codes. The bar code must have a certain level of contrast to be recognized by the ODV2D. Bar codes with a symbol contrast below the threshold will fail. The higher the value, the stricter the criterion for passing. | |
| BARCODES | All |
| Minimum | 0% |
| Maximum | 100% |
| Factory Default | 0% |
| IMPORTANT | Factors into the Overall Grade (page 31). |

Fixed Pattern Damage

| ODV2D > Grading > Fixed Pat. Damage | |
|--|--|
| <p>Fixed Pattern Damage is a measurement of damage to the finder pattern where modulation scores for the fixed pattern portions of 2D matrix barcodes are degraded. This failure may be caused by physical damage to the code such as a mark or scuff or may be due to printing errors such as a bad print head.</p> <p>The ODV2D will fail any barcode with a fixed pattern damage at or below the value set in this menu, regardless of overall grade.</p> | |
| BARCODES | DataMatrix, QR |
| Minimum | 0.0 |
| Maximum | 4.0 |
| Factory Default | 3.0 |
| IMPORTANT | Factors into the Overall Grade (page 31). |

Axial Non-Uniformity

| ODV2D > Grading > Axial Non-Uniform | |
|--|--|
| <p>Axial Non-Uniformity is a measurement of the uneven scaling of symbol obtained by measuring the module centers in both the X and Y axis. Low axial non-uniformity grades may be caused by software errors in code generation or print speed variation during printing.</p> <p>The ODV2D will fail any barcode with an axial non-uniformity at or below the value set in this menu, regardless of overall grade.</p> | |
| BARCODES | DataMatrix, QR |
| Minimum | 0.0 |
| Maximum | 4.0 |
| Factory Default | 3.0 |
| IMPORTANT | Factors into the Overall Grade (page 31). |

Grid Non-Uniformity

| ODV2D > Grading > Grid Non-Uniform | |
|--|--|
| <p>Grid Non-Uniformity is a measurement of deviation of the scanned grid from the ideal grid (deviation of measured grid intersection positions of a 2D matrix barcode from ideal theoretical positions). Low grid non-uniformity grades may be caused by media slippage during printing.</p> <p>The ODV2D will fail any barcode with grid non-uniformity at or below the value set in this menu, regardless of overall grade.</p> | |
| BARCODES | DataMatrix, QR |
| Minimum | 0.0 |
| Maximum | 4.0 |
| Factory Default | 3.0 |
| IMPORTANT | Factors into the Overall Grade (page 31). |

Unused Error Correction

| ODV2D > Grading > Unused Error Corr. | |
|--|--|
| <p>Unused Error Correction is a measurement of the amount of margin available to recover damage using error correction. Low unused error correction is usually due to regional or spot damage in the code.</p> <p>The ODV2D will fail any barcode with an unused error correction at or below the value set in this menu, regardless of overall grade.</p> | |
| BARCODES | PDF417, DataMatrix, QR |
| Minimum | 0% |
| Maximum | 100% |
| Factory Default | 50% |
| IMPORTANT | Factors into the Overall Grade (page 31). |

Codeword Yield

| ODV2D > Grading > Codeword Yield | |
|---|--|
| <p>Codeword yield is a measurement of the number of validly decoded code words expressed as a percentage of the maximum number of code words that could have been decoded. The amount of margin available to recover damage using error correction. Low codeword yield may indicate a y-axis failure in the barcode such as thermal drag.</p> <p>The ODV2D will fail any barcode with a codeword yield at or below the value set in this menu, regardless of overall grade.</p> | |
| BARCODES | PDF417 |
| Minimum | 0% |
| Maximum | 100% |
| Factory Default | 64% |
| IMPORTANT | Factors into the Overall Grade (page 31). |

Global Threshold

| ODV2D > Grading > Global Threshold | |
|---|--|
| <p>This menu sets the threshold used by ODV2D to interpret a scan reflectance profile into bars and spaces. Reflectance profile values above the Global Threshold are spaces and values below the threshold are bars. The Global Threshold will set the bar/space transition point between the highest (Rmax) and lowest (Rmin) reflectance of a scan profile. The bar/space transition point formula is: $R_{min} + (R_{max} - R_{min}) * (\text{Global Threshold}) / 100$.</p> | |
| BARCODES | All |
| Minimum | 0% |
| Maximum | 100% |
| Factory Default | 50% |
| IMPORTANT | Factors into the Overall Grade (page 31). |

Calibrate Submenu

The steps defined in this submenu allow the end user to check that the ODV2D remains in calibration and to set the white gain and reflectance values based on known values on the Printronix Auto ID GS1 Calibration plaque. A test of 1D barcode grading accuracy can be run using the same plaque.

Print Bullseye

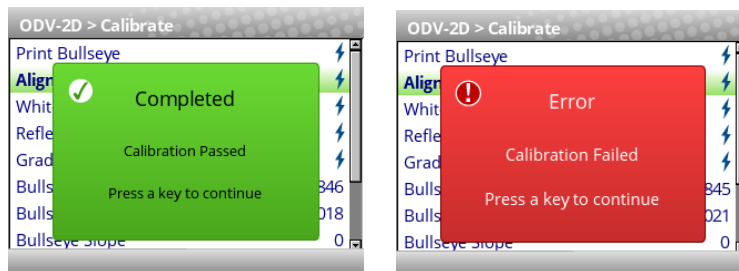
| ODV2D > Calibrate > Print Bullseye |
|---|
| The Bullseye pattern is used for the calibration process to align the ODV2D unit properly with respect to center-line, tilt and slope. Before printing the Bullseye pattern, make sure that full width media is installed, and that the image quality is properly adjusted. |
| This executable menu will print the Bullseye pattern 0.20" from the lead edge of the label. |

Alignment Check

| ODV2D > Calibrate > Alignment Check |
|---|
| This is used to test that the unit is still properly aligned using the Bullseye test pattern. When selected, a label will advance, and the Bullseye pattern will be printed. Let the extra label hang. A poor Bullseye image will cause the alignment check to fail. If the first check does fail, check the print quality, make corrections as needed, then re-run the test (refer to printer's Administrators Manual for details on adjusting image print quality). |

After the check is made, either the Calibration Complete screen or the Error screen will be displayed:

Refer to the Troubleshooting section of this manual for the complete table of error messages and possible solutions.



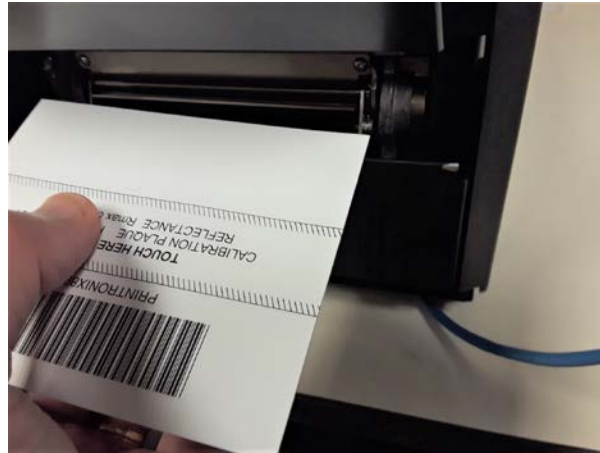
If the Completed screen appears, press any key to return to normal operation. If the Error screen appears, make sure that the Bullseye pattern is dark black, without any white voids in the lines. If the Bullseye print quality is poor, correct the issue and re-run the test.

If the test fails a second time, the ODV2D alignment is beyond allowable limits and should be re-aligned and re-calibrated. In most cases, the equipment will continue to run in this condition. However, barcode grades may be one grade lower (i.e. B= C) than actual. The system will never pass a failing barcode. Please contact your TSC Printronix Auto ID Service Representative or authorized service provider to perform the re-calibration and alignment process.

White Gain Calibration

ODV2D > Calibrate > White Gain Calibration

This is used to reset the White Gain values using the Calibration Plaque that was provided with the ODV2D. Place the “white” side of the plaque into the printer’s exit nip below the ODV2D (see photo). Follow the on-screen prompts to complete this adjustment.



Reflectance Calibration

ODV2D > Calibrate > Reflectance Calibration

This is used to reset the Reflectance values using the Calibration Plaque that was provided with the ODV2D. Place the “Barcode” side of the plaque into the printer’s exit nip below the ODV2D (see photo). Follow the on-screen prompts to complete this adjustment.

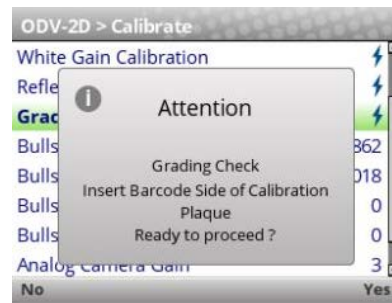
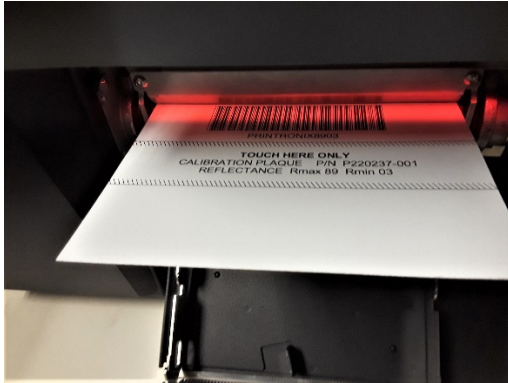


Grading Check

ODV2D > Calibrate > Grading Check

This is used to check the barcode grading against a known standard barcode using the Calibration Plaque that was provided with the ODV2D. Once selected, the display will instruct you to insert the Calibration Plaque, and after confirmation the ODV2D will start grading the barcode.

Once the Grading Check is selected, the display will instruct you to insert the Calibration Plaque as shown below (barcode towards the printer), then press the Right SOFT key for Yes when ready and the ODV2D will start scanning the barcode.

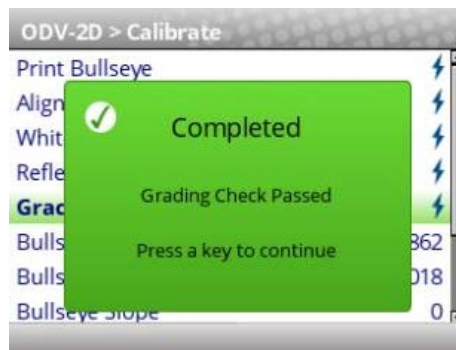


The ODV2D decides if the check passes under the following conditions:

- Overall Grade \geq 3.5 (Grade A)
- Symbol Contrast \geq 70 (ISO Grade 4 minimum)

Pass / Fail results will be displayed in one of the following popup messages:

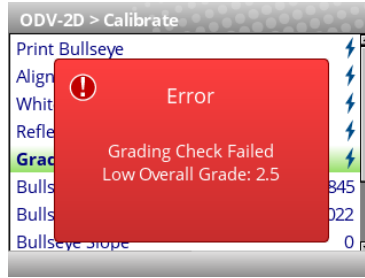
- Calibration Passed
-When Decoded ok, Overall Grade \geq 3.5, Symbol Contrast \geq 70)



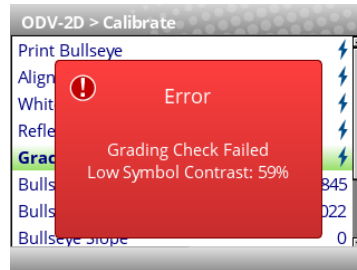
If the test passes, press any key to return the printer to normal operation.

If the Grading Check fails...

- Overall Grade Fail - When Decoded ok, good contrast, but Overall Grade < 3.5

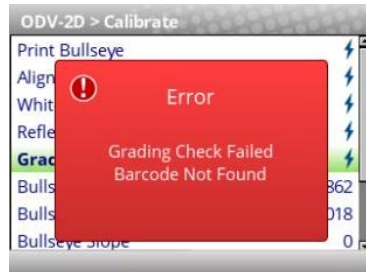


- Symbol Contrast too low - When Decoded ok, but Symbol Contrast < 70)



In most cases, the equipment will continue to run in these conditions. However, barcode grades may be reported one grade lower (i.e. B= C) than actual. The system will never pass a failing barcode.

- Calibration Failed, Barcode Not Found - When barcode cannot be decoded



Make sure the Calibration Plaque is oriented correctly into the printer as shown above. If not, reposition the card and run the Grading Check a second time.

Check that the Calibration Plaque has no smudges, fingerprints or other contamination that would prevent the scanner from reading and properly grading the barcode. Only perform this test with a clean, undamaged Calibration Plaque.

Bullseye Height

| ODV2D > Calibrate > Bullseye Height | |
|--|---|
| This menu item displays the value determined during the alignment process. | |
| Minimum | 1829 |
| Maximum | 1870 |
| Measured Value | Will display actual value – must be between Min/Max |

Bullseye Center Row

| ODV2D > Calibrate > Bullseye Center Row | |
|--|---|
| This menu item displays the value determined during the alignment process. | |
| Minimum | 1020 |
| Maximum | 1025 |
| Measured Value | Will display actual value – must be between Min/Max |

Bullseye Slope

| ODV2D > Calibrate > Bullseye Slope | |
|--|---|
| This menu item displays the value determined during the alignment process. | |
| Minimum | - 20 |
| Maximum | 20 |
| Measured Value | Will display actual value – must be between Min/Max |

Bullseye Tilt

| ODV2D > Calibrate > Bullseye Tilt | |
|--|---|
| This menu item displays the value determined during the alignment process. | |
| Minimum | - 100 |
| Maximum | 100 |
| Measured Value | Will display actual value – must be between Min/Max |

Analog Camera Gain

| ODV2D > Calibrate > Analog Camera Gain | |
|--|--|
| Advanced User Item: This menu item displays the value determined during the calibration process. | |
| Measured Value | Will display actual value. Useful for advanced trouble shooting (no user adjustments available). |

Last Alignment Date

| ODV2D > Calibrate > Last Alignment Date | |
|---|-------------------------|
| Displays the Date when the last alignment check was performed | |
| Value | Day-Month-Year (actual) |

Last White Gain Date

| ODV2D > Calibrate > Last White Gain Date | |
|--|-------------------------|
| Displays the Date when the last White Gain Calibration was performed | |
| Value | Day-Month-Year (actual) |

Last Reflectance Date

| ODV2D > Calibrate > Last Reflectance Date | |
|---|-------------------------|
| Displays the Date when the last Reflectance Calibration was performed | |
| Value | Day-Month-Year (actual) |

Diagnostics Submenu

Scan Report

IMPORTANT To print a Scan Report, *ODV2D > Control > Telemetry Data* must be set to the option “Full Report”.

This executable menu item prints a diagnostic printout of bar code analysis parameters calculated by the ODV2D. It allows you to determine which parameter may be the cause of bar code verification failures. The report printed is based on the last Full Report received from the ODV2D. This allows you to send a bar code print job to the printer, have the bar code evaluated by the ODV2D, and view a report of the parameters as seen by the ODV2D.

For forms with multiple bar codes, only information from the last processed bar code will be included in the report. To view validator parameters for all bar codes on a form, use the Auto ID Data Manager within PrintNet Enterprise.

IMPORTANT If the label is not wide enough, not all the information will print.

The printed report is generated from ODV2D reports received by the printer during printing. The report does not include information about bar codes that are placed in the ODV2D scanning beam while the printer is idle or from print jobs that generate an “Unscannable: xx Missing Codes” error message.

The number of Total Scans and Good Scans can help you determine if the print speed is set too high and causing borderline failures. The Scan Report is based on the last Full Report received by the validator. Therefore, if the last bar code printed is positioned close to the last inch of the form, and on-demand printing occurs to force the last bar code to be fed past the ODV2D beam, the Total Scans and Good Scans reported will not be the same as those reported by the ODV2D when printing at the set *Media > Speed > Print Speed*. This is because the on-demand printing portion is done at a fixed print speed which may be higher or lower than the set Print Speed. For example, a bar code printed at 7 ips may yield eight Total Scans, but if printed in an on-demand printing mode it may yield 18 Total Scans.

Scan Report Information

1. “ERROR:” followed by highest priority failure message (if an error other than “Unscannable Code” occurred) or “None” if no error occurred
2. Orientation (does not apply to 2-D codes)
3. Printout of characters read from the bar code
4. Symbology Type Read (e.g., Code 39, Code 128)
5. Overall Grade (letter grade and calculated/number value)
6. Aperture (mils)
7. Wavelength (nm)
8. X dimension (mils)
9. Decodability (%)
10. Modulation (%)
11. Symbol Contrast (%)
12. Edge Contrast (%)
13. Defects (%)
14. Rmin
15. Rmax
16. PCS (Print Contrast Signal)
17. Percent Decode (%)
18. Bar Deviation Avg (%)

19. Min. Bar Deviation (%)
20. Max. Bar Deviation (%)
21. Ratio
22. Good Scans
23. Total Scans

The following is a sample scan report of a Code 39, 10 mil bar code containing "*PTX8702*" with a quiet zone violation:

SCAN REPORT

| | |
|--------------------------------------|-----------------|
| ERROR: Bar code quiet zone too small | |
| Orientation | Picket |
| Barcode Data: | [ST]PTX8702[ST] |
| Symbology | Code 39 |
| Overall Grade | C (2.1) |
| Aperture (mils) | 10 |
| Wavelength (nm) | 624 |
| X dimension (mils) | 09.9 |
| Decodeability (%) | 65 |
| Modulation (%) | 34 |
| Symbol Contrast (%) | 68 |
| Edge Contrast (%) | 30 |
| Defects (%) | 14 |
| Rmin | 4 |
| Rmax | 86 |
| PCS | 92 |
| Percent Decode (%) | 100 |
| Bar Deviation Avg (%) | -16 |
| Min. Bar Deviation (%) | -31 |
| Max. Bar Deviation (%) | -4 |
| Ratio | 2.0 |
| Good Scans | 10 |
| Total Scans | 10 |

Scan Profile

This is an executable menu that prints the scan reflectance profile of a picket fence bar code placed in the ODV2D camera beam. It does not work for ladder or 2-D codes.

IMPORTANT: You will need a minimum installed label width of 2 inches to support the Scan Profile printout.

1. Press the PAUSE key to take the printer OFFLINE.
2. If necessary, press the UP+DOWN ARROW keys at the same time to unlock the front panel.
3. Find *ODV2D > Diagnostics > Scan Profile*.
4. Place a bar code in the scanning beam path.
5. Press ENTER key to scan the bar code.
6. When prompted on the control panel, remove the scanned bar code.
7. Press ENTER key to print the scan profile.
8. Lock the panel again using the UP+DOWN ARROW keys.
9. Press PAUSE again to put the printer ONLINE.

The length of the scan profile printed depends on the *ODV2D > Diagnostics > Profile Horiz Mag* setting.

The scan profile will print either a 1.5" wide or a 3" wide graph depending on the *Media > Image > Label Width* setting. (Label widths less than 4" print the smaller 1.5" wide profile.)

IMPORTANT: Printing is done in continuous mode without considering media gap/marks. Use continuous media or else the scan profile may distort at the media gap/marks.

Figure 4 shows two sample scan profile graphs. The left uses a **Profile Horiz Mag** of 1 (default) and the right uses a **Profile Horiz Mag** of 2. These graphs only show the profile of actual bar code data. The dashed lines represent the 90% and 10% marks. You can use these to help set the gain and offset (if necessary).

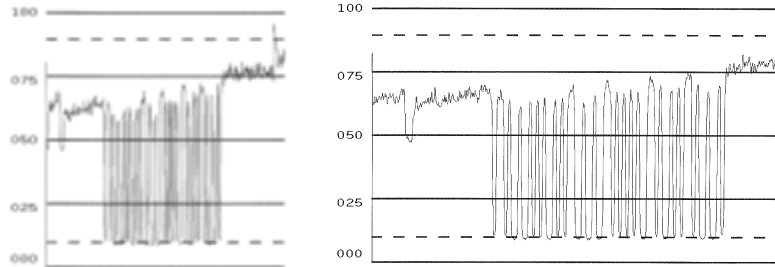


Figure 4 Sample Scan Profile (Profile Horiz Mag 1 & 2)

Profile Horiz Mag

| ODV2D > Diagnostics > Profile Horiz Mag | |
|--|---|
| This menu item selects the horizontal magnification for printing the scan profile. This allows you to zoom in on the profile. Magnification values are multiples of the scan profile length. | |
| Minimum | 1 |
| Maximum | 4 |
| Factory Default | 1 |

Print Settings

This is an executable menu item that reads and prints the settings used by the ODV2D.

The response received from the ODV2D after sending the ~DV (retrieves version), ~HT (retrieves hardware settings), and ~PT8 (retrieves parameter settings) commands are printed. Use the printout to view all the active settings the validator is using and to determine if there is any invalid setting which may be causing problems. Table 2 is a sample printout (separated into different columns).

Table 3 Print Settings

| ~DV Response | ~HT Response | ~PT8 Response |
|--|---|---|
| ODV2D SYSTEM: P300356-V1.16A ODV2D APP: P300398-V1.16D ODV2D DSP: P300358-V1.16A | SerialPort=/dev/ttyS1 TopRow=1018 Aperture=1 DSPDebug=0 EnableCalibrationGain=1 EnableCalibrationGrid=1 CalibrationGridParallax=2.2 CalibrationGridStretch=-1 FinderThreshold=45 PixelGainScale=86 PixelGainoffset=3 LineSyncsPerFrame=3 CalibrationGainCount=10 CameraAnalogGain=6 CenterPosition=2455 PixelSize=2 SerialNumber=30dv21725006 | Full Frame RMin=6 RMax=92 Scale=90.956 Offset=7.02174 |

Graphics Info

| ODV2D > Diagnostics > Graphics Info | |
|--|---|
| This menu item will save the barcode analysis of graphics data onto an SD card (if present) or within the Flash File System, named Cfind_XXX.BMP . This file is a BMP graphics which shows how the graphic elements were interpreted and can be useful to determine if the barcode was properly identified. | |
| When the menu is set to zero, no analysis will be saved. When the menu is set above zero, that number of label analyses will be saved onto the SD card (if present) or Flash File System. As the labels are printed, this menu will decrement automatically back to zero. | |
| Minimum | 0 |
| Maximum | 5 |
| Default | 0 |

Statistics Submenu

Clear Data

| ODV2D > Statistics > Clear Data |
|---|
| The ODV2D reports on all bar codes it detects since the last data reset. For example, you print a large batch of labels with bar codes and then print a validator report. Then you print another batch of labels with bar codes and print another report. The report will contain information on both batch jobs. However, if you reset the validator data between batch jobs, the second report will only contain information on the second batch job. |
| This executable menu will clear all the statistics shown in this Statistics submenu. |

Good Barcodes

ODV2D > Statistics > Good Barcodes

The number of bar code reports sent from the ODV2D since the last Clear Data command.

Good Forms

| ODV2D > Statistics > Good Forms |
|--|
| The number of good (non-overstruck) forms printed since the last Clear Data command. |

Overstrike Forms

| ODV2D > Statistics > Overstrike Forms |
|---|
| The number of forms containing a bar code that fell below the minimum acceptable level since the last Clear Data command. |

Average BWD

| ODV2D > Statistics > Average BWD |
|--|
| The average of all Bar Width Deviations reported since the last Clear Data command, shown as a percentage. |

Last BWD

| ODV2D > Statistics > Last BWD |
|--|
| The Bar Width Deviation included in the most recent report received from the validator, shown as a percentage. |

IMPORTANT A bar code's Bar Width Deviation is determined by comparing the bar width the ODV2D expects to the bar width that is actually printed. For example, if the bar width is printed exactly as the validator expects, the BWD is 0%. However, if the bar width as printed is 25% wider or narrower than the validator expects it to be, it reports a BWD of 25%.

Validator F/W

| ODV2D > Statistics > Validator F/W |
|--|
| Shows the firmware version installed in the ODV2D. |

Serial Number

| ODV2D > Statistics > Serial Num. |
|---|
| Shows the serial number of the ODV2D installed. |

IP Address

| ODV2D > Statistics > IP Address |
|---|
| Shows the IP Address of the Ethernet diagnostic port on the ODV. The Ethernet is accessible from the side of the ODV (needs to remove cover plate to expose). |

MAC Address

| ODV2D > Statistics > MAC Address |
|---|
| Shows the MAC Address of the Ethernet diagnostic port on the ODV. This is the Manufacturer's assigned number and is unique for each ODV2D. The MAC Address is stored with the SD memory card. |

Setup Considerations

There are several factors which contribute to successful bar code validation, including printer speed, on-demand print settings, calibration, and ambient light. The following sections describe how to ensure your ODV2D validator is scanning and reporting properly.

Note on Energy Star

The menu *System > Energy Star > Pwr Saver Active* is by default enabled and *System > Energy Star > Pwr Saver Time* is set to 5 minutes. Because Energy Star requires the ODV to be completely shut down, the time to revive the ODV2D can be more than 30 seconds which can be challenging for on-demand applications. The user is recommended to either increase the *Pwr Saver Time* or disable *Pwr Saver Active* menus if the revival time is not satisfactory.

Print Speed Limits

The print speed limits of 2~8 IPS are based on steady paper motion and the ability of the ODV2D camera system to gather and process the data effectively in real-time. If your application is not acting reliably, there are several possible factors including the reflectivity of the media and/or ambient light. Users should decrease the print speed in these situations to see if this improves performance.

NOTE: The speed is limited to 8 IPS for 1D picket fence and 2-D barcodes \geq 13mil and to 6 IPS for 1D ladder or 2-D barcodes $<$ 13mil. The speed will be automatically reduced depending on the label content and remain there.

Page Size and Barcode Limits

The camera system of the ODV2D gathers an entire label image during processing and is limited to 24" labels in *Media > Image > Label Length* due to memory and overhead requirements. In addition, no more than 50 codes can be processed in each label.

Minimum Bar Width

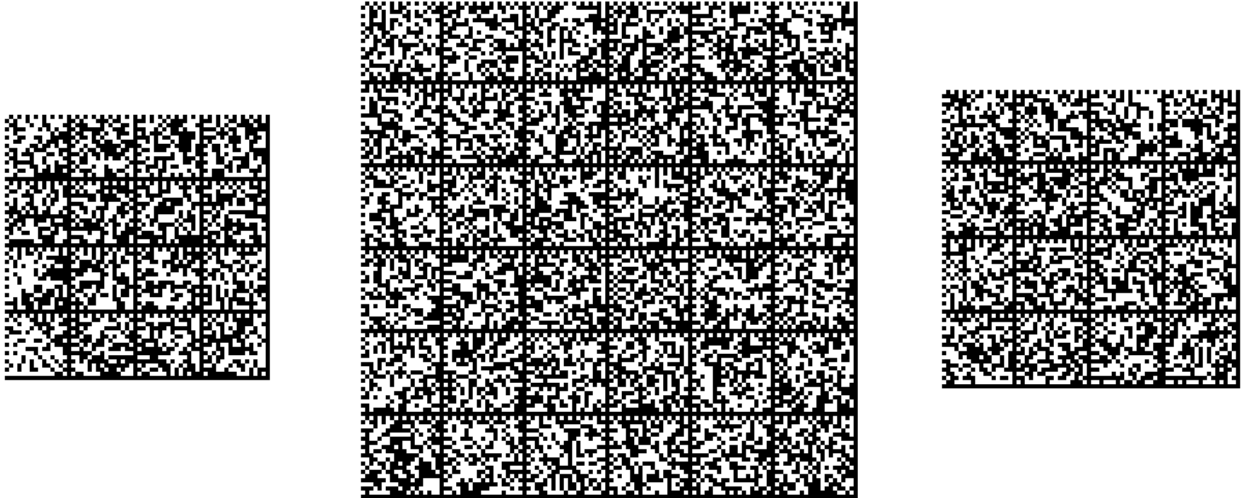
The barcode width "X" dimension must be at least 10-mil (0.010 inches) for use on the 4-inch models, 13.3-mil (0.0133 inches) for 6-inch 300 dpi model or 15-mil (0.015 inches) for the 6-inch 203 dpi model. This is required to provide full ISO grading capabilities. Note: smaller dimensions may be read, but cannot be accurately graded.

Minimum Barcode Height

The barcode height of 1D codes must be at least 0.10 inches. This is required to get the necessary area to do a proper ISO validation. The print speed is not a limiting factor in this requirement.

Data Matrix Complexity

While the ODV2D is capable of run-time analysis of complex barcodes, there are limitations based on the size of the minimum element combined with the level of data. Barcodes below are examples of 10-mil barcodes that are extremely complex and therefore may not read well for all medias, speeds, and print intensities.



On-Demand Printing

For each bar code to be successfully validated, the entire bar code must pass completely under the beam, even when the printer is set up for on-demand printing. In cases where the bar code is close to the bottom of a label and the printer is in an on-demand printing mode, the printer automatically pushes the label past the scanning beam. Once the bar code is validated, the printer retracts the label back to be cut or torn off.

Because the printer must push out and then retract labels in on-demand printing modes, the extra movements slow the printing process. You can avoid this by adjusting the form so that the bar code appears early enough on the form so that it will pass completely under the scanning beam during normal printing. This may involve rotating the form or moving the bar code to a different position on the form.

Checking the Firmware Revision Number

For troubleshooting purposes, you may need to reference the ODV2D firmware revision number. This can be found in two different places within the Settings section:

- ODV2D > Statistics > Validator F/W.
- Tools > About > Validator F/W.

PTX_SETUP Control

There are several PTX_SETUP commands that configure the ODV2D symbologies and orientations that will be processed or ignored, including the ability to skip processing entire labels.

PTX_SETUP commands have the following format:

(SFCC)PTX_SETUP

Command-Sub Command; Value

PTX_END

The SFCC value by default is hex 21 (!) and the entire set of PTX_SETUP commands can be found in the T8000 Administrator's Manual. Table 3 lists those commands.

Table 4 PTX_SETUP Commands for ODV2D

| Command | Sub-Command | Parameter | Description |
|---------|-----------------|--|---|
| ODV | GRAPHICS | <i>ON or 1</i> <i>OFF or 0</i> | When enabled, search graphics within the job for barcodes. Otherwise, ignore the graphics and only process the barcode command from the emulations. |
| | ORIENT | <i>ALL</i> <i>PICKET</i> <i>LADDER</i> | Choose the orientations of the barcodes to process. |
| | SKIP | <i>0 = OFF</i> <i>1-9999 = #</i> <i>> 9999 = ON</i> | Skip a certain number of labels from ODV2D processing. If zero, no labels will be skipped (ignored). If 1-9999, this number of labels will be skipped. Numbers > 9999 will result in indefinite skipping of labels. |
| | CODE39 | <i>ON or 1</i> <i>OFF or 0</i> | When enabled, Code 39 barcodes will be processed. Otherwise, they will be ignored on the label. |
| | CODE128 | <i>ON or 1</i> <i>OFF or 0</i> | When enabled, Code 128 barcodes will be processed. Otherwise, they will be ignored on the label. |
| | INT2/5 | <i>ON or 1</i> <i>OFF or 0</i> | When enabled, Interleaved 2/5 barcodes will be processed. Otherwise, they will be ignored on the |
| | CODE93 | <i>ON or 1</i> <i>OFF or 0</i> | When enabled, Code 93 barcodes will be processed. Otherwise, they will be ignored on the label. |
| | CODABAR | <i>ON or 1</i> <i>OFF or 0</i> | When enabled, Codabar barcodes will be processed. Otherwise, they will be ignored on the label. |

| Command | Sub-Command | Parameter | Description |
|---------|-------------------|-----------------------------------|---|
| | UPC/EAN | <i>ON or 1</i> <i>OFF or 0</i> | When enabled, UPC and EAN barcodes will be processed. Otherwise, they will be ignored on the label. |
| | PDF417 | <i>ON or 1</i> <i>OFF or 0</i> | When enabled, PDF417 barcodes will be processed. Otherwise, they will be ignored on the label. |
| | DATAMATRIX | <i>ON or 1</i> <i>OFF or 0</i> | When enabled, Data Matrix barcodes will be processed. Otherwise, they will be ignored on the label. |
| | QR | <i>ON or 1</i> <i>OFF or 0</i> | When enabled, QR barcodes will be processed. Otherwise, they will be ignored on the label. |
| | | | |
| | | | |

IMPORTANT When PTX_SETUP commands are sent, they will change the front panel menus (if available) in the Section “Symbology Submenu”.

Grading Parameters

Grading A-F

Several ISO and traditional parameters are individually graded per the ISO and ANSI specifications, and these individual grades are combined to make an overall ISO-compliant grade. The ODV2D will always fail any barcodes which have grades less than or equal to the value specified in the Overall Grade menu. Instead of grade letters (A-F), numbers are used to allow for more resolution. ISO-compliant letter grades correspond to numerical grades as shown in the table below.

Table 5 Grading Numerical Range

| Overall Grade | Description |
|----------------------------|--|
| 3.5 or better A | Grade A barcodes should scan easily first time with most scanning equipment. The goal should be to produce this quality codes. |
| 2.5 – 3.5 B | Codes of this quality may read after a single scan. If a second scan is required, the probability of success is very high. |
| 1.5 – 2.5 C | This is the minimum quality level for an acceptable barcode. Re-scanning is necessary to get a successful read. |
| 0.5 – 1.5 D | This grade is only acceptable for ITF-14 bar codes printed on to fiberboard. |
| 0.4 – 0.0 F | This grade is unacceptable |

ISO versus Non-ISO

In terms of grading the form, there are two different modes available based on the menu setting *ODV2D > Grading > Grading Mode*:

- ISO – In this mode, all grading parameters are based on ISO standards. Only the **Overall Grade** menu is user adjustable to generate a fault. When this mode is selected all other menus in this section are hidden and reset. The grading results are then based on the ISO specifications.
- Non-ISO – This mode allows the user to set custom failure thresholds on individual barcode quality parameters. Changing individual quality parameters may lead to non-ISO standard grading. It is recommended that only users that understand both the ISO standards and the end user barcode quality requirements change any setting that affects the barcode quality parameters. All quality parameter menus are visible and user adjustable in this mode

Parameter Applicability

Barcode verifiers use parameters dictated by industry standards for grading and reporting barcodes. The table below shows a summary of the industry standard parameters used for barcode grading as shown in Table 5.

Table 6 Configurable Analysis Parameters

| Parameter | 1D | 2D | |
|-----------------|----|---------|--------|
| | | Stacked | Matrix |
| Modulation | x | x | x |
| Symbol Contrast | x | x | x |
| Overall Grade | x | x | x |
| Rmin | x | x | |
| ECmin | x | x | |
| Defects | x | x | |
| Decodability | x | x | |

| | | | |
|------------------------------|--|---|---|
| Fixed Pattern Damage | | | x |
| Axial Nonuniformity | | | x |
| Grid Nonuniformity | | | x |
| Unused Error Correction Code | | x | x |

NOTE: Stacked Barcodes include PDF417. Matrix barcodes include DataMatrix, QR, and Aztec.

Calculations

The ODV2D follows the specified algorithm defined in the ANSI X3.182 specification for determining the Overall Grade based on an average. Although it is not defined, the validator truncates the result of all analysis parameters averages for a slightly stricter grading.

A side effect of the ANSI specified algorithm is that the Overall Grade may be lower than any of the averaged analysis parameters. This occurs because the Overall Grade is based on the lowest grade on any scan converted to a single digit grade (A to F, 4 to 0) which is then averaged. This usually occurs when a single analysis parameter has a value just above or just below the Overall Grade.

Example

The Decodeability value of 51 displays as B, but the Overall Grade displays as C.

The bar code was scanned five times: three scans had values of 0.49 (grade C) and two scans had values of 0.54 (grade B).

The Decodeability grading calculation is:

$$(3 \times 0.49) + (2 \times 0.54) = 2.55$$

$$2.55 \div 5 = 0.51 \text{ (grade B)}$$

The Overall Grade calculation is:

$$(3 \times 2.0) + (2 \times 3.0) = 12$$

$$12 \div 5 = 2.4 \text{ (grade C)}$$

Also, with certain combinations of multiple analysis parameters and possibly the truncation used on the analysis parameter's average, the Overall Grade may be higher than an individual analysis parameter grade.

Example

The Decodeability value of 48 displays as C, but the Overall Grade displays as B.

The bar code was scanned five times: four scans had values of 0.51 (grade B) and one scan had a value of 0.40 (grade C).

The Decodeability grading calculation is:

$$(4 \times 0.51) + (1 \times 0.40) = 2.44$$

$$2.44 \div 5 = .49 \text{ (grade C)}$$

The Overall Grade calculation is:

$$(4 \times 3.0) + (1 \times 2.0) = 14$$

$$14 \div 5 = 2.8 \text{ (grade B)}$$

Bar Code Failures

The ODV2D tells the printer to announce a fault condition in two situations:

- When the validator detects a bad bar code
- When the validator detects no bar code where it expects to find one.

How the printer reacts to these faults is determined by the printer's configuration settings, as described in this section.

Process for 1-D Barcode Analysis

The following flow chart in Figure 5 is an overview of how the ODV2D performs the 1-D barcode analysis.

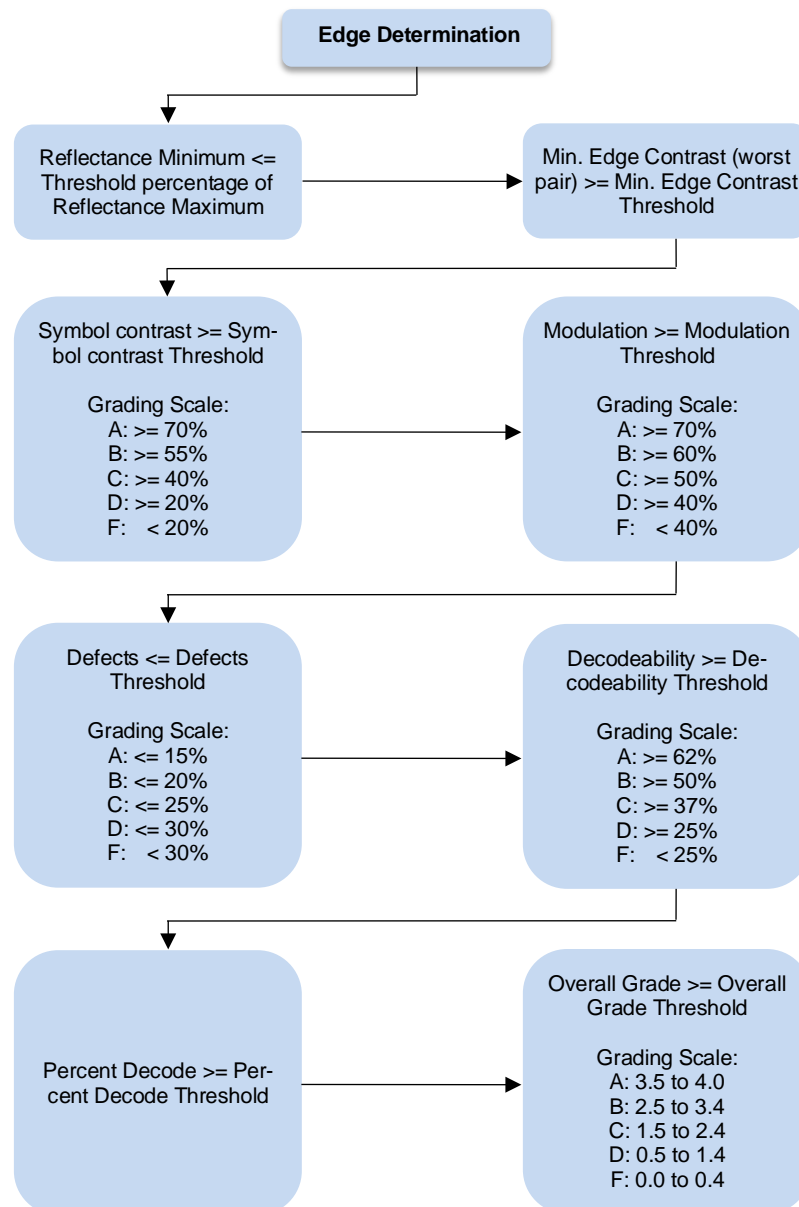


Figure 5 1-D Barcode Analysis

Bad Bar Code Error Detection

The ODV2D examines every bar code that passes under the beam and sends an analysis report to the printer. If a bar code is reported to have failed to meet any of the acceptance criteria, an error condition is reported. How the printer then reacts is described in “Validator Action (Error Action)”.

Missing Bar Code Error Detection

A bar code may print so poorly that the ODV2D cannot detect it, and the printer does not receive an analysis report for the code. To catch this problem, the printer tracks the position of the last label printed and knows when it should have completely passed the beam. It can then compare the number of bar code analysis reports it expected to the number it received. If the printer does not receive enough bar code reports, it enters an error condition. How the printer then reacts is described in “Validator Action (Error Action)”.

The number of bar codes expected is determined one of two ways:

- If Auto is selected for the *ODV2D > Control > Number of Codes* parameter, the printer compares the number of bar code commands it receives from the software to the number of analysis reports it receives from the validator.
- You can set the number of bar codes generated by a bitmapped image that the printer should expect per form by selecting a value in the *ODV2D > Control > Number of Codes* parameter. **This option should not be used (even with graphics) unless the default “Auto” selection is not working.**


3 Troubleshooting

Validation Demo Page

The 2-D bar code validation demo page allows you to test or demonstrate proper validator operation without a host computer. This page contains several bar code symbologies (including 2-D) and is recommended for 4x6 labels.

NOTE: If the menu *Media > Image > Label Width* or *Media > Image > Label Length* or *Media > Image > Label Width* is set to something other than 4" or 6", respectively, then some of the barcodes may not print. This does not invalidate the test but does not allow the entire scan width to be verified. If the label dimensions are too small, no barcodes will be printed.

To print and validate the bar code validation demo page:

1. Load the factory default configuration. (Refer to the printer's *Administrator's Manual*.)
2. Set *ODV2D > Control > Validator Active* to "Enable".
3. Set *Sensors > Control > Gap/Mark Sensor* to "Gap".
4. Load media.
5. Using *Sensors > Calibrate > Auto Calibrate* or by selecting  in the Home screen, run Auto Calibrate for proper gap sensing.
6. Enter the menu *Tools > Print Tests > Run Tests*. If the panel is locked, press the UP+DOWN ARROW keys simultaneously to unlock.
7. Find the printer test named "Barcode Demo 2D" and press the ENTER key.
8. The printer will return ONLINE automatically and print one demo page.
9. To simulate a bad bar code reading, block the scanning beam with an opaque object while the bar code moves under the beam. When you block the beam, the ODV2D will generate a reading error and will perform a default error action. The default setting for *ODV2D > Control > Validator Action* is "Retry Form". Using the factory default settings, the printer will pull the label with the bad barcode back, overstrike the entire label, reprint the barcodes on the next label, and then stop.
10. Press the PAUSE key to take the printer OFFLINE.
11. Lock the panel again using the UP+DOWN ARROW keys.
12. Press the PAUSE key to place the printer back ONLINE.

Error Messages

The ODV2D can detect several errors. When one of these errors occurs, the validator alerts the printer to perform the currently selected error action (see "Validator Action (Error Action)") and show the appropriate error message on the printer display. Validator error messages are explained in Table 6.

Table 6. Message List

| Displayed Message | Solution/Explanation |
|--|---|
| <p>Bar code fails Job has errors</p> | <p>This message appears when at least one label in a batch of labels has a data validation error and Validator Action is set to Grade&Report.</p> <ol style="list-style-type: none"> 1. Press PAUSE to clear the message. 2. Manually scan all the bar codes in the label batch, then reprint the bad labels |
| <p>Bar Code Improper Data Format</p> | <p>Data validation error: the bar code is not properly encoded. For example, a check sum is incorrect, a required number of characters is not met, or the required terminator characters are not included. This problem is almost always caused by incorrect form or host application design.</p> <ol style="list-style-type: none"> 1. Fix the application so it sends data in the correct bar code format. |
| <p>Bar code quiet zone too small</p> | <p>Data validation error: the blank zone(s) left or right of the bar code is not big enough to meet the minimum requirement. Typically, this occurs in forms where bar codes are placed too close to other elements, the bar code is too close to an edge of the media, or the media's position is shifting. The minimum quiet zone on each end of the bar code should be ten times the minimum element width or 1/4 inch, whichever is greater. In addition, between bar codes, the validator requires a minimum distance of 20 times the minimum element width or 1/2 inch, whichever is greater.</p> <ol style="list-style-type: none"> 1. Fix the application. 2. Disable <i>ODV2D > Control > Quiet Zone</i> menu. |
| <p>Calibration warning</p> | <p>The validator has detected that it needs calibration. This message is a reminder and does not halt printing.</p> <ol style="list-style-type: none"> 1. Press PAUSE to clear the message. Calibrate the validator. See "Calibration". |
| <p>Checksum Failure</p> | <p>The bar code data fails the checksum check or is missing the checksum digit.</p> <ol style="list-style-type: none"> 1. Verify that the checksum digit exists in the bar code and that it is the correct value. |

Table 6. Message List

| Displayed Message | Solution/Explanation |
|---|--|
| <p>Contrast too low Check media</p> | <p>Data validation error: the contrast between bars and spaces is not sufficient. This can be caused by too little heat in the thermal transfer or by use of colored media or ribbons.</p> <ol style="list-style-type: none"> 1. Increase <i>Media > Image > Print Intensity</i> or reduce <i>Media > Speed > Print Speed</i> by menu or host software, change media, or set <i>ODV2D > Grading > Symbol Contrast</i> to 0% (to disable it). |
| <p>ODV COMM ERR See Manual</p> | <p>Communication error between printer and online data validator (ODV).</p> <ol style="list-style-type: none"> 1. Cycle power. 2. If the problem persists, contact your authorized customer service representative. |
| <p>ODV Error Data Mismatch</p> | <p>The data that was encoded by the emulation is different than the data that the validator reported.</p> <ol style="list-style-type: none"> 1. Adjust <i>Media > Image > Print Intensity</i> and <i>Media > Speed > Print Speed</i> menu or via host software. 2. Adjust the printhead pressure. (Refer to the Administrator's Manual.). |
| <p>ODV Error: 35 Data Invalid</p> | <p>The ODV2D has not been properly aligned or calibrated during installation. The full alignment and calibration routine must be performed. Contact your Printronix Service Representative or provider for more information about the initial setup.</p> |
| <p>Overall Grade Fail</p> | <p>Overall data validation failure: decodability, percent decode, defects, modulation, EC Min, Rmin, and/or Symbol Contrast.</p> <ol style="list-style-type: none"> 1. Press PAUSE to clear the message. 2. Adjust the parameter that is causing the failure. To see which parameter is failing, run a Scan Report (page 42). 3. Lower the <i>ODV2D > Grading > Overall Grade</i> to a point where the worst parameter grade will be above the Overall Grade threshold. |

Table 6. Message List

| Displayed Message | Solution/Explanation |
|--|--|
| <p>Poor scanning Check heat&head</p> | <p>Data validation failure: decodability. The difference between wide and narrow elements is too close for the validator to reliably discern. This usually indicates an improperly set heat/speed/pressure combination or the loss of a printhead element.</p> <ol style="list-style-type: none"> 3. Adjust <i>Media > Image > Print Intensity</i> and <i>Media > Speed > Print Speed</i> menu or via host software. 4. Adjust the printhead pressure. (Refer to the Administrator's Manual.). |
| <p>Poor scanning Check media</p> | <p>Data validation failure: percent decode. The validator detected gross inconsistencies within the height of the bar code. These types of failures are likely attributed to large blemishes within the bar code, caused by ribbon wrinkle or debris on media.</p> <ol style="list-style-type: none"> 1. Check for a wrinkled ribbon or debris on media. Roll wrinkled area onto take-up spindle. 2. Adjust the printhead pressure blocks. (Refer to the Administrator's Manual.). |
| <p>Poor scanning Inspect head</p> | <p>Data validation failure: hardware defect. The validator detected unexpected dark spots in spaces or light spots in bars. This usually indicates a poor ribbon/media combination, a dirty printhead, or a burned pixel.</p> <ol style="list-style-type: none"> 1. Check that paper and ribbon are clean, unwrinkled, and installed correctly. 2. Clean the printhead. 3. If message reappears, replace the printhead. |
| <p>Speed Exceeds Validator Limit</p> | <p>Print Speed is set above the maximum allowed for bar code printing by the validator as the Power-Up configuration with the validator option installed. An attempt was made to set <i>Media > Speed > Print Speed</i> above the maximum allowed via menu or host software.</p> <p>Speed is limited to 2-8 IPS. In the case ladder barcodes are present, the speed will be reduced automatically to 6 IPS and remain there.</p> |

Table 6. Message List

| Displayed Message | Solution/Explanation |
|--|--|
| <p>Unscannable: xx Missing Codes</p> | <p>Data validation error: missing bar code. An expected bar code is missing or was printed so poorly that the validator cannot detect it.</p> <p>xx = number of bar codes missing on the form that caused the error.</p> <ol style="list-style-type: none"> 1. Check that paper and ribbon are clean, unwrinkled, and installed correctly. 2. Run a print job and check that the validator beam is not obstructed; remove obstructions as necessary. 3. Run a print job and check that the READ LED flashes as bar codes exit the printer. If the READ LED does not flash, cycle power and run the job again. If the READ LED does not flash, inspect the cables and the cable connections. If the cables are undamaged and the connections are good, replace the validator. 4. If using bitmapped bar codes, set <i>ODV2D > Control > Number of Codes</i> to the number of codes per form (not Auto). 5. Adjust <i>Media > Image > Print Intensity</i> and <i>Media > Speed > Print Speed</i> in the menu or via host software. 6. Make sure that all expected bar codes are printing. If the physical label is too small, the image may be clipped. 7. Press PAUSE to clear the message. 8. Execute the <i>ODV2D > Statistics > Clear Data</i> function. |
| <p>Validator not communicating</p> | <p>The <i>ODV2D > Control > Validator Active</i> is enabled in the menu, but when the printer was first powered up it could not communicate with it. Another possibility is the validator was connected to the printer and then later removed.</p> <ol style="list-style-type: none"> 1. Check that the validator signal cable is securely connected to the validator unit. 2. Disable <i>ODV2D > Control > Validator Active</i>. Save this setting in the <i>Configs > Control > Power-Up</i> configuration and reboot the printer. |

Table 6. Message List

| Displayed Message | Solution/Explanation |
|-------------------------------|--|
| VERIFIER CODE INCOMPATIBLE | <p>The validator code is not compatible with the printer firmware code. This is the case when the feature capability does not match.</p> <ol style="list-style-type: none">1. Contact Customer Service for the latest printer firmware and validator firmware.2. Upgrade the validator firmware first. If the error message goes away, then no more needs to be done.3. If the incompatible message persists, then upgrade the printer firmware as described in the <i>T8000 Administrator's Manual</i>. |

If you are having problems with the validator, consult Table 7 for a list of symptoms and possible solutions.

Table 7. Troubleshooting the Validator

| Symptom | Solution |
|--|--|
| The ODV2D beam does not come on. | <ol style="list-style-type: none"> 1. Make sure the power/data cable is plugged into the ODV2D and the controller board on the printer. 2. Make sure the validator has not been disabled in the <i>ODV2D > Control > Validator Active</i> menu. See “Enabling and Disabling the Validator”. 3. Print a bar code validation demo page (page 12). 4. Call your service representative if the problem persists. |
| The ODV2D beam does not cover the entire width of the labels being printed. | There is something wrong with the LED array. Call your service representative if the problem persists. |
| The printer pauses after scanning each label. | For complex labels with 2-D or several 1-D barcodes, the printer might be waiting for the ODV2D to complete analysis. Try reducing the print speed to minimize pausing. |
| Printing less than 10 mil (0.010 inch) x-dimension width bar codes constantly causes error messages. | The validator does not recognize x-dimensions as smaller than 10 mil. If you must print bar codes this size, disable the validator to prevent error reports. See “Enabling and Disabling the Validator”. |
| The printed labels look clean, but the validator is still reporting an error message. | The validator glass may be dirty, distorting the report results. Power down the printer and clean the glass using a household glass cleaner and a dry, lint-free cloth. |

Table 7. Troubleshooting the Validator

| Symptom | Solution |
|---|---|
| The printed bar codes are causing error conditions. | <p>There are several factors which could be causing validation errors:</p> <ul style="list-style-type: none">• The ODV2D is not properly aligned with the printer. See "Calibration".• Make sure the entire bar code passes completely under the scanning beam.• The media is not falling straight down when exiting the print path thereby distorting the images taken by the camera.• The validator and printer are not properly communicating. Test the validator operation without using a host. See "Bar Code Validation Demo Page".• Bar code width. The validator can recognize x-dimensions as narrow as 10 mils.• Bar code size. A minimum height of 0.10 inch is required for validation. If problems persist, increase the bar code height. |

Table 7. Troubleshooting the Validator

| Symptom | Solution |
|--|--|
| <p>The printed bar codes are causing error conditions. (continued)</p> | <ul style="list-style-type: none"> • Bar code type. The validator only recognizes the following linear, picket fence bar codes: Codabar, Code 39, Code 93, Code 128, Interleaved 2 of 5, and UPC/EAN, PDF417, Data Matrix, and QR. • Bar code spacing. The validator requires a minimum distance of 1/2 inch or 20 times the minimum element width, whichever is greater, between bar codes. • Printer speed. See “Print Speed Limits”. If problems persist, decrease the <i>Media > Speed > Print Speed</i>. • Be sure the bar code is not printing on the extreme edges of the label. • Clean the printhead. See “Cleaning” in the <i>Administrator’s Manual</i>. • Check that paper and ribbon are clean, unwrinkled, and installed correctly. • Check the number of bar codes being validated concurrently. The validator can track the performance of up to 50 barcodes at one time. |

If the problem with the printer is not fixed by one of these troubleshooting methods, call your authorized service representative or the Printronix Customer Support Center. See “Printronix Auto ID Customer Support Center”.

4 *Maintenance*

The ODV2D is a self-contained unit that requires only periodic cleaning. Every so often, power down the printer and use a household glass cleaner and a dry, lint-free cloth to clean the glass.

There are no field serviceable items inside the validator imaging unit. It is sealed with tamper-evident tape at the factory. If the tape has been removed, the words "VOID" will appear indicating that the Product Warranty is now VOID.



A *Addendum*

Software License Agreement

CAREFULLY READ THE FOLLOWING TERMS AND CONDITIONS BEFORE USING THIS PRINTER. USING THIS PRINTER INDICATES YOUR ACCEPTANCE OF THESE TERMS AND CONDITIONS. IF YOU DO NOT AGREE TO THESE TERMS AND CONDITIONS, PROMPTLY RETURN THE PRINTER AND ALL ACCOMPANYING HARDWARE AND WRITTEN MATERIALS TO THE PLACE YOU OBTAINED THEM, AND YOUR MONEY WILL BE REFUNDED.

Definitions.

“Software” shall mean the digitally encoded, machine-readable data and program. The term “Software Product” includes the Software resident in the printer and its documentation. The Software Product is licensed (not sold) to you, and Printronix Auto ID Technology, Inc. either owns or licenses from other vendors who own, all copyright, trade secret, patent and other proprietary rights in the Software Product.

License.

1. Authorized Use. You agree to accept a non-exclusive license to use the Software resident in the printer solely for your own customary business or personal purposes.
2. Restrictions.
 - a. To protect the proprietary rights of Printronix Auto ID Technology, Inc., you agree to maintain the Software Product and other proprietary information concerning the typefaces in strict confidence.
 - b. You agree not to duplicate or copy the Software Product.
 - c. You shall not sublicense, sell, lease, or otherwise transfer all or any portion of the Software Product separate from the printer, without the prior written consent of Printronix Auto ID Technology, Inc.
 - d. You may not modify or prepare derivative works of the Software Product.
 - e. You may not transmit the Software Product over a network, by telephone, or electronically using any means; or reverse engineer, decompile or disassemble the Software.
 - f. You agree to keep confidential and use your best efforts to prevent and protect the contents of the Software Product from unauthorized disclosure or use.
3. Transfer. You may transfer the Software Product with the printer, but only if the recipient agrees to accept the terms and conditions of this Agreement. Your license is automatically terminated if you transfer the Software Product and printer.

Limited Software Product Warranty

Printronix Auto ID Technology, Inc. warrants that for ninety (90) days after delivery, the Software will perform in accordance with specifications published by Printronix Auto ID Technology, Inc. Printronix Auto ID Technology, Inc. does not warrant that the Software is free from all bugs, errors and omissions.

Remedy

Your exclusive remedy and the sole liability of Printronix Auto ID Technology, Inc. in connection with the Software is replacement of defective software with a copy of the same version and revision level.

Disclaimer of Warranties and Limitation of Remedies

1. THE PARTIES AGREE THAT ALL OTHER WARRANTIES, EXPRESS OR IMPLIED, INCLUDING WARRANTIES OF FITNESS FOR A PARTICULAR PURPOSE AND MERCHANTABILITY ARE EXCLUDED.
Printronix Auto ID Technology, Inc. does not warrant that the functions contained in the Software will meet your requirements or that the operation of the Software will be uninterrupted or error free. Printronix Auto ID Technology, Inc. reserves the right to make changes and/or improvements in the Software without notice at any time.
2. IN NO EVENT WILL PRINTRONIX AUTO ID TECHNOLOGY, INC. BE LIABLE FOR LOST PROFITS, LOST DATA, BUSINESS INTERRUPTIONS, OR ANY OTHER DIRECT, INDIRECT, INCIDENTAL OR CONSEQUENTIAL DAMAGES ARISING OUT OF THE USE OF OR INABILITY TO USE THIS PRODUCT, EVEN IF PRINTRONIX AUTO ID TECHNOLOGY, INC. HAS BEEN ADVISED OF THE POSSIBILITY OF SUCH DAMAGES, OR ANY DAMAGES CAUSED BY THE ABUSE OR MANIPULATION OF THE SOFTWARE. SOME STATES DO NOT ALLOW THE EXCLUSION OR LIMITATION OF LIABILITY FOR CONSEQUENTIAL OR INCIDENTAL DAMAGES, SO THE ABOVE LIMITATION MAY NOT APPLY TO YOU.
3. Printronix Auto ID Technology, Inc. will not be liable for any loss or damage caused by delay in furnishing a Software Product or any other performance under this Agreement.
4. Our entire liability and your exclusive remedies for our liability of any kind (including liability for negligence except liability for personal injury caused solely by our negligence) for the Software Product covered by this Agreement and all other performance or nonperformance by us under or related to this Agreement are limited to the remedies specified by this Agreement.
5. California law governs this Agreement.

Termination of License Agreement

This License shall continue until terminated. This license may be terminated by agreement between you and Printronix Auto ID Technology, Inc. or by Printronix Auto ID Technology, Inc. if you fail to comply with the terms of this License and such failure is not corrected within thirty (30) days after notice. When this License is terminated, you shall return to the place you obtained them, the printer and all copies of the Software and documentation.

U.S. Government Restricted Rights

Use, duplication or disclosure by the Government is subject to restrictions as set forth in the Rights in Technical Data and Computer Software clause at FAR 242.227-7013, subdivision (b) (3) (ii) or subparagraph (c) (1) (ii), as appropriate. Further use, duplication or disclosure is subject to restrictions applicable to restricted rights software as set forth in FAR 52.227-19 (c) (2).

Acknowledgement of Terms and Conditions

YOU ACKNOWLEDGE THAT YOU HAVE READ THIS AGREEMENT, UNDERSTAND IT, AND AGREE TO BE BOUND BY ITS TERMS AND CONDITIONS. NEITHER PARTY SHALL BE BOUND BY ANY STATEMENT OR REPRESENTATION NOT CONTAINED IN THIS AGREEMENT. NO CHANGE IN THIS AGREEMENT IS EFFECTIVE UNLESS WRITTEN AND SIGNED BY PROPERLY AUTHORIZED REPRESENTATIVES OF EACH PARTY. BY USING THIS PRINTER, YOU AGREE TO ACCEPT THE TERMS AND CONDITIONS OF THIS AGREEMENT.

Open Source Acknowledgements

The ODV2D version V2 and version V3e run several components on a Linux based system that include proprietary code for the ODV2D application along with many open source components. This section details which open source components are used along with the license information. Table 7 lists the various open source components used by these versions.

Table 7 Open Source Components

| Package | Version | Description | Mods | License |
|--------------------------------|--------------------|---|------|------------|
| Angstrom Linux | 2.6.32 | The Angstrom Linux operating system. | Y | GPL 2.0 |
| Linux | 4.19.94 | The Linux operating system. | Y | GPL 2.0 |
| Linux Boot Loader (U-Boot) | 2011.06 2019.01 | Loads the operating system during boot. | Y | GPL 2.0+ |
| Aptina Video Driver | Unknown | Controls the ODV2D camera. | Y | GPL 2.0 |
| Busybox | 1.31.1 | Linux communications interface | N | GPL 2.0 |
| GNU C Libraries | 2.25 | Dynamically linked C/C++ Libraries | N | LGPL 3.0 |
| uClibc-ng - Embedded C library | 1.0.32 | C library for embedded Linux systems | N | LGPL 2.1 |
| OpenCV | 2.4.13 | Optimized Image Processing Library | Y | BSD |
| OpenCV3 | 3.4.9 | Optimized Image Processing Library | N | BSD |
| ZXing Barcode Reader | 3.3.0-1.03E | Barcode Decoding Library | Y | Apache 2.0 |
| Mongoose Web Server | 3.1 | Enables a webpage for Diagnostics | Y | MIT |
| TI-IPC | 3.50.04.08 | Inter-processor communications | N | BSD |

For packages that are GPL or LGPL and required modifications (see Column “Mods” in Table 7), Printronix Auto ID provides all changes on the company’s website to allow the public an easy way to download.

The various licenses are disclosed as required in Section “Open Source Licenses”.

Linux

The Linux operating system (Version 4.19.94) is compiled and linked independently of the ODV2D application and tailored for embedded devices and shipped with the BeagleBoard-x15 and BeagleBone. Information about Linux can be found at <https://git.ti.com/cgit/ti-linux-kernel/ti-linux-kernel/>.

Changes have been made to Linux modules and thus based on the [GPL 2.0 License](#) (Section “GPL 2.0”) these changes must be made available to the public.

Linux Boot Loader

The **Linux Boot Loader (U-Boot)** (Version 2019.0) is compiled and linked as a separate program within the ODV2D system and not directly linked to the application. Its purpose is to load and start the Linux operating system and setting any necessary environment variables. Information about U-Boot can be found at <https://git.ti.com/cgit/processor-sdk/processor-sdk-u-boot>.

Changes have been made to U-Boot and thus based on the [GPL 3.0 License](#) (Section “GPL 3.0”) these changes must be made available to the public.

Aptina Video Driver Module

The Aptina Video Driver Module (Version unknown) is used to capture images for the ODV2D system. The driver module is compiled separately and bundled with the Angstrom Linux operating system. It does not have any direct linkage with the proprietary ODV2D application. This module is described at https://github.com/Aptina/BeagleBoard-xM/blob/master/MT9V034/Angstrom/README_Beagleboard-xM_mt9v034.txt.

Changes have been made to this driver module and thus based on the [GPL 2.0 License](#) (Section "GPL 2.0") these changes must be made available to the public.

This can be downloaded at <https://github.com/Aptina/BeagleBoard-xM/tree/master/MT9P031/Angstrom>.

Busybox

BusyBox is a software suite that provides multiple Unix/Linux utilities in a single executable file. Many of the tools it provides are designed to work with interfaces provided by the Linux kernel. As the single executable, it replaces basic functions of more than 300 common commands. It is released as free software (<http://www.busybox.net/downloads>) under the terms of the [GNU General Public License, version 2](#)

GNU C Libraries

The GNU C Libraries (Version 2.25) are a standard for Unix and Linux operating systems. Applications written in C need these libraries and thus they must be included with the Angstrom Linux package.

The GNU C Libraries are under [LGPL 3.0 License](#) (Section "LGPL 3.0") and compiled separately and dynamically linked with the Linux operating system. The GNU C Libraries have not been modified and they do not have any direct linkage with the proprietary ODV2D application. Since no changes have been made, there is nothing that must be made available to the public.

The GNU C Libraries can be downloaded at Included in Linux root file system <http://www.angstrom-distribution.org/builder/>.

OpenCV3

From <http://opencv.org/about.html>: OpenCV (Open Source Computer Vision Library) is an open source computer vision and machine learning software library. OpenCV was built to provide a common infrastructure for computer vision applications and to accelerate the use of machine perception in the commercial products. Being a BSD-licensed product, the OpenCV Library is under the [BSD License](#) and compiled and dynamically linked with the ODV2D application.

The OpenCV Library (Version 3.4.9) can be downloaded at Included in Linux root file system <https://docs.opencv.org/3.4.9/> . The license information in the source code is available [here](#).

ZXing Barcode Reader

From <https://code.google.com/p/zxing/>: ZXing (pronounced "zebra crossing") is an open-source, multi-format 1D/2D barcode image processing library implemented in Java, with ports to other languages. Our focus is on using the built-in camera on mobile phones to scan and decode barcodes on the device, without communicating with a server. However, the project can be used to encode and decode barcodes on desktops and servers as well.

The ZXing Barcode Reader (Version 3.3) is under the [Apache 2.0 License](#) (Section "Apache 2.0") is compiled and statically linked with the ODV2D application. Changes have been made but are not required for disclosure.

The ZXing Barcode Reader can be downloaded at <http://zxing.googlecode.com/files/ZXing-2.0.zip>. The licensor is Sean Owen and headers in the source code contain the following information:

Copyright (C) 2016 Journey Mobile, Inc
Copyright (C) 2008-2014 ZXing authors

Licensed under the Apache License, Version 2.0 (the "License"); you may not use this file except in compliance with the License. You may obtain a copy of the License at <http://www.apache.org/licenses/LICENSE-2.0>

Unless required by applicable law or agreed to in writing, software distributed under the License is distributed on an "AS IS" BASIS, WITHOUT WARRANTIES OR CONDITIONS OF ANY KIND, either express or implied. See the License for the specific language governing permissions and limitations under the License.

Mongoose Web Server

From <http://code.google.com/p/mongoose>: Project mission is to provide simple, functional, embeddable web server to make it easy for application and device developers to implement web interface for their application and devices, and to offer a simple development environment.

The Mongoose Embedded Web Server (Version 3.1) is under the [MIT License](#) is compiled and statically linked with the ODV2D application. It is used for diagnostics. Changes have been made but are not required for disclosure.

The Mongoose Web Server can be downloaded at <http://code.google.com/p/mongoose/downloads/list>. The licensor is Sergey Lyubka. Below is the information in the source code header.

```
// Copyright (c) 2004-2013 Sergey Lyubka
//
// Permission is hereby granted, free of charge, to any person obtaining a copy
// of this software and associated documentation files (the "Software"), to deal
// in the Software without restriction, including without limitation the rights
// to use, copy, modify, merge, publish, distribute, sublicense, and/or sell
// copies of the Software, and to permit persons to whom the Software is
// furnished to do so, subject to the following conditions:
//
// The above copyright notice and this permission notice shall be included in
// all copies or substantial portions of the Software.
//
// THE SOFTWARE IS PROVIDED "AS IS", WITHOUT WARRANTY OF ANY KIND, EXPRESS OR
// IMPLIED, INCLUDING BUT NOT LIMITED TO THE WARRANTIES OF MERCHANTABILITY,
// FITNESS FOR A PARTICULAR PURPOSE AND NONINFRINGEMENT. IN NO EVENT SHALL THE
// AUTHORS OR COPYRIGHT HOLDERS BE LIABLE FOR ANY CLAIM, DAMAGES OR OTHER
// LIABILITY, WHETHER IN AN ACTION OF CONTRACT, TORT OR OTHERWISE, ARISING FROM,
// OUT OF OR IN CONNECTION WITH THE SOFTWARE OR THE USE OR OTHER DEALINGS IN
// THE SOFTWARE.
```

Additional Open Source Components

| Package | Version | Description | License |
|-----------------------|------------|--|---|
| argp-standalone | 1.3 | Standalone version of argp - part of glibc library | LGPL-2.0+ |
| busybox | 1.31.1 | Library of common UNIX utilities | GPL-2.0 |
| dropbear | 2019.78 | Provides a Secure Shell-compatible server and client | MIT, BSD-2-Clause, BSD-3-Clause |
| e2fsprogs | 1.45.5 | Utilities for Linux ext2 file system | GPL-2.0, MIT-like with advertising clause (libss and libet) |
| gdb | 8.2.1 | GNU Project debugger | GPL-2.0+, LGPL-2.0+, GPL-3.0+, LGPL-3.0+ |
| gptfdisk | 1.0.4 | Disk partitioning tool | GPL-2.0+ |
| htop | 2.2.0 | Interactive process viewer | GPL-2.0 |
| ifplugd | 0.28 | Daemon to configure ethernet device | GPL-2.0+ |
| jitterentropy-library | 2.2.0 | Random number generator | GPL-2.0 or BSD-3-Clause |
| jpeg-turbo | 2.0.4 | JPEG image codec that uses SIMD instructions | IJG (libjpeg), BSD-3-Clause (TurboJPEG), Zlib (SIMD) |
| libconfig | 1.7.2 | Library for processing structured config files | LGPL-2.1+ |
| libcvblobs | V8.3-1.01C | Open CV Blob detection | unknown |
| libdaemon | 0.14 | C library for writing UNIX daemons | LGPL-2.1+ |
| libgpiod | 1.4.1 | C library for use with the Linux GPIO char device | LGPL-2.1+ |
| libopenssl | 1.1.1f | Library for SSL and TSL protocols | OpenSSL or SSLeay |
| libpng | 1.6.37 | Library for Portable Network Graphics (PNG image format) | Libpng-2.0 |
| libsysfs | 2.1.0 | Interface for querying system device information | GPL-2.0 (utilities), LGPL-2.1+ (library) |
| libubootenv | | Access to U-Boot environment. | LGPL-2.1 |
| libzlib | 1.2.11 | Data-compression library | Zlib |
| mmc-utils | | Tool for configuring eMMC storage devices | GPL-2.0 |
| ncurses | 6.1 | Tool to update displays | MIT with advertising clause |
| popt | 1.16 | Libraries to parse command-line options | MIT |
| rng-tools | 6.9 | Random number generator tools | GPL-2.0 |

| | | | |
|-------------|------------|---|---|
| swupdate | 2019.11 | Update embedded system software | GPL-2.0+ with OpenSSL exception, LGPL-2.1+, MIT |
| ti-cmem | 4.16.00.00 | Interface to the contiguous memory allocator | GPL-2.0 |
| ti-omapconf | 1.74 | TI OMAP Processors Diagnostic Tool | GPL-2.0, BSD |
| ti-vpdma-fw | Mar-12 | TI Video Input Port and Video Processing Engine | TI-TSPA |
| unzip | 60 | Zipfile-extraction program | Info-ZIP |
| zip | 3 | Compression and file packaging/archive utility | Info-ZIP |

Open Source Licenses

This section provides (as required) the licenses displayed for all open source components. They are references as needed for Section "Open Source Acknowledgements". The BSD license and MIT license do not require explanation but do require the author's disclaimers are included which is done in the earlier referenced section.

GPL 2.0

GNU GENERAL PUBLIC LICENSE

Version 2, June 1991

Copyright (C) 1989, 1991 Free Software Foundation, Inc.
51 Franklin Street, Fifth Floor, Boston, MA 02110-1301, USA

Everyone is permitted to copy and distribute verbatim copies of this license document, but changing it is not allowed.

Preamble

The licenses for most software are designed to take away your freedom to share and change it. By contrast, the GNU General Public License is intended to guarantee your freedom to share and change free software--to make sure the software is free for all its users. This General Public License applies to most of the Free Software Foundation's software and to any other program whose authors commit to using it. (Some other Free Software Foundation software is covered by the GNU Lesser General Public License instead.) You can apply it to your programs, too.

When we speak of free software, we are referring to freedom, not price. Our General Public Licenses are designed to make sure that you have the freedom to distribute copies of free software (and charge for this service if you wish), that you receive source code or can get it if you want it, that you can change the software or use pieces of it in new free programs; and that you know you can do these things.

To protect your rights, we need to make restrictions that forbid anyone to deny you these rights or to ask you to surrender the rights. These restrictions translate to certain responsibilities for you if you distribute copies of the software, or if you modify it.

For example, if you distribute copies of such a program, whether gratis or for a fee, you must give the recipients all the rights that you have. You must make sure that they, too, receive or can get the source code. And you must show them these terms so they know their rights.

We protect your rights with two steps: (1) copyright the software, and (2) offer you this license which gives you legal permission to copy, distribute and/or modify the software.

Also, for each author's protection and ours, we want to make certain that everyone understands that there is no warranty for this free software. If the software is modified by someone else and passed on, we want its recipients to know

that what they have is not the original, so that any problems introduced by others will not reflect on the original authors' reputations.

Finally, any free program is threatened constantly by software patents. We wish to avoid the danger that redistributors of a free program will individually obtain patent licenses, in effect making the program proprietary. To prevent this, we have made it clear that any patent must be licensed for everyone's free use or not licensed at all.

The precise terms and conditions for copying, distribution and modification follow.

TERMS AND CONDITIONS FOR COPYING, DISTRIBUTION AND MODIFICATION

0. This License applies to any program or other work which contains a notice placed by the copyright holder saying it may be distributed under the terms of this General Public License. The "Program", below, refers to any such program or work, and a "work based on the Program" means either the Program or any derivative work under copyright law: that is to say, a work containing the Program or a portion of it, either verbatim or with modifications and/or translated into another language. (Hereinafter, translation is included without limitation in the term "modification".) Each licensee is addressed as "you".

Activities other than copying, distribution and modification are not covered by this License; they are outside its scope. The act of running the Program is not restricted, and the output from the Program is covered only if its contents constitute a work based on the Program (independent of having been made by running the Program). Whether that is true depends on what the Program does.

1. You may copy and distribute verbatim copies of the Program's source code as you receive it, in any medium, provided that you conspicuously and appropriately publish on each copy an appropriate copyright notice and disclaimer of warranty; keep intact all the notices that refer to this License and to the absence of any warranty; and give any other recipients of the Program a copy of this License along with the Program.

You may charge a fee for the physical act of transferring a copy, and you may at your option offer warranty protection in exchange for a fee.

2. You may modify your copy or copies of the Program or any portion of it, thus forming a work based on the Program, and copy and distribute such modifications or work under the terms of Section 1 above, provided that you also meet all of these conditions:

- a)** You must cause the modified files to carry prominent notices stating that you changed the files and the date of any change.
- b)** You must cause any work that you distribute or publish, that in whole or in part contains or is derived from the Program or any part thereof, to be licensed as a whole at no charge to all third parties under the terms of this License.
- c)** If the modified program normally reads commands interactively when run, you must cause it, when started running for such interactive use in the most ordinary way, to print or display an announcement including an appropriate copyright notice and a notice that there is no warranty (or else, saying that you provide a warranty) and that users may redistribute the program under these conditions, and telling the user how to view a copy of this License. (Exception: if the Program itself is interactive but does not normally print such an announcement, your work based on the Program is not required to print an announcement.)

These requirements apply to the modified work as a whole. If identifiable sections of that work are not derived from the Program, and can be reasonably considered independent and separate works in themselves, then this License, and its terms, do not apply to those sections when you distribute them as separate works. But when you distribute the same sections as part of a whole which is a work based on the Program, the distribution of the whole must be on the terms of this License, whose permissions for other licensees extend to the entire whole, and thus to each and every part regardless of who wrote it.

Thus, it is not the intent of this section to claim rights or contest your rights to work written entirely by you; rather, the intent is to exercise the right to control the distribution of derivative or collective works based on the Program.

In addition, mere aggregation of another work not based on the Program with the Program (or with a work based on the Program) on a volume of a storage or distribution medium does not bring the other work under the scope of this License.

3. You may copy and distribute the Program (or a work based on it, under Section 2) in object code or executable form under the terms of Sections 1 and 2 above provided that you also do one of the following:

- a)** Accompany it with the complete corresponding machine-readable source code, which must be distributed under the terms of Sections 1 and 2 above on a medium customarily used for software interchange; or,
- b)** Accompany it with a written offer, valid for at least three years, to give any third party, for a charge no more than your cost of physically performing source distribution, a complete machine-readable copy of the corresponding source code, to be distributed under the terms of Sections 1 and 2 above on a medium customarily used for software interchange; or,
- c)** Accompany it with the information you received as to the offer to distribute corresponding source code. (This alternative is allowed only for noncommercial distribution and only if you received the program in object code or executable form with such an offer, in accord with Subsection b above.)

The source code for a work means the preferred form of the work for making modifications to it. For an executable work, complete source code means all the source code for all modules it contains, plus any associated interface definition files, plus the scripts used to control compilation and installation of the executable. However, as a special exception, the source code distributed need not include anything that is normally distributed (in either source or binary form) with the major components (compiler, kernel, and so on) of the operating system on which the executable runs, unless that component itself accompanies the executable.

If distribution of executable or object code is made by offering access to copy from a designated place, then offering equivalent access to copy the source code from the same place counts as distribution of the source code, even though third parties are not compelled to copy the source along with the object code.

4. You may not copy, modify, sublicense, or distribute the Program except as expressly provided under this License. Any attempt otherwise to copy, modify, sublicense or distribute the Program is void, and will automatically terminate your rights under this License. However, parties who have received copies, or rights, from you under this License will not have their licenses terminated so long as such parties remain in full compliance.

5. You are not required to accept this License, since you have not signed it. However, nothing else grants you permission to modify or distribute the Program or its derivative works. These actions are prohibited by law if you do not accept this License. Therefore, by modifying or distributing the Program (or any work based on the Program), you indicate your acceptance of this License to do so, and all its terms and conditions for copying, distributing or modifying the Program or works based on it.

6. Each time you redistribute the Program (or any work based on the Program), the recipient automatically receives a license from the original licensor to copy, distribute or modify the Program subject to these terms and conditions. You may not impose any further restrictions on the recipients' exercise of the rights granted herein. You are not responsible for enforcing compliance by third parties to this License.

7. If, as a consequence of a court judgment or allegation of patent infringement or for any other reason (not limited to patent issues), conditions are imposed on you (whether by court order, agreement or otherwise) that contradict the conditions of this License, they do not excuse you from the conditions of this License. If you cannot distribute so as to satisfy simultaneously your obligations under this License and any other pertinent obligations, then as a consequence you may not distribute the Program at all. For example, if a patent license would not permit royalty-free redistribution of the Program by all those who receive copies directly or indirectly through you, then the only way you could satisfy both it and this License would be to refrain entirely from distribution of the Program.

If any portion of this section is held invalid or unenforceable under any particular circumstance, the balance of the section is intended to apply and the section as a whole is intended to apply in other circumstances.

It is not the purpose of this section to induce you to infringe any patents or other property right claims or to contest validity of any such claims; this section has the sole purpose of protecting the integrity of the free software distribution system, which is implemented by public license practices. Many people have made generous contributions to the wide range of software distributed through that system in reliance on consistent application of that system; it is up to the author/donor to decide if he or she is willing to distribute software through any other system and a licensee cannot impose that choice.

This section is intended to make thoroughly clear what is believed to be a consequence of the rest of this License.

8. If the distribution and/or use of the Program is restricted in certain countries either by patents or by copyrighted interfaces, the original copyright holder who places the Program under this License may add an explicit geographical distribution limitation excluding those countries, so that distribution is permitted only in or among countries not thus excluded. In such case, this License incorporates the limitation as if written in the body of this License.

9. The Free Software Foundation may publish revised and/or new versions of the General Public License from time to time. Such new versions will be similar in spirit to the present version, but may differ in detail to address new problems or concerns.

Each version is given a distinguishing version number. If the Program specifies a version number of this License which applies to it and "any later version", you have the option of following the terms and conditions either of that version or of any later version published by the Free Software Foundation. If the Program does not specify a version number of this License, you may choose any version ever published by the Free Software Foundation.

10. If you wish to incorporate parts of the Program into other free programs whose distribution conditions are different, write to the author to ask for permission. For software which is copyrighted by the Free Software Foundation, write to the Free Software Foundation; we sometimes make exceptions for this. Our decision will be guided by the two goals of preserving the free status of all derivatives of our free software and of promoting the sharing and reuse of software generally.

NO WARRANTY

11. BECAUSE THE PROGRAM IS LICENSED FREE OF CHARGE, THERE IS NO WARRANTY FOR THE PROGRAM, TO THE EXTENT PERMITTED BY APPLICABLE LAW. EXCEPT WHEN OTHERWISE STATED IN WRITING THE COPYRIGHT HOLDERS AND/OR OTHER PARTIES PROVIDE THE PROGRAM "AS IS" WITHOUT WARRANTY OF ANY KIND, EITHER EXPRESSED OR IMPLIED, INCLUDING, BUT NOT LIMITED TO, THE IMPLIED WARRANTIES OF MERCHANTABILITY AND FITNESS FOR A PARTICULAR PURPOSE. THE ENTIRE RISK AS TO THE QUALITY AND PERFORMANCE OF THE PROGRAM IS WITH YOU. SHOULD THE PROGRAM PROVE DEFECTIVE, YOU ASSUME THE COST OF ALL NECESSARY SERVICING, REPAIR OR CORRECTION.

12. IN NO EVENT UNLESS REQUIRED BY APPLICABLE LAW OR AGREED TO IN WRITING WILL ANY COPYRIGHT HOLDER, OR ANY OTHER PARTY WHO MAY MODIFY AND/OR REDISTRIBUTE THE PROGRAM AS PERMITTED ABOVE, BE LIABLE TO YOU FOR DAMAGES, INCLUDING ANY GENERAL, SPECIAL, INCIDENTAL OR CONSEQUENTIAL DAMAGES ARISING OUT OF THE USE OR INABILITY TO USE THE PROGRAM (INCLUDING BUT NOT LIMITED TO LOSS OF DATA OR DATA BEING RENDERED INACCURATE OR LOSSES SUSTAINED BY YOU OR THIRD PARTIES OR A FAILURE OF THE PROGRAM TO OPERATE WITH ANY OTHER PROGRAMS), EVEN IF SUCH HOLDER OR OTHER PARTY HAS BEEN ADVISED OF THE POSSIBILITY OF SUCH DAMAGES.

END OF TERMS AND CONDITIONS

GPL 3.0

GNU GENERAL PUBLIC LICENSE

Version 3, 29 June 2007

Copyright © 2007 Free Software Foundation, Inc. <<http://fsf.org/>>

Everyone is permitted to copy and distribute verbatim copies of this license document, but changing it is not allowed.

Preamble

The GNU General Public License is a free, copyleft license for software and other kinds of works.

The licenses for most software and other practical works are designed to take away your freedom to share and change the works. By contrast, the GNU General Public License is intended to guarantee your freedom to share and change all versions of a program--to make sure it remains free software for all its users. We, the Free Software Foundation, use the GNU General Public License for most of our software; it applies also to any other work released this way by its authors. You can apply it to your programs, too.

When we speak of free software, we are referring to freedom, not price. Our General Public Licenses are designed to make sure that you have the freedom to distribute copies of free software (and charge for them if you wish), that you

receive source code or can get it if you want it, that you can change the software or use pieces of it in new free programs, and that you know you can do these things.

To protect your rights, we need to prevent others from denying you these rights or asking you to surrender the rights. Therefore, you have certain responsibilities if you distribute copies of the software, or if you modify it: responsibilities to respect the freedom of others.

For example, if you distribute copies of such a program, whether gratis or for a fee, you must pass on to the recipients the same freedoms that you received. You must make sure that they, too, receive or can get the source code. And you must show them these terms so they know their rights.

Developers that use the GNU GPL protect your rights with two steps: (1) assert copyright on the software, and (2) offer you this License giving you legal permission to copy, distribute and/or modify it.

For the developers' and authors' protection, the GPL clearly explains that there is no warranty for this free software. For both users' and authors' sake, the GPL requires that modified versions be marked as changed, so that their problems will not be attributed erroneously to authors of previous versions.

Some devices are designed to deny users access to install or run modified versions of the software inside them, although the manufacturer can do so. This is fundamentally incompatible with the aim of protecting users' freedom to change the software. The systematic pattern of such abuse occurs in the area of products for individuals to use, which is precisely where it is most unacceptable. Therefore, we have designed this version of the GPL to prohibit the practice for those products. If such problems arise substantially in other domains, we stand ready to extend this provision to those domains in future versions of the GPL, as needed to protect the freedom of users.

Finally, every program is threatened constantly by software patents. States should not allow patents to restrict development and use of software on general-purpose computers, but in those that do, we wish to avoid the special danger that patents applied to a free program could make it effectively proprietary. To prevent this, the GPL assures that patents cannot be used to render the program non-free.

The precise terms and conditions for copying, distribution and modification follow.

TERMS AND CONDITIONS

0. Definitions.

“This License” refers to version 3 of the GNU General Public License.

“Copyright” also means copyright-like laws that apply to other kinds of works, such as semiconductor masks.

“The Program” refers to any copyrightable work licensed under this License. Each licensee is addressed as “you”.

“Licensees” and “recipients” may be individuals or organizations.

To “modify” a work means to copy from or adapt all or part of the work in a fashion requiring copyright permission, other than the making of an exact copy. The resulting work is called a “modified version” of the earlier work or a work “based on” the earlier work.

A “covered work” means either the unmodified Program or a work based on the Program.

To “propagate” a work means to do anything with it that, without permission, would make you directly or secondarily liable for infringement under applicable copyright law, except executing it on a computer or modifying a private copy. Propagation includes copying, distribution (with or without modification), making available to the public, and in some countries other activities as well.

To “convey” a work means any kind of propagation that enables other parties to make or receive copies. Mere interaction with a user through a computer network, with no transfer of a copy, is not conveying.

An interactive user interface displays “Appropriate Legal Notices” to the extent that it includes a convenient and prominently visible feature that (1) displays an appropriate copyright notice, and (2) tells the user that there is no warranty for the work (except to the extent that warranties are provided), that licensees may convey the work under this License, and how to view a copy of this License. If the interface presents a list of user commands or options, such as a menu, a prominent item in the list meets this criterion.

1. Source Code.

The “source code” for a work means the preferred form of the work for making modifications to it. “Object code” means any non-source form of a work.

A “Standard Interface” means an interface that either is an official standard defined by a recognized standards body, or, in the case of interfaces specified for a particular programming language, one that is widely used among developers working in that language.

The “System Libraries” of an executable work include anything, other than the work as a whole, that (a) is included in the normal form of packaging a Major Component, but which is not part of that Major Component, and (b) serves only to enable use of the work with that Major Component, or to implement a Standard Interface for which an implementation is available to the public in source code form. A “Major Component”, in this context, means a major essential component (kernel, window system, and so on) of the specific operating system (if any) on which the executable work runs, or a compiler used to produce the work, or an object code interpreter used to run it.

The “Corresponding Source” for a work in object code form means all the source code needed to generate, install, and (for an executable work) run the object code and to modify the work, including scripts to control those activities. However, it does not include the work's System Libraries, or general-purpose tools or generally available free programs which are used unmodified in performing those activities, but which are not part of the work. For example, Corresponding Source includes interface definition files associated with source files for the work, and the source code for shared libraries and dynamically linked subprograms that the work is specifically designed to require, such as by intimate data communication or control flow between those subprograms and other parts of the work.

The Corresponding Source need not include anything that users can regenerate automatically from other parts of the Corresponding Source.

The Corresponding Source for a work in source code form is that same work.

2. Basic Permissions.

All rights granted under this License are granted for the term of copyright on the Program and are irrevocable provided the stated conditions are met. This License explicitly affirms your unlimited permission to run the unmodified Program. The output from running a covered work is covered by this License only if the output, given its content, constitutes a covered work. This License acknowledges your rights of fair use or other equivalent, as provided by copyright law.

You may make, run and propagate covered works that you do not convey, without conditions so long as your license otherwise remains in force. You may convey covered works to others for the sole purpose of having them make modifications exclusively for you, or provide you with facilities for running those works, provided that you comply with the terms of this License in conveying all material for which you do not control copyright. Those thus making or running the covered works for you must do so exclusively on your behalf, under your direction and control, on terms that prohibit them from making any copies of your copyrighted material outside their relationship with you.

Conveying under any other circumstances is permitted solely under the conditions stated below. Sublicensing is not allowed; section 10 makes it unnecessary.

3. Protecting Users' Legal Rights from Anti-Circumvention Law.

No covered work shall be deemed part of an effective technological measure under any applicable law fulfilling obligations under article 11 of the WIPO copyright treaty adopted on 20 December 1996, or similar laws prohibiting or restricting circumvention of such measures.

When you convey a covered work, you waive any legal power to forbid circumvention of technological measures to the extent such circumvention is effected by exercising rights under this License with respect to the covered work, and you disclaim any intention to limit operation or modification of the work as a means of enforcing, against the work's users, your or third parties' legal rights to forbid circumvention of technological measures.

4. Conveying Verbatim Copies.

You may convey verbatim copies of the Program's source code as you receive it, in any medium, provided that you conspicuously and appropriately publish on each copy an appropriate copyright notice; keep intact all notices stating that this License and any non-permissive terms added in accord with section 7 apply to the code; keep intact all notices of the absence of any warranty; and give all recipients a copy of this License along with the Program.

You may charge any price or no price for each copy that you convey, and you may offer support or warranty protection for a fee.

5. Conveying Modified Source Versions.

You may convey a work based on the Program, or the modifications to produce it from the Program, in the form of source code under the terms of section 4, provided that you also meet all of these conditions:

- a) The work must carry prominent notices stating that you modified it, and giving a relevant date.
- b) The work must carry prominent notices stating that it is released under this License and any conditions added under section 7. This requirement modifies the requirement in section 4 to “keep intact all notices”.
- c) You must license the entire work, as a whole, under this License to anyone who comes into possession of a copy. This License will therefore apply, along with any applicable section 7 additional terms, to the whole of the work, and all its parts, regardless of how they are packaged. This License gives no permission to license the work in any other way, but it does not invalidate such permission if you have separately received it.
- d) If the work has interactive user interfaces, each must display Appropriate Legal Notices; however, if the Program has interactive interfaces that do not display Appropriate Legal Notices, your work need not make them do so.

A compilation of a covered work with other separate and independent works, which are not by their nature extensions of the covered work, and which are not combined with it such as to form a larger program, in or on a volume of a storage or distribution medium, is called an “aggregate” if the compilation and its resulting copyright are not used to limit the access or legal rights of the compilation’s users beyond what the individual works permit. Inclusion of a covered work in an aggregate does not cause this License to apply to the other parts of the aggregate.

6. Conveying Non-Source Forms.

You may convey a covered work in object code form under the terms of sections 4 and 5, provided that you also convey the machine-readable Corresponding Source under the terms of this License, in one of these ways:

- a) Convey the object code in, or embodied in, a physical product (including a physical distribution medium), accompanied by the Corresponding Source fixed on a durable physical medium customarily used for software interchange.
- b) Convey the object code in, or embodied in, a physical product (including a physical distribution medium), accompanied by a written offer, valid for at least three years and valid for as long as you offer spare parts or customer support for that product model, to give anyone who possesses the object code either (1) a copy of the Corresponding Source for all the software in the product that is covered by this License, on a durable physical medium customarily used for software interchange, for a price no more than your reasonable cost of physically performing this conveying of source, or (2) access to copy the Corresponding Source from a network server at no charge.
- c) Convey individual copies of the object code with a copy of the written offer to provide the Corresponding Source. This alternative is allowed only occasionally and noncommercially, and only if you received the object code with such an offer, in accord with subsection 6b.
- d) Convey the object code by offering access from a designated place (gratis or for a charge), and offer equivalent access to the Corresponding Source in the same way through the same place at no further charge. You need not require recipients to copy the Corresponding Source along with the object code. If the place to copy the object code is a network server, the Corresponding Source may be on a different server (operated by you or a third party) that supports equivalent copying facilities, provided you maintain clear directions next to the object code saying where to find the Corresponding Source. Regardless of what server hosts the Corresponding Source, you remain obligated to ensure that it is available for as long as needed to satisfy these requirements.
- e) Convey the object code using peer-to-peer transmission, provided you inform other peers where the object code and Corresponding Source of the work are being offered to the general public at no charge under subsection 6d.

A separable portion of the object code, whose source code is excluded from the Corresponding Source as a System Library, need not be included in conveying the object code work.

A “User Product” is either (1) a “consumer product”, which means any tangible personal property which is normally used for personal, family, or household purposes, or (2) anything designed or sold for incorporation into a dwelling. In determining whether a product is a consumer product, doubtful cases shall be resolved in favor of coverage. For a particular product received by a particular user, “normally used” refers to a typical or common use of that class of product, regardless of the status of the particular user or of the way in which the particular user actually uses, or expects or is expected to use, the product. A product is a consumer product regardless of whether the product has substantial commercial, industrial or non-consumer uses, unless such uses represent the only significant mode of use of the product.

“Installation Information” for a User Product means any methods, procedures, authorization keys, or other information required to install and execute modified versions of a covered work in that User Product from a modified version of its Corresponding Source. The information must suffice to ensure that the continued functioning of the modified object code is in no case prevented or interfered with solely because modification has been made.

If you convey an object code work under this section in, or with, or specifically for use in, a User Product, and the conveying occurs as part of a transaction in which the right of possession and use of the User Product is transferred to the recipient in perpetuity or for a fixed term (regardless of how the transaction is characterized), the Corresponding Source conveyed under this section must be accompanied by the Installation Information. But this requirement does not apply if neither you nor any third party retains the ability to install modified object code on the User Product (for example, the work has been installed in ROM).

The requirement to provide Installation Information does not include a requirement to continue to provide support service, warranty, or updates for a work that has been modified or installed by the recipient, or for the User Product in which it has been modified or installed. Access to a network may be denied when the modification itself materially and adversely affects the operation of the network or violates the rules and protocols for communication across the network.

Corresponding Source conveyed, and Installation Information provided, in accord with this section must be in a format that is publicly documented (and with an implementation available to the public in source code form), and must require no special password or key for unpacking, reading or copying.

7. Additional Terms.

“Additional permissions” are terms that supplement the terms of this License by making exceptions from one or more of its conditions. Additional permissions that are applicable to the entire Program shall be treated as though they were included in this License, to the extent that they are valid under applicable law. If additional permissions apply only to part of the Program, that part may be used separately under those permissions, but the entire Program remains governed by this License without regard to the additional permissions.

When you convey a copy of a covered work, you may at your option remove any additional permissions from that copy, or from any part of it. (Additional permissions may be written to require their own removal in certain cases when you modify the work.) You may place additional permissions on material, added by you to a covered work, for which you have or can give appropriate copyright permission.

Notwithstanding any other provision of this License, for material you add to a covered work, you may (if authorized by the copyright holders of that material) supplement the terms of this License with terms:

- a) Disclaiming warranty or limiting liability differently from the terms of sections 15 and 16 of this License; or
- b) Requiring preservation of specified reasonable legal notices or author attributions in that material or in the Appropriate Legal Notices displayed by works containing it; or
- c) Prohibiting misrepresentation of the origin of that material, or requiring that modified versions of such material be marked in reasonable ways as different from the original version; or
- d) Limiting the use for publicity purposes of names of licensors or authors of the material; or
- e) Declining to grant rights under trademark law for use of some trade names, trademarks, or service marks; or

f) Requiring indemnification of licensors and authors of that material by anyone who conveys the material (or modified versions of it) with contractual assumptions of liability to the recipient, for any liability that these contractual assumptions directly impose on those licensors and authors.

All other non-permissive additional terms are considered “further restrictions” within the meaning of section 10. If the Program as you received it, or any part of it, contains a notice stating that it is governed by this License along with a term that is a further restriction, you may remove that term. If a license document contains a further restriction but permits relicensing or conveying under this License, you may add to a covered work material governed by the terms of that license document, provided that the further restriction does not survive such relicensing or conveying.

If you add terms to a covered work in accord with this section, you must place, in the relevant source files, a statement of the additional terms that apply to those files, or a notice indicating where to find the applicable terms.

Additional terms, permissive or non-permissive, may be stated in the form of a separately written license, or stated as exceptions; the above requirements apply either way.

8. Termination.

You may not propagate or modify a covered work except as expressly provided under this License. Any attempt otherwise to propagate or modify it is void, and will automatically terminate your rights under this License (including any patent licenses granted under the third paragraph of section 11).

However, if you cease all violation of this License, then your license from a particular copyright holder is reinstated (a) provisionally, unless and until the copyright holder explicitly and finally terminates your license, and (b) permanently, if the copyright holder fails to notify you of the violation by some reasonable means prior to 60 days after the cessation.

Moreover, your license from a particular copyright holder is reinstated permanently if the copyright holder notifies you of the violation by some reasonable means, this is the first time you have received notice of violation of this License (for any work) from that copyright holder, and you cure the violation prior to 30 days after your receipt of the notice.

Termination of your rights under this section does not terminate the licenses of parties who have received copies or rights from you under this License. If your rights have been terminated and not permanently reinstated, you do not qualify to receive new licenses for the same material under section 10.

9. Acceptance Not Required for Having Copies.

You are not required to accept this License in order to receive or run a copy of the Program. Ancillary propagation of a covered work occurring solely as a consequence of using peer-to-peer transmission to receive a copy likewise does not require acceptance. However, nothing other than this License grants you permission to propagate or modify any covered work. These actions infringe copyright if you do not accept this License. Therefore, by modifying or propagating a covered work, you indicate your acceptance of this License to do so.

10. Automatic Licensing of Downstream Recipients.

Each time you convey a covered work, the recipient automatically receives a license from the original licensors, to run, modify and propagate that work, subject to this License. You are not responsible for enforcing compliance by third parties with this License.

An “entity transaction” is a transaction transferring control of an organization, or substantially all assets of one, or subdividing an organization, or merging organizations. If propagation of a covered work results from an entity transaction, each party to that transaction who receives a copy of the work also receives whatever licenses to the work the party's predecessor in interest had or could give under the previous paragraph, plus a right to possession of the Corresponding Source of the work from the predecessor in interest, if the predecessor has it or can get it with reasonable efforts.

You may not impose any further restrictions on the exercise of the rights granted or affirmed under this License. For example, you may not impose a license fee, royalty, or other charge for exercise of rights granted under this License, and you may not initiate litigation (including a cross-claim or counterclaim in a lawsuit) alleging that any patent claim is infringed by making, using, selling, offering for sale, or importing the Program or any portion of it.

11. Patents.

A “contributor” is a copyright holder who authorizes use under this License of the Program or a work on which the Program is based. The work thus licensed is called the contributor’s “contributor version”.

A contributor’s “essential patent claims” are all patent claims owned or controlled by the contributor, whether already acquired or hereafter acquired, that would be infringed by some manner, permitted by this License, of making, using, or selling its contributor version, but do not include claims that would be infringed only as a consequence of further modification of the contributor version. For purposes of this definition, “control” includes the right to grant patent sublicenses in a manner consistent with the requirements of this License.

Each contributor grants you a non-exclusive, worldwide, royalty-free patent license under the contributor’s essential patent claims, to make, use, sell, offer for sale, import and otherwise run, modify and propagate the contents of its contributor version.

In the following three paragraphs, a “patent license” is any express agreement or commitment, however denominated, not to enforce a patent (such as an express permission to practice a patent or covenant not to sue for patent infringement). To “grant” such a patent license to a party means to make such an agreement or commitment not to enforce a patent against the party.

If you convey a covered work, knowingly relying on a patent license, and the Corresponding Source of the work is not available for anyone to copy, free of charge and under the terms of this License, through a publicly available network server or other readily accessible means, then you must either (1) cause the Corresponding Source to be so available, or (2) arrange to deprive yourself of the benefit of the patent license for this particular work, or (3) arrange, in a manner consistent with the requirements of this License, to extend the patent license to downstream recipients. “Knowingly relying” means you have actual knowledge that, but for the patent license, your conveying the covered work in a country, or your recipient’s use of the covered work in a country, would infringe one or more identifiable patents in that country that you have reason to believe are valid.

If, pursuant to or in connection with a single transaction or arrangement, you convey, or propagate by procuring conveyance of, a covered work, and grant a patent license to some of the parties receiving the covered work authorizing them to use, propagate, modify or convey a specific copy of the covered work, then the patent license you grant is automatically extended to all recipients of the covered work and works based on it.

A patent license is “discriminatory” if it does not include within the scope of its coverage, prohibits the exercise of, or is conditioned on the non-exercise of one or more of the rights that are specifically granted under this License. You may not convey a covered work if you are a party to an arrangement with a third party that is in the business of distributing software, under which you make payment to the third party based on the extent of your activity of conveying the work, and under which the third party grants, to any of the parties who would receive the covered work from you, a discriminatory patent license (a) in connection with copies of the covered work conveyed by you (or copies made from those copies), or (b) primarily for and in connection with specific products or compilations that contain the covered work, unless you entered into that arrangement, or that patent license was granted, prior to 28 March 2007.

Nothing in this License shall be construed as excluding or limiting any implied license or other defenses to infringement that may otherwise be available to you under applicable patent law.

12. No Surrender of Others' Freedom.

If conditions are imposed on you (whether by court order, agreement or otherwise) that contradict the conditions of this License, they do not excuse you from the conditions of this License. If you cannot convey a covered work so as to satisfy simultaneously your obligations under this License and any other pertinent obligations, then as a consequence you may not convey it at all. For example, if you agree to terms that obligate you to collect a royalty for further conveying from those to whom you convey the Program, the only way you could satisfy both those terms and this License would be to refrain entirely from conveying the Program.

13. Use with the GNU Affero General Public License.

Notwithstanding any other provision of this License, you have permission to link or combine any covered work with a work licensed under version 3 of the GNU Affero General Public License into a single combined work, and to convey the resulting work. The terms of this License will continue to apply to the part which is the covered work, but the special requirements of the GNU Affero General Public License, section 13, concerning interaction through a network will apply to the combination as such.

14. Revised Versions of this License.

The Free Software Foundation may publish revised and/or new versions of the GNU General Public License from time to time. Such new versions will be similar in spirit to the present version, but may differ in detail to address new problems or concerns.

Each version is given a distinguishing version number. If the Program specifies that a certain numbered version of the GNU General Public License “or any later version” applies to it, you have the option of following the terms and conditions either of that numbered version or of any later version published by the Free Software Foundation. If the Program does not specify a version number of the GNU General Public License, you may choose any version ever published by the Free Software Foundation.

If the Program specifies that a proxy can decide which future versions of the GNU General Public License can be used, that proxy’s public statement of acceptance of a version permanently authorizes you to choose that version for the Program.

Later license versions may give you additional or different permissions. However, no additional obligations are imposed on any author or copyright holder as a result of your choosing to follow a later version.

15. Disclaimer of Warranty.

THERE IS NO WARRANTY FOR THE PROGRAM, TO THE EXTENT PERMITTED BY APPLICABLE LAW. EXCEPT WHEN OTHERWISE STATED IN WRITING THE COPYRIGHT HOLDERS AND/OR OTHER PARTIES PROVIDE THE PROGRAM “AS IS” WITHOUT WARRANTY OF ANY KIND, EITHER EXPRESSED OR IMPLIED, INCLUDING, BUT NOT LIMITED TO, THE IMPLIED WARRANTIES OF MERCHANTABILITY AND FITNESS FOR A PARTICULAR PURPOSE. THE ENTIRE RISK AS TO THE QUALITY AND PERFORMANCE OF THE PROGRAM IS WITH YOU. SHOULD THE PROGRAM PROVE DEFECTIVE, YOU ASSUME THE COST OF ALL NECESSARY SERVICING, REPAIR OR CORRECTION.

16. Limitation of Liability.

IN NO EVENT UNLESS REQUIRED BY APPLICABLE LAW OR AGREED TO IN WRITING WILL ANY COPYRIGHT HOLDER, OR ANY OTHER PARTY WHO MODIFIES AND/OR CONVEYS THE PROGRAM AS PERMITTED ABOVE, BE LIABLE TO YOU FOR DAMAGES, INCLUDING ANY GENERAL, SPECIAL, INCIDENTAL OR CONSEQUENTIAL DAMAGES ARISING OUT OF THE USE OR INABILITY TO USE THE PROGRAM (INCLUDING BUT NOT LIMITED TO LOSS OF DATA OR DATA BEING RENDERED INACCURATE OR LOSSES SUSTAINED BY YOU OR THIRD PARTIES OR A FAILURE OF THE PROGRAM TO OPERATE WITH ANY OTHER PROGRAMS), EVEN IF SUCH HOLDER OR OTHER PARTY HAS BEEN ADVISED OF THE POSSIBILITY OF SUCH DAMAGES.

17. Interpretation of Sections 15 and 16.

If the disclaimer of warranty and limitation of liability provided above cannot be given local legal effect according to their terms, reviewing courts shall apply local law that most closely approximates an absolute waiver of all civil liability in connection with the Program, unless a warranty or assumption of liability accompanies a copy of the Program in return for a fee.

END OF TERMS AND CONDITIONS

LGPL 3.0

GNU LESSER GENERAL PUBLIC LICENSE

Version 3, 29 June 2007

Copyright © 2007 Free Software Foundation, Inc. <<http://fsf.org/>>

Everyone is permitted to copy and distribute verbatim copies of this license document, but changing it is not allowed.

This version of the GNU Lesser General Public License incorporates the terms and conditions of version 3 of the GNU General Public License, supplemented by the additional permissions listed below.

0. Additional Definitions.

As used herein, “this License” refers to version 3 of the GNU Lesser General Public License, and the “GNU GPL” refers to version 3 of the GNU General Public License.

“The Library” refers to a covered work governed by this License, other than an Application or a Combined Work as defined below.

An “Application” is any work that makes use of an interface provided by the Library, but which is not otherwise based on the Library. Defining a subclass of a class defined by the Library is deemed a mode of using an interface provided by the Library.

A “Combined Work” is a work produced by combining or linking an Application with the Library. The particular version of the Library with which the Combined Work was made is also called the “Linked Version”.

The “Minimal Corresponding Source” for a Combined Work means the Corresponding Source for the Combined Work, excluding any source code for portions of the Combined Work that, considered in isolation, are based on the Application, and not on the Linked Version.

The “Corresponding Application Code” for a Combined Work means the object code and/or source code for the Application, including any data and utility programs needed for reproducing the Combined Work from the Application, but excluding the System Libraries of the Combined Work.

1. Exception to Section 3 of the GNU GPL.

You may convey a covered work under sections 3 and 4 of this License without being bound by section 3 of the GNU GPL.

2. Conveying Modified Versions.

If you modify a copy of the Library, and, in your modifications, a facility refers to a function or data to be supplied by an Application that uses the facility (other than as an argument passed when the facility is invoked), then you may convey a copy of the modified version:

- a) under this License, provided that you make a good faith effort to ensure that, in the event an Application does not supply the function or data, the facility still operates, and performs whatever part of its purpose remains meaningful, or
- b) under the GNU GPL, with none of the additional permissions of this License applicable to that copy.

3. Object Code Incorporating Material from Library Header Files.

The object code form of an Application may incorporate material from a header file that is part of the Library. You may convey such object code under terms of your choice, provided that, if the incorporated material is not limited to numerical parameters, data structure layouts and accessors, or small macros, inline functions and templates (ten or fewer lines in length), you do both of the following:

- a) Give prominent notice with each copy of the object code that the Library is used in it and that the Library and its use are covered by this License.
- b) Accompany the object code with a copy of the GNU GPL and this license document.

4. Combined Works.

You may convey a Combined Work under terms of your choice that, taken together, effectively do not restrict modification of the portions of the Library contained in the Combined Work and reverse engineering for debugging such modifications, if you also do each of the following:

- a) Give prominent notice with each copy of the Combined Work that the Library is used in it and that the Library and its use are covered by this License.
- b) Accompany the Combined Work with a copy of the GNU GPL and this license document.
- c) For a Combined Work that displays copyright notices during execution, include the copyright notice for the Library among these notices, as well as a reference directing the user to the copies of the GNU GPL and this license document.
- d) Do one of the following:
 - 0) Convey the Minimal Corresponding Source under the terms of this License, and the Corresponding Application Code in a form suitable for, and under terms that permit, the user to recombine or relink the Application with a modified version of the Linked Version to produce a modified Combined Work, in the manner specified by section 6 of the GNU GPL for conveying

Corresponding Source.

1) Use a suitable shared library mechanism for linking with the Library. A suitable mechanism is one that (a) uses at run time a copy of the Library already present on the user's computer system, and (b) will operate properly with a modified version of the Library that is interface-compatible with the Linked Version.

e) Provide Installation Information, but only if you would otherwise be required to provide such information under section 6 of the GNU GPL, and only to the extent that such information is necessary to install and execute a modified version of the Combined Work produced by recombining or relinking the Application with a modified version of the Linked Version. (If you use option 4d0, the Installation Information must accompany the Minimal Corresponding Source and Corresponding Application Code. If you use option 4d1, you must provide the Installation Information in the manner specified by section 6 of the GNU GPL for conveying Corresponding Source.)

5. Combined Libraries.

You may place library facilities that are a work based on the Library side by side in a single library together with other library facilities that are not Applications and are not covered by this License, and convey such a combined library under terms of your choice, if you do both of the following:

- a) Accompany the combined library with a copy of the same work based on the Library, uncombined with any other library facilities, conveyed under the terms of this License.
- b) Give prominent notice with the combined library that part of it is a work based on the Library, and explaining where to find the accompanying uncombined form of the same work.

6. Revised Versions of the GNU Lesser General Public License.

The Free Software Foundation may publish revised and/or new versions of the GNU Lesser General Public License from time to time. Such new versions will be similar in spirit to the present version, but may differ in detail to address new problems or concerns.

Each version is given a distinguishing version number. If the Library as you received it specifies that a certain numbered version of the GNU Lesser General Public License "or any later version" applies to it, you have the option of following the terms and conditions either of that published version or of any later version published by the Free Software Foundation. If the Library as you received it does not specify a version number of the GNU Lesser General Public License, you may choose any version of the GNU Lesser General Public License ever published by the Free Software Foundation.

If the Library as you received it specifies that a proxy can decide whether future versions of the GNU Lesser General Public License shall apply, that proxy's public statement of acceptance of any version is permanent authorization for you to choose that version for the Library.

Apache 2.0

Apache License

Version 2.0, January 2004

<http://www.apache.org/licenses/>

TERMS AND CONDITIONS FOR USE, REPRODUCTION, AND DISTRIBUTION

1. Definitions.

"License" shall mean the terms and conditions for use, reproduction, and distribution as defined by Sections 1 through 9 of this document.

"Licensor" shall mean the copyright owner or entity authorized by the copyright owner that is granting the License.

"Legal Entity" shall mean the union of the acting entity and all other entities that control, are controlled by, or are under common control with that entity. For the purposes of this definition, "control" means (i) the power, direct or indirect, to cause the direction or management of such entity, whether by contract or otherwise, or (ii) ownership of fifty percent (50%) or more of the outstanding shares, or (iii) beneficial ownership of such entity.

"You" (or "Your") shall mean an individual or Legal Entity exercising permissions granted by this License.

"Source" form shall mean the preferred form for making modifications, including but not limited to software source code, documentation source, and configuration files.

"Object" form shall mean any form resulting from mechanical transformation or translation of a Source form, including but not limited to compiled object code, generated documentation, and conversions to other media types.

"Work" shall mean the work of authorship, whether in Source or Object form, made available under the License, as indicated by a copyright notice that is included in or attached to the work (an example is provided in the Appendix below).

"Derivative Works" shall mean any work, whether in Source or Object form, that is based on (or derived from) the Work and for which the editorial revisions, annotations, elaborations, or other modifications represent, as a whole, an original work of authorship. For the purposes of this License, Derivative Works shall not include works that remain separable from, or merely link (or bind by name) to the interfaces of, the Work and Derivative Works thereof.

"Contribution" shall mean any work of authorship, including the original version of the Work and any modifications or additions to that Work or Derivative Works thereof, that is intentionally submitted to Licensor for inclusion in the Work by the copyright owner or by an individual or Legal Entity authorized to submit on behalf of the copyright owner. For the purposes of this definition, "submitted" means any form of electronic, verbal, or written communication sent to the Licensor or its representatives, including but not limited to communication on electronic mailing lists, source code control systems, and issue tracking systems that are managed by, or on behalf of, the Licensor for the purpose of discussing and improving the Work, but excluding communication that is conspicuously marked or otherwise designated in writing by the copyright owner as "Not a Contribution."

"Contributor" shall mean Licensor and any individual or Legal Entity on behalf of whom a Contribution has been received by Licensor and subsequently incorporated within the Work.

2. Grant of Copyright License.

Subject to the terms and conditions of this License, each Contributor hereby grants to You a perpetual, worldwide, non-exclusive, no-charge, royalty-free, irrevocable copyright license to reproduce, prepare Derivative Works of, publicly display, publicly perform, sublicense, and distribute the Work and such Derivative Works in Source or Object form.

3. Grant of Patent License.

Subject to the terms and conditions of this License, each Contributor hereby grants to You a perpetual, worldwide, non-exclusive, no-charge, royalty-free, irrevocable (except as stated in this section) patent license to make, have made, use, offer to sell, sell, import, and otherwise transfer the Work, where such license applies only to those patent claims licensable by such Contributor that are necessarily infringed by their Contribution(s) alone or by combination of their Contribution(s) with the Work to which such Contribution(s) was submitted. If You institute patent litigation against any entity (including a cross-claim or counterclaim in a lawsuit) alleging that the Work or a Contribution incorporated within the Work constitutes direct or contributory patent infringement, then any patent licenses granted to You under this License for that Work shall terminate as of the date such litigation is filed.

4. Redistribution.

You may reproduce and distribute copies of the Work or Derivative Works thereof in any medium, with or without modifications, and in Source or Object form, provided that You meet the following conditions:

You must give any other recipients of the Work or Derivative Works a copy of this License; and

You must cause any modified files to carry prominent notices stating that You changed the files; and

You must retain, in the Source form of any Derivative Works that You distribute, all copyright, patent, trademark, and attribution notices from the Source form of the Work, excluding those notices that do not pertain to any part of the Derivative Works; and

If the Work includes a "NOTICE" text file as part of its distribution, then any Derivative Works that You distribute must include a readable copy of the attribution notices contained within such NOTICE file, excluding those notices that do not pertain to any part of the Derivative Works, in at least one of the following places: within a NOTICE text

file distributed as part of the Derivative Works; within the Source form or documentation, if provided along with the Derivative Works; or, within a display generated by the Derivative Works, if and wherever such third-party notices normally appear. The contents of the NOTICE file are for informational purposes only and do not modify the License. You may add Your own attribution notices within Derivative Works that You distribute, alongside or as an addendum to the NOTICE text from the Work, provided that such additional attribution notices cannot be construed as modifying the License.

You may add Your own copyright statement to Your modifications and may provide additional or different license terms and conditions for use, reproduction, or distribution of Your modifications, or for any such Derivative Works as a whole, provided Your use, reproduction, and distribution of the Work otherwise complies with the conditions stated in this License.

5. Submission of Contributions.

Unless You explicitly state otherwise, any Contribution intentionally submitted for inclusion in the Work by You to the Licensor shall be under the terms and conditions of this License, without any additional terms or conditions. Notwithstanding the above, nothing herein shall supersede or modify the terms of any separate license agreement you may have executed with Licensor regarding such Contributions.

6. Trademarks.

This License does not grant permission to use the trade names, trademarks, service marks, or product names of the Licensor, except as required for reasonable and customary use in describing the origin of the Work and reproducing the content of the NOTICE file.

7. Disclaimer of Warranty.

Unless required by applicable law or agreed to in writing, Licensor provides the Work (and each Contributor provides its Contributions) on an "AS IS" BASIS, WITHOUT WARRANTIES OR CONDITIONS OF ANY KIND, either express or implied, including, without limitation, any warranties or conditions of TITLE, NON-INFRINGEMENT, MERCHANTABILITY, or FITNESS FOR A PARTICULAR PURPOSE. You are solely responsible for determining the appropriateness of using or redistributing the Work and assume any risks associated with Your exercise of permissions under this License.

8. Limitation of Liability.

In no event and under no legal theory, whether in tort (including negligence), contract, or otherwise, unless required by applicable law (such as deliberate and grossly negligent acts) or agreed to in writing, shall any Contributor be liable to You for damages, including any direct, indirect, special, incidental, or consequential damages of any character arising as a result of this License or out of the use or inability to use the Work (including but not limited to damages for loss of goodwill, work stoppage, computer failure or malfunction, or any and all other commercial damages or losses), even if such Contributor has been advised of the possibility of such damages.

9. Accepting Warranty or Additional Liability.

While redistributing the Work or Derivative Works thereof, You may choose to offer, and charge a fee for, acceptance of support, warranty, indemnity, or other liability obligations and/or rights consistent with this License. However, in accepting such obligations, You may act only on Your own behalf and on Your sole responsibility, not on behalf of any other Contributor, and only if You agree to indemnify, defend, and hold each Contributor harmless for any liability incurred by, or claims asserted against, such Contributor by reason of your accepting any such warranty or additional liability.

END OF TERMS AND CONDITIONS

BSD

BSD 3-Clause License

/*_

- * Redistribution and use in source and binary forms, with or without
- * modification, are permitted provided that the following conditions
- * are met:

- * 1. Redistributions of source code must retain the above copyright notice, this list of conditions and the following disclaimer.
- * 2. Redistributions in binary form must reproduce the above copyright notice, this list of conditions and the following disclaimer in the documentation and/or other materials provided with the distribution.
- * 3. Neither the name of the author nor the names of its contributors may be used to endorse or promote products derived from this software
- * THIS SOFTWARE IS PROVIDED BY THE AUTHOR AND CONTRIBUTORS "AS IS" AND ANY EXPRESS OR IMPLIED WARRANTIES, INCLUDING, BUT NOT LIMITED TO, THE IMPLIED WARRANTIES OF MERCHANTABILITY AND FITNESS FOR A PARTICULAR PURPOSE ARE DISCLAIMED. IN NO EVENT SHALL THE AUTHOR OR CONTRIBUTORS BE LIABLE FOR ANY DIRECT, INDIRECT, INCIDENTAL, SPECIAL, EXEMPLARY, OR CONSEQUENTIAL DAMAGES (INCLUDING, BUT NOT LIMITED TO, PROCUREMENT OF SUBSTITUTE GOODS OR SERVICES; LOSS OF USE, DATA, OR PROFITS; OR BUSINESS INTERRUPTION) HOWEVER CAUSED AND ON ANY THEORY OF LIABILITY, WHETHER IN CONTRACT, STRICT LIABILITY, OR TORT (INCLUDING NEGLIGENCE OR OTHERWISE) ARISING IN ANY WAY OUT OF THE USE OF THIS SOFTWARE, EVEN IF ADVISED OF THE POSSIBILITY OF SUCH DAMAGE.

B *Contact Information*

Printronix Auto ID Customer Support Center

IMPORTANT Please have the following information available prior to calling the Printronix Customer Support Center:

- Model number
- Serial number (located on the back of the printer)
- Installed options (i.e., interface and host type if applicable to the problem)
- Configuration printout: Refer to the *Administrator's Manual*.
- Is the problem with a new install or an existing printer?
- Description of the problem (be specific)
- Good and bad pictures that clearly show the problem (faxing or emailing of these pictures may be required)

| | |
|--|--|
| Americas | (844) 307-7120 Service@PrintronixAutoID.com |
| Europe, Middle East, and Africa | +31 (0) 24 3030 340 EMEA_support@PrintronixAutoID.com |
| Asia Pacific | +886 3 990 6155 APAC_support@PrintronixAutoID.com |
| China | +86 755 2398 0479 CHINA_support@PrintronixAutoID.com |

Corporate Offices

Printronix Auto ID

3040 Saturn Street, Suite
200, Brea, CA 92821
U.S.A.

Phone: (844) 307-7120

Fax: (657) 258-0817

Printronix Auto ID, EMEA Head Office

Georg-Wimmer-Ring
8b D-85604 Zorneding, Germany

Phone: +49 (0) 8106 37979-000

Email: EMEA_Sales@PrintronixAutoID.com

Printronix Auto ID, Asia Pacific Head Office

Taiwan
9F, No. 95, Minquan Rd.
Xindian Dist., New Taipei City
231 Taiwan (R.O.C)

Phone: +886 3 990 6155

Fax: +886 3 990 6215

Printronix Auto ID, China Head Office

Shenzhen
New World Center 2510 room
No. 6009, Yitian road
Futian District, Shenzhen
518000
China

Phone: +86 755 2398 0479

Fax: +86 755 2398 0773

Visit our company's web site at <https://usca.tscprinters.com/en>