



## The economical, entry-level cart that slashes wasted motion and pays for itself in no time



The entry-level EcoCart mobile powered workstation is designed to provide true mobility within a facility, while eliminating unnecessary movement, touches and transportation wastes. This can result in improved dock to stock cycle times in receiving and on-time shipments in your shipping areas.

This lightweight, compact unit is ideal for powering a laptop, barcode printer and scanner for 8+ hours at time.

## Outstanding benefits

- › Reduce labor by as much as \$10K per worker
- › Increase receipts by as much as 60%
- › Reduce improperly labeled products
- › Reduce inaccurate inventories
- › Process goods directly at the pallet or on the dock
- › See your ROI in less than three months

Click here for more information!



**INTEGRATED  
PRODUCTIVITY  
SYSTEMS**

(844) 477-4911 | [www.ipsiscan.com](http://www.ipsiscan.com)

LEARN MORE AT  
[NEWCASTLESYS.COM/ECOCART](http://NEWCASTLESYS.COM/ECOCART)

Rev. 6/25



**THE HUMAN ELEMENT  
OF AUTOMATION™**

# Newcastle EC Series Powered Industrial Carts



EC Series with PowerSwap Nucleus® MINI power system (includes stand-alone charging station)



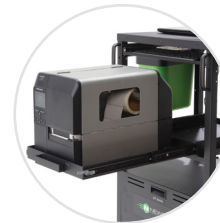
Enclose the EC Series cart with optional set of metal side panels (B434) and metal rear panel (B435) or metal pegboard panel (B433)



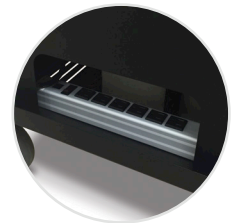
Simply swap with a fully charged pack in seconds



Easily integrate a wide variety of accessories



Optional slide-out printer tray



Easy-access power strip (for SLA & fixed lithium versions)

Height Adjustable:
Shelf:
Capacity:
Casters:
Color & Construction:
Model Configurations:
Typical Devices Powered for 8 Hour Shift:
Battery Type:
Continuous Output Power (W):
Surge Power:
Battery Bank (Wh):
Charge Time (Hrs):
Operating Temp (F):
Weight:
Dimensions:

Middle shelf adjustable from 20-32" (508-813 mm)			
(1 standard top shelf) 21.75" wide x 20" deep metal (552 x 508 mm) (optional middle shelf) 20" wide x 20" deep metal (508 x 508 mm)			
60 lbs (27 kg) per shelf evenly distributed			
5 x 2" (127 x 51 mm) rubber wheels, front fixed, rear locking swivel			
Black powder coat & steel			
EC102NU2M	EC350	EC380	EC380-LI
Laptop or small thermal printer & scanner	Laptop/thin client, small thermal printer & scanner	Laptop/thin client, LCD, small or mid-range thermal printer & scanner	
Swappable Lithium Iron Phosphate	Sealed Lead Acid		Fixed Lithium Iron Phosphate
120	450	450	450
300	900	900	900
230	480	1200	1280
2.5	4	9	9
50-104°	32-95°		50-95°
65.5 lbs (30 kg)	110 lbs. (50 kg)	136 lbs. (62 kg)	90 lbs. (41 kg)
20" long x 21.75" wide x 43" high (508 x 552 x 1092 mm)			



LEARN MORE AT  
[NEWCASTLESYS.COM/ECOCART](http://NEWCASTLESYS.COM/ECOCART)



THE HUMAN ELEMENT  
OF AUTOMATION™